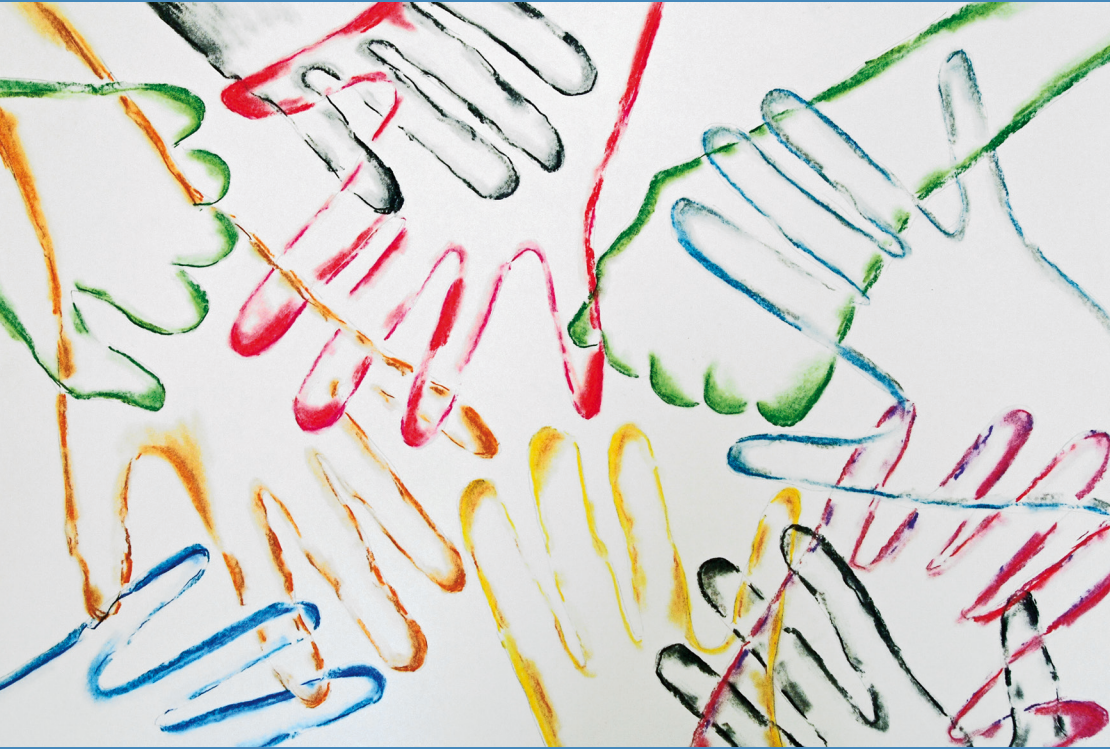


17th EPA Section Meeting 2014

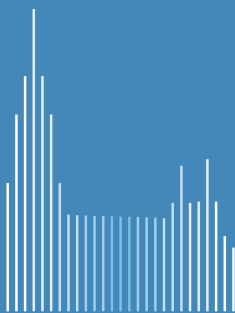
Epidemiology and Social Psychiatry
Disease Burden and Service Delivery



PROGRAM

Ulm | Germany

May 21–24 | 2014



17th EPA
Ulm/Neu-Ulm
May 21–24, 2014

Section Meeting
Epidemiology and Social Psychiatry
Disease Burden and Service Delivery



ulm university universität
uulm

DFG Deutsche
Forschungsgemeinschaft

bezirkskliniken
schwaben

Preface

Dear friends and colleagues,

It is a pleasure to welcome you to the 17th meeting of the Section of Epidemiology and Social Psychiatry of the European Psychiatric Association (EPA). Following the meetings at Bergen and Maastricht it is an honour for us to host this conference.

On the following pages you will find the final program. Please kindly note our participant information (page 8 ff) which gives you directions, information for presenters and details of the social program.

The program comprises of 242 scientific contributions from over 30 countries, and we are grateful to all presenters, to our distinguished keynote speakers and to colleagues who agreed to chair a session for their active contributions to our conference.

The conference starts with pre-conference courses and a young researcher symposium on Wednesday. During the following two-and-a-half days a large number of scientific contributions will focus on a wide range of topics related to the overall conference theme of "Disease Burden and Service Delivery". Sessions will cover topics such as challenges of psychiatry for the elderly, work environment and mental health, the individual and societal burden of mental disorders, family mental health and community care interventions. There will be lectures on user-led research in mental health care practice and service quality and service effectiveness. A revised classification for mental disorders in general medical settings – the ICD11-PHC will be discussed in the closing lecture. Overall, the scientific program consists of 26 symposia, 16 oral presentation sessions and 40 posters. Among other things, you will find a USB stick containing the book of abstracts in your conference bag.

We are very pleased to welcome all participants to the welcome reception at the conference venue (on Thursday evening) and to the conference gala dinner at the Stadthaus Ulm on Friday.

Finally, it is important to say that we are very lucky to have been part of an outstanding conference organising team. We are especially grateful to Jana Konrad who, supported by Bianca Reitenauer and Suzanne Cosh, did a wonderful job managing the conference office, to Tanja Kohler and Gaby Vierling at Hapag-Lloyd Ulm for the exceptional organizational support, to Sven Schneider for programming the online submission tool and to the entire staff of Ulm University's Department of Psychiatry II for their great support at the Edwin-Scharff-Haus. We thank Ulm University Medical Faculty, the Bezirkskliniken Schwaben, our hospital trust and the Deutsche Forschungsgemeinschaft (DFG) for their generous support of this conference. Finally, we want to thank Nadja Zentner and Bernd Puschner for their support: we were able to benefit a lot from their excellent preparation of the IXth ENMESH International Conference 2011 in Ulm.

We look forward to the scientific exchange and debate in the course of the 17th meeting of the EPA Section of Epidemiology and Social Psychiatry, and we wish all participants an enjoyable and stimulating stay in Ulm.



Thomas Becker
(Local host)



Markus Kösters
(Scientific Coordinator)

Department of Psychiatry II, Ulm University, Germany

Contents

Preface.....	2
Committees and acknowledgements	5
Venue.....	7
Participant Information	8
For Presenters	10
Poster Session starting points	12
Social Program	14
Program at a glance.....	15
Wednesday, May 21 st	21
Thursday, May 22 nd	23
Friday, May 23 rd	40
Saturday, May 24 th	61
Program changes.....	70
Index of names	71

Committees and acknowledgements

Conference Scientific Committee

- Prof Thomas Becker – Ulm University, Germany (local host)
- Dr Markus Kösters – Ulm University, Germany

Local Organising Committee at Ulm University's Department of Psychiatry II

- Thomas Becker
- Markus Kösters
- Jana Konrad
- Bianca Reitenauer
- Suzanne Cosh
- Eileen Mohr
- Lisa Goldbach
- Hudson Kiige

Poster Prize Committee

- Thomas Becker
- Francesca Girlanda
- Martin Preisig

Thanks

The 17th meeting of the EPA Epidemiology and Social Psychiatry section would not have been possible without the many helpers supporting us. We would like to extend a sincere thank you to everyone who has provided tremendous support leading up to this meeting:

- Tanja Kohler and Gaby Vierling at Hapag-Lloyd Ulm for the exceptional organizational support.
- Nadja Zentner for building and running the conference website.
- Beate Dillinger for supporting the administration.
- Lea Bouche, Carmen Checchia, Francesca Girlanda, Carolin von Gottberg, Ann-Christien Holtrup, Nadine Koslowski, Susanne Kraft, Lena Staudigl, Annabel Stierlin, Maja Stiawa, and all student assistants for their great help with the preparation and at the Edwin Scharff Haus.
- Sven Schneider for programming the online submission tool
- Elisabeth Reichhardt (Artist) and Mr Wohlwend (Arttherapist at Günzburg psychiatric hospital) for the great cover picture
- Johannes Friedrich for designing the conference logo
- Ruth Rösch for the layout of the book of abstracts
- Ulm University Medical Faculty, the Bezirkskliniken Schwaben, our hospital trust for their support of the conference
- Deutsche Forschungsgemeinschaft for the financial support of this meeting
- Nadja Zentner and Bernd Puschner for organizing the IXth ENMESH International Conference 2011 in Ulm. Their excellent preparation and documentation of the ENMESH conference made our lives much easier - most documents are based on their work.

With our greatest the appreciation,
The Local Organising Committee

Venue

Conference Sessions

Edwin-Scharff-Haus
Silcherstraße 40
D-89312 Neu-Ulm, Germany
<http://www.esh.neu-ulm.de>

Gala Dinner

Stadthaus Ulm
Münsterplatz 50
D-89073 Ulm, Germany
<http://www.stadthaus.ulm.de>

Internet Access

Free WiFi is available for all participants at the conference venue.

Network (Netzwerk):	ESHNU
User (Benutzer):	epa2014
Password (Passwort):	nu

Participant Information

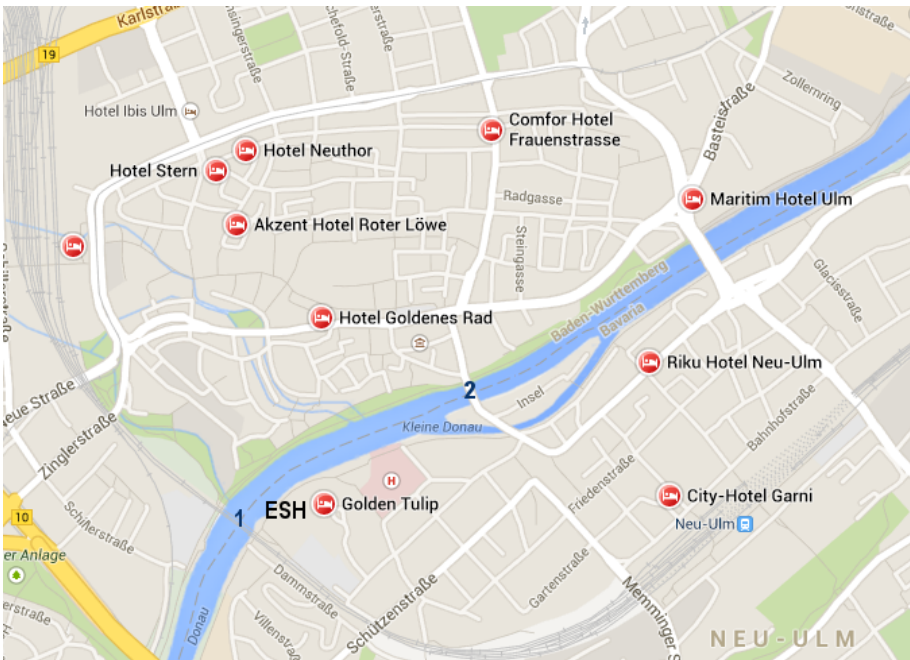
Getting to the Edwin-Scharff-Haus

Walk: Around 15 min. from Ulm Münsterplatz (square in front of the Minster /Cathedral) or Hauptbahnhof (main train station). Cross the Danube using the walkway on the “Eisenbahnbrücke” (Railway Bridge, 1) or “Herdrücke” (2).

Bus: Line 7. Stops include Willy-Brandt-Platz (near Comfor Hotel) and Hauptbahnhof (InterCityHotel); get off at stop “Amtsgericht”.

Car: Parking lot right at the Edwin-Scharff-Haus (Day tickets 8 €).

Taxi: +49-731-66066.



ESH: Edwin-Scharff-Haus (Conference venue);

1: “Eisenbahnbrücke”; 2: “Herdrücke”

Getting to the Stadthaus Ulm (Gala-Dinner, City Centre)

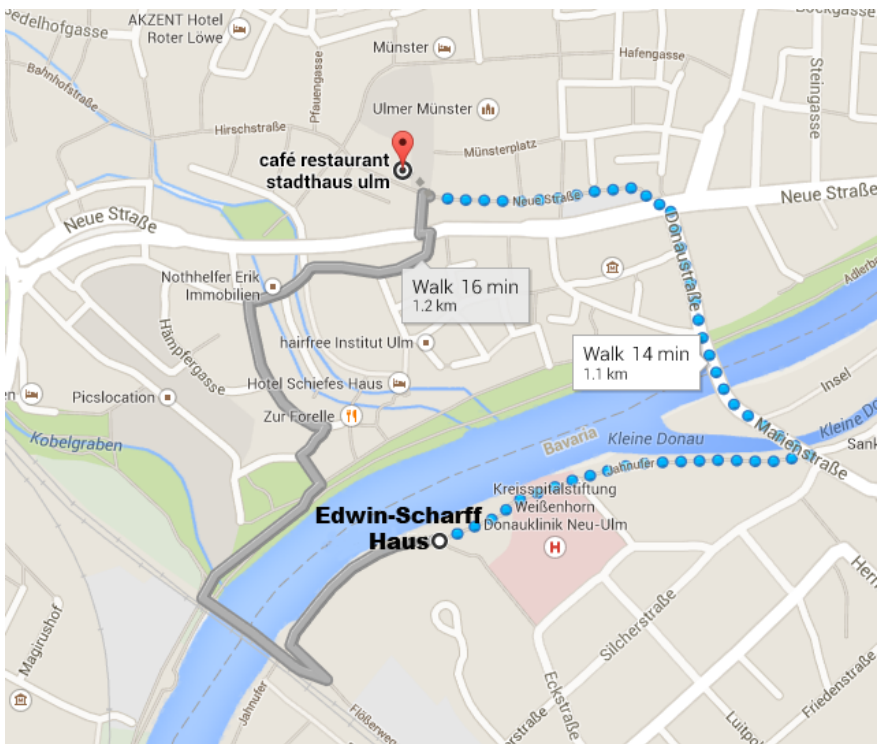
The Stadthaus Ulm is located at Ulm cathedral square in the city centre, so simply walk towards the minster spire.

From the Edwin-Scharff-Haus

Walks (about 15 minutes):

1. Take the walkway (Jahnufer) along the Danube.
2. Turn left onto Marienstraße. From here a bridge overlooking the Danube River should be visible.
3. Continue from Marienstraße onto Donaustraße for around 200 metres.
4. Cross at the pedestrian crossing and turn left onto Neue Straße.
5. After a few metres, turn slightly right to stay onto Neue Straße, which from here leads to the Stadthaus Ulm after approx. 200 metres.

Alternatively, (grey), cross the Danube at “Eisenbahnbrücke” and turn right on the walkway along the Danube. On the walk towards the cathedral spire you will pass through the historic Fishermen’s Quarter



For Presenters

Symposia

Symposia will be 90 minutes, including a minimum of 15 minutes for open discussion. It is essential that presenters leave ample time for discussion of their work with members in the audience. You will have a **15-minute** time slot for your presentation.

Where a symposium has a prepared discussant, authors should send him or her their presentations well in advance of the conference.

Oral Presentation Sessions

Oral Presentation Sessions will last 90 minutes and consist of five to six presentations, with at least 5 minutes for discussion allotted to each. You will have **10 minutes** for your presentation.

Audio-Visual Equipment

At least 15 minutes before the start of your session, please bring to your lecture room a copy of your presentation on a CD-ROM or USB media storage device. Conference organizers will load all presentations onto conference computers.

Lecture rooms will be equipped with a PC computer and a data show for PowerPoint, Word, Excel or Acrobat Files. There will also be a microphone and a standing lectern. No VCR, overhead projector or carousel slide projector will be provided. Macintosh computers will not be available. It will not be possible to use your own computer.

Please prepare your presentation in a single PowerPoint, Word, Excel or Acrobat file to run on an IBM compatible computer with Microsoft Office

Posters

There will be 5 guided poster sessions with about 8 posters in each. Each session will be moderated by two chairs; the chairs will guide the group from poster to poster and ask for a brief presentation from the author (who should be standing by his or her poster). Each session will end with a brief discussion. Please keep in mind that many attendees will appreciate receiving a hand-out that summarizes your research findings.

Poster prizes will be awarded to the three best posters at the Closing session. Posters will be judged by the Poster Prize Committee in collaboration with the session chairs on the following criteria: scientific quality, poster presentation, and quality of the brief oral presentation.

Poster dimensions must be **DIN A0 portrait format** (84.1 x 118.9 cm = 33.1 x 46.8 inches). We will provide a freestanding display frame on which you can mount and display your poster. The display frame will have your poster number on it..

Please put up your poster as early as possible upon arrival at the conference and do not remove it before the end of the conference (Saturday 2:00 p.m.) in order to give as much time as possible for attendees to view the posters outside the poster sessions. **Please do not remove your poster before Friday, May, 23, 5 p.m.** so that the members of Poster Prize Committee can complete their work.

Poster Session starting points

Guided Poster Session (Friday, May 23rd, 11:00- 12:30 pm)

P01 Child and adolescent mental health	<i>Louise Howard Ian Colman</i>	P01- 1	The impact of perinatal depression... Hamid Boztas
P02 Mental health across the lifespan	<i>Mary Ganguli Steffi G. Riedel-Heller</i>	P02- 1	Nationwide increasing incidence and diagnostic... Christina Blanner
P03 Treatment modalities and outcome	<i>Bernd Puschner Sonia Johnson</i>	P03- 1	Can the circle of intensive use of and drop-outs... Maja Biala
P04 Caregiving, social integration and stigma	<i>Matthew Hotopf Georg Schomerus</i>	P04- 1	Suicide completion in patients with... Andrea Fernandes
P05 Physical health and mental illness	<i>Martin Preisig Reinhold Kilian</i>	P05- 1	Incidence of Cancer among People with... Chin-Kuo Chang

Continuous Medical Education (CME) points

The conference is accredited by the Bavarian Medical Association (“Bayerische Landesärztekammer”, BLÄK). 6 Continuous Medical Education points (“Fortbildungspunkte”) will be awarded for each day of the conference.

CME certificates will be handed out to conference participants next to the registration desk in the late afternoon on Thursday and Friday, and around noon on Saturday. Exact times will be announced at the information desk.

Social Program

Welcome Reception

The welcome reception on Thursday, May 22nd will start at 7 pm at the Edwin-Scharff Haus and will include fingerfood and drinks. Papirossa, a three-man band, will entertain you with live salon music.



Guided Ulm tour

Following the welcome reception we offer guided city tours in English. During the tour you will discover historical and contemporary facts about Ulm and Neu Ulm and stroll through the romantic Fishermen's Quarter. Your guides will meet you at the registration desk at the Edwin-Scharff-Haus at 8:30 pm; the tour will last about 1½ hours.



Gala Dinner

Join us on Friday, May 23rd at the Stadthaus Ulm for the conference Gala dinner. The dinner starts at 7:30 pm. The cost of 60 € includes food and drinks (beer, wine & soft drinks). Tobi van Deisner, one of the best balloon artists in Europe, will entertain you during the dinner with a short show. DJ Guido will provide the gala's musical entertainment. Feel free to dance!

Please remember to bring along your dinner tickets!



Program at a glance

Chairs, Speakers; PC: Preconference course; OL: Opening lecture; K: Keynote lecture; S: Symposium; OP: Oral presentation session; CL: Closing lecture

Wednesday, May 21 st			
	Garderobenfoyer	Studio Stuttgart	Studio München
14:00 - 18:00	Registration (Foyer, Ground Floor)		
14:00 - 15:30	<p><i>PC 01</i> Writing, publishing, reviewing and reading a clinical scientific paper Christoph Lauber, Switzerland; Povl Munk-Jørgensen, Denmark</p>	<p><i>PC 02</i> Qualitative methods in mental health service research. An introduction. Silvia Krumm, Germany</p>	<p><i>PC 03</i> Methods of cost-assessment and economic evaluation in mental health care Reinhold Kilian, Germany; A-La Park, UK; Hans Joachim Salize, Germany</p>
15:30 - 16:00	Coffee break		
16:00 - 17:30	<p><i>PC 01</i> Writing, publishing, reviewing and reading a clinical scientific paper Christoph Lauber, Switzerland; Povl Munk-Jørgensen, Denmark</p>	<p><i>PC 02</i> Qualitative methods in mental health service research. An introduction. Silvia Krumm, Germany</p>	<p><i>PC 03</i> Methods of cost-assessment and economic evaluation in mental health care Reinhold Kilian, Germany; A-La Park, UK; Hans Joachim Salize, Germany</p>
17:30 - 18:00	Coffee break		
18:00 - 19:30	<p><i>Young researcher symposium:</i> How can medical students be an asset in psychiatric research? Christina Blanner, Denmark; Jesper Nørgaard Kjær, Denmark</p>		

Thursday, May 22 nd , morning						
	Großer Saal	Kleiner Saal	Garderobenfoyer	Studio Stuttgart	Studio München	Konferenzraum
08:00 - 19:00	Registration (Foyer, Ground Floor)					
08:30 - 09:15	<p><i>Opening session Thomas Becker, Germany; Povl Munk-Jørgensen, Denmark</i></p> <p>Welcome address Thomas Wirth, Thomas Becker, Wolfgang Gaebel; Germany</p> <p>OL EPA Guidance and the future of European psychiatry Wolfgang Gaebel, Germany</p>					
09:15 – 10:30	<p><i>Keynote lectures 1 Thomas Becker, Germany; Povl Munk-Jørgensen, Denmark</i></p> <p>K01 Challenges for epidemiology and social psychiatry Norman Sartorius, Switzerland</p> <p>K02 The future of academic psychiatry may be social Stefan Priebe, UK</p> <p>K03 The individual and societal burden of mental disorders: consequences for a public health research agenda Hans-Ulrich Wittchen, Germany</p>					
10:30 - 11:00	Coffee break					
11:00 - 12:30	<p>S01 Mental health in old age Ingmar Skoog, Sweden; Steffi G. Riedel-Heller, Germany</p>	<p>S02 Does coercion work? The Oxford Community Treatment Order Evaluation Trial (OCTET) Jorun Rugkåsa, Norway</p>	<p>S03 TürkSch: A longitudinal epidemiological study for gene-environment interaction in psychosis and other mental disorders Köksal Alptekin, Turkey</p>	<p>S04 Models of case management for psychiatric disorders in the Swiss context Stéphane Morandi, Switzerland; Thomas Becker, Germany (Discussant)</p>	<p>OP01 Primary and community care Dirk Richter, Switzerland; Hans Joachim Salize, Germany</p>	<p>S05 The risk of PTSD and other mental disorders after trauma Hans-Ulrich Wittchen, Germany</p>
12:30 - 13:30	Lunch					

Thursday, May 22nd, afternoon

	Großer Saal	Kleiner Saal	Garderobenfoyer	Studio Stuttgart	Studio München	Konferenzraum
13:30 - 14:30	<p><i>Keynote lectures 2 Tom Burns, UK; Martin Preisig, Switzerland</i></p> <p><i>K04 Work environments and mental health: from observation to intervention</i> Stephen A. Stansfeld, UK</p> <p><i>K05 How do epidemiology and health services research interact</i> Mirella Ruggeri, Italy</p>					
14:30 - 16:00	<p>S06 The epidemiology of psychosis: new evidence on environmental risk factors and mechanisms Craig Morgan, UK</p>	<p>S07 Mental illness stigma - new findings from individual and cultural perspectives Georg Schomerus, Germany</p>	<p>S08 Health economic evaluation of psychiatric outpatient care: Methodological problems and recent developments Reinhold Kilian, Germany</p>	<p>S09 Subtyping of common mental disorders: results from ZInEP and PsyCoLaus Vladeta Ajdacic-Gross, Switzerland</p>	<p>OP02 Coercion, prison and forensic care Tilman Steinert, Germany; Ronny Bruffaerts, Belgium</p>	<p>S10 Trauma and post-traumatic stress disorder Matthew Hotopf, UK; Nicola Fear, UK (Discussant)</p>
16:00 - 16:30	Coffee break					
16:30 - 18:00	<p>S11 Mental health services and parenthood: resources and challenges Louise Howard, UK; Silvia Krumm (Discussant)</p>	<p>S12 Mental disorders in the German Health Interview and Examination Survey for Adults (DEGS1-MH): Disease burden and service use. Frank Jacobi, Germany</p>	<p>S13 Understanding Social Determinants at Multiple Levels and Mental Disorder in Community Populations Matthew Hotopf, UK; Stephani Hatch, UK (Discussant)</p>	<p>OP03 Psychotropic drug treatment Linda Magnusson Hanson, Sweden; Markus Kösters, Germany</p>	<p>OP04 Prevalence of mental disorders Arnstein Mykletun, Norway; Piotrowski, Poland</p>	
18:00 - 19:00	<p><i>Keynote lectures 3 Ingmar Skoog, Sweden; Robert Stewart, UK</i></p> <p><i>K06 Dementia and mild cognitive impairment – a challenge for aging societies – occurrence, risk factors and consequences</i> Steffi G. Riedel-Heller, Germany</p> <p><i>K07 Epidemiological needs assessment for dementia: evidence and gaps</i> Carol Brayne, UK</p>					
19:00 - 20:30	Welcome reception at the Foyer, First Floor					
20:30	Guided Ulm tour (1 ½ hours)					

Friday, May 23 rd , morning						
	Großer Saal	Kleiner Saal	Garderobenfoyer	Studio Stuttgart	Studio München	Konferenzraum
08:00 - 18:00	Registration (Foyer, Ground Floor)					
08:30 - 09:00	<i>Keynote lectures 4 Stephen Stansfeld, UK; Arnstein Mykletun, Norway</i> <i>K08 Mild cognitive impairment: The importance of definitions.</i> <i>Mary Ganguli, USA</i>					
09:00 - 09:30	Coffee break					
09:30 - 11:00	<i>S14</i> Coercion in mental health services in Europe: experiences of involuntary admissions, community treatment orders and informal coercion <i>Brian O'Donoghue, Australia</i>	<i>S15</i> Mental health at work is an increasing concern in Europe. What is the current knowledge on factors important for sustainable work participation? <i>Gunnel Hensing, Sweden</i>	<i>S16</i> Using natural language processing to enhance the Psychiatric Case Register <i>Robert Stewart, UK; Angus Roberts (Discussant)</i>	<i>OP05</i> Severe mental illness <i>Margareta Östman, Sweden; Dietrich Rothenbacher, Germany</i>	<i>OP06</i> Suicide <i>Vesna Jordanova, UK; Anthony Mann, UK</i>	<i>OP07</i> Addiction and substance use <i>Fernando Wagner, USA; Arnstein Mykletun, Norway</i>
11:00 - 12:30	Poster Session in the Foyer					
12:30 - 13:30	Lunch					

Friday, May 23rd, afternoon

	Großer Saal	Kleiner Saal	Garderobenfoyer	Studio Stuttgart	Studio München	Konferenzraum
13:30 - 15:00	<p>S17 Women's mental health: new findings and new methodologies <i>Louise Howard, UK</i></p>	<p>S18 Clinical decision making in the treatment of people with severe mental illness: European multicentre study <i>Bernd Puschner, Germany; Margareta Östman, Sweden (Discussant)</i></p>	<p>OP08 Psychosocial Interventions <i>Jo Phelan, USA, Nicolas Rüsçh, Germany</i></p>	<p>OP09 Depression and anxiety <i>Martin Härter, Germany; Steffi G. Riedel-Heller, Germany</i></p>	<p>OP10 Mental health service provision <i>Thomas Becker, Germany; Carolin von Gottberg, Germany</i></p>	
15:00 - 15:30	Coffee break					
15:30 - 17:00	<p>S19 Measuring social functioning in severe mental illness- recent developments and future directions <i>Andrew Molodynski, UK</i></p>	<p>S20 The impact of the economic crisis on psychiatric morbidity and mental health service delivery <i>Graça Cardoso, Portugal</i></p>	<p>OP11 Comorbidity <i>Anthony Mann, UK; Reinhold Kilian, Germany</i></p>	<p>OP12 Old age mental health <i>Holger Schulz, Germany; Herbert Matschinger, Germany</i></p>	<p>S21 The course of mood and anxiety disorders: Results from population-based and clinical Studies <i>Christine Kuehner, Germany; Martin Preisig, Switzerland (Discussant)</i></p>	
17:00 - 18:00	<p><i>Keynote lectures 5 Jan Spijker, Netherlands; Siegfried Weyerer, Germany</i></p> <p>K09 Pregnancy Outcome in women with psychosis <i>Louise Howard, UK</i></p> <p>K10 Crisis care in England: evidence and implementation <i>Sonia Johnson, UK</i></p>					
19:30 - 24:00	Gala Dinner at Stadthaus Ulm					

Saturday, May 24 th					
	Großer Saal	Kleiner Saal	Garderobenfoyer	Studio Stuttgart	Studio München
08:00 - 13:00	Registration (Foyer, Ground Floor)				
08:30 - 09:30	<p><i>Keynote lectures 6 Sir David Goldberg, UK; Bernd Puschner, Germany</i></p> <p>K11 User-led research and mental health care practice Diana Rose, UK</p> <p>K12 Quality and effectiveness of services for people with complex mental health needs Helen Killaspy, UK</p>				
09:30 - 11:00	<p>S22 Assuring and benchmarking the quality of mental health services Anke Bramesfeld, Germany; Helen Killaspy, UK (Discussant)</p>	<p>S23 Use of Coercion in Mental Health Services in different European countries: Legislation, politics, data, developments Tilman Steinert, Germany</p>	<p>S24 Comorbidity and health service use Laura Goodwin, UK; Max Henderson (Discussant)</p>	<p>OP13 Poverty and mental health Tom Burns, UK; Markus Kösters, Germany</p>	<p>OP14 Child and adolescent mental health Neil Smith, UK; Suzanne Cosh, Germany</p>
11:00 - 11:30	Coffee break				
11:30 - 13:00	<p>S25 Mental health care provision for adults with mild or moderate intellectual disabilities and a comorbid psychiatric disorder. The MEMENTA-Study Matthias Schützwohl, Germany; Margareta Östman (Discussant)</p>	<p>S26 A integrated urban model of social inclusion involving rehabilitation assertive outreach services and community social networks for individuals with enduring mental health problems in Ireland Ena Lavelle, Ireland</p>	<p>OP15 Workplace and mental health Harald Gündel, Germany; Peter Butterworth, Australia</p>	<p>OP16 Gender, family and caregiving Birgit Reime, Germany; Sabine Loos, Germany</p>	
13:00 - 14:00	<p><i>Closing Session and Lecture</i> Thomas Becker, Germany; Markus Kösters, Germany</p> <p>CL A revised classification for mental disorders in general medical settings – the ICD11-PHC Sir David Goldberg, UK</p> <p>Poster prizes and closing remarks Thomas Becker, Germany; Rob Stewart, UK</p>				
14:00 - 15:00	Lunch				

Wednesday, May 21st

Numbers correspond to those in the book of abstracts

Wednesday
14:00 - 18:00
Foyer, Ground
Floor

Registration

Wednesday
14:00 - 15:30
Garderobenfoyer

PC01

Writing, publishing, reviewing and reading a clinical scientific paper
[Christoph Lauber](#), [Services psychiatriques, Bellelay, Switzerland](#); [Povl Munk-Jørgensen](#), [Aarhus University Hospital, Risskov, Denmark](#)

Wednesday
14:00 - 15:30
Studio Stuttgart

PC02

Qualitative methods in mental health service research. An introduction.
[Silvia Krumm](#), [Ulm University, Germany](#)

Wednesday
14:00 - 15:30
Studio München

PC03

Methods of cost-assessment and economic evaluation in mental health care
[Reinhold Kilian](#), [Ulm University, Germany](#); [A-La Park](#), [London School of Economics, UK](#); [Hans Joachim Salize](#), [Heidelberg University, Mannheim, Germany](#)

Wednesday
15:30 - 16:00
Foyer, First Floor

Coffee Break

Wednesday
16:00 - 17:30
Garderobenfoyer

PC01

Writing, publishing, reviewing and reading a clinical scientific paper
[Christoph Lauber](#), [Services psychiatriques, Bellelay, Switzerland](#); [Povl Munk-Jørgensen](#), [Aarhus University Hospital, Risskov, Denmark](#)

Wednesday
16:00 - 17:30
Studio Stuttgart

PC02

Qualitative methods in mental health service research. An introduction.
[Silvia Krumm](#), [Ulm University, Germany](#)

Wednesday
16:00 - 17:30
Studio München

PC03

Methods of cost-assessment and economic evaluation
in mental health care
[Reinhold Kilian, Ulm University, Germany](#); [A-La Park, London School of Economics, UK](#); [Hans Joachim Salize Heidelberg University, Mannheim, Germany](#)

Wednesday
17:30 - 18:00
Foyer, First Floor

Coffee Break

Wednesday
18:00 - 19:30
Garderobenfoyer

Young Researcher Symposium

How can medical students be an asset in psychiatric
research?
[Christina Blanner, Aarhus University Hospital, Risskov, Denmark](#); [Jesper Nørgaard Kjær, Aarhus University Hospital, Risskov, Denmark](#)

Thursday, May 22nd

Numbers correspond to those in the book of abstracts

Thursday
08:00 - 08:30
Foyer, Ground
Floor

Registration and Coffee

Thursday
08:30 - 10:30
Großer Saal

Opening Session

Thomas Becker - Department of Psychiatry II, Ulm University, Germany;
Povl Munk-Jørgensen - Aarhus University Hospital, Risskov, Denmark

Welcome address from the Dean of Ulm University's Medical Faculty

Thomas Wirth, Germany

Welcome address from the local host

Thomas Becker, Germany

Welcome address from the President Elect of the EPA

Wolfgang Gaebel, Germany

OL EPA Guidance and the future of European Psychiatry

Wolfgang Gaebel - Heinrich Heine University Düsseldorf, Germany

Keynote lectures 1

Thomas Becker - Department of Psychiatry II, Ulm University Germany;
Povl Munk-Jørgensen - Aarhus University Hospital, Risskov, Denmark

K01 Challenges for epidemiology and Social Psychiatry

Norman Sartorius - Association for the Improvement of Mental Health Programmes (AMH), Genf, Switzerland

K02 The future of academic psychiatry may be social

Stefan Priebe - Queen Mary University of London, UK

K03 The individual and society burden of mental disorders: consequences for a public health research agenda

Hans-Ulrich Wittchen - Dresden University of Technology, Germany

Thursday
10:30 - 11:00
Foyer, First Floor

Coffee Break

Thursday
11:00 - 12:30
Großer Saal

S01 Mental Health in Old Age
Ingmar Skoog - Academy of the University of Gothenburg, Sweden;
Steffi G. Riedel-Heller - University of Leipzig, Leipzig, Germany

S01-1 Epidemiology and Health Economics of Depressive Symptoms in Old Age – Results of the Leipzig Longitudinal Study of the Aged (LEILA 75+) and the German Study on Ageing, Cognition and Dementia in Primary Care Patients (AgeCoDe)
Melanie Luppá - Institute of Social Medicine, Occupational Health and Public Health, University of Leipzig, Germany
Claudia Sikorski, Steffi G. Riedel-Heller, Siegfried Weyerer Hans-Helmut König

S01-2 Early life factors and suicidal behavior: A prospective population-based study of women
Margda Waern - Neuropsychiatric Epidemiology Unit, University of Gothenburg, Sweden
Madeleine Mellqvist Fässberg, Erik Joas, Tore Hällström, Svante Östling, Mark Kaplan, Keith Hawton, Ingmar Skoog

S01-3 The relevance of specific phobia in old age
Robert Sigström - Department of Psychiatry and Neurochemistry, University of Gothenburg, Sweden
Ingmar Skoog, B. Karlsson, Margda Waern, Svante Östling

Thursday
11:00 - 12:30
Kleiner Saal

- S01-4 Apolipoprotein E epsilon 4 genotype and a physically active lifestyle in late life: Analysis of gene–environment interaction for the risk of dementia and Alzheimer’s disease dementia
[Tobias Luck - University of Leipzig, Institute of Social Medicine, Occupational Health and Public Health; LIFE - Leipzig Research Center for Civilization Diseases, Germany](#)
Steffi G. Riedel-Heller, Melanie Luppá, Birgit Wiese, Horst Bickel, Siegfried Weyerer, Martin Scherer, Wolfgang Maier
- S01-5 Salivary Cortisol Levels in Healthy and Depressed Older Persons
[Didi Rhebergen - Department of Psychiatry and the EMGO+ Institute for Health and Care Research, VU University Medical Center, Netherlands](#)
Nicole Korten, Max Stek, Roos Van der Mast, Richard Oude Voshaar, Brenda Penninx, Johannes (Jan) Smit, Hannie Comijs
- S01-6 Mid-life vascular risk factors and late-life hippocampal volume: the Southall and Brent revisited (SABRE) prospective study
[Gayan Perera - Institute of Psychiatry, Kings College London, UK](#)
Nish Chaturvedi, Dean Shibata, Therese Tillin, Clare Taylor, Robert Stewart
- S02 **Does coercion exist? The Oxford Community Treatment Order Evaluation Trial (OCTET)**
[Jorun Rugkåsa - Akershus University Hospital, Lørenskog, Norway](#)
- S02-1 Strengths and Weaknesses of the OCTET trial
[Tom Burns - Department of Psychiatry, University of Oxford, UK](#)
Jorun Rugkåsa, Andrew Molodynski, Ksenija Yeeles, Daniel Maughan, Maria Vazquez Montez
- S02-2 A Qualitative Study of Patient, Psychiatrist and Family Carer Experiences of Community Treatment Orders in England
[Jorun Rugkåsa - Health Services Research Unit, Akershus University Hospital, Norway](#)
Kryisia Canvin, Julia Sinclair, Tom Burns

Thursday
11:00 - 12:30
Garderobenfoyer

- S02-3 Is the duration of legal compulsion associated with differences in continuity of care?
[Stephen Puntis - Department of Psychiatry, University of Oxford, UK](#)
Jorun Rugkåsa, Tom Burns
- S02-4 Does coercion affect social outcomes for patients with psychosis?
[Francis Vergunst - Department of Psychiatry, University of Oxford, UK](#)
Jorun Rugkåsa, Tom Burns
- S03 **TürkSch: A Longitudinal Epidemiological Study for Gene-Environment Interaction in Psychosis and Other Mental Disorders**
[Köksal Alptekin - Dokuz Eylül University Medical School, Izmir, Turkey](#)
- S03-1 Objectives, Design and Methodology of the TürkSch
[Tolga Binbay - Dokuz Eylül University School of Medicine Department of Psychiatry, Izmir, Turkey](#)
Köksal Alptekin, Hayriye Elbi, Umut Kirli, Bülent Kayahan, Hüseyin Onay, Ferda Özkinay, Jim van Os
- S03-2 Familial liability, the BDNF-Val66Met polymorphism and psychotic-like experiences
[Köksal Alptekin - Dokuz Eylül University School of Medicine Department of Psychiatry, Izmir, Turkey](#)
Tolga Binbay, Hayriye Elbi, Hüseyin Onay, Ferda Özkinay, Nesli Zali, Jim van Os
- S03-3 Epidemiology of Major Depressive Disorder in Izmir, Turkey: Prevalence, Burden and Service Usage
[Ahmet Topuzolu - Dokuz Eylül University School of Medicine Department of Psychiatry, Izmir, Turkey](#)
Tolga Binbay, Köksal Alptekin, Hayriye Elbi, Feride Aksu Tanik, Halis Ulaş
- S03-4 Low in prevalence, high in burden: Alcohol and substance abuse in Izmir, Turkey
[Halis Ulaş - Dokuz Eylül University School of Medicine Department of Psychiatry, Izmir, Turkey](#)
Tolga Binbay, Köksal Alptekin, Hayriye Elbi

Thursday
11:00 - 12:30
Studio Stuttgart

- S04** **Models of Case Management for Psychiatric Disorders in the Swiss Context**
Stéphane Morandi - Department of Psychiatry-CHUV, Lausanne, Switzerland;
Thomas Becker - Ulm University Germany (Discussant)
- S04-1** Elements of Integrated Care: Post-Discharge Network Coordination Program (PDNC-P)
Agnes von Wyl - Zürcher Hochschule für Angewandte Wissenschaften, Zürich, Switzerland
Mara Klauser, Silvia Passalacqua, Gisela Heim, Wulf Rössler, , Andreas Andrea
- S04-2** Efficacy of transitional case management following psychiatric hospital discharge: a randomized control trial
Stéphane Morandi - University Hospital of Lausanne (CHUV), Switzerland
Charles Bonsack, Silvia Gibellini Manetti, Sophia Gebel, Pascale Ferrari
- S04-3** Transition from psychiatric hospitalisation to supportive housing: a quantitative and qualitative project
Pascale Ferrari - University Hospital of Lausanne (CHUV), Switzerland
Alexandre Robert, Marie McCormick, Gilles Bangerter, Pierre Gobet

Thursday
11:00 - 12:30
Studio München

- OP01** **Primary and community care**
Dirk Richter - Bern University of Applied Sciences, Health Division, Switzerland;
Hans Joachim Salize - Heidelberg University, Mannheim, Germany
- OP01-1** The Refocus trial: Quantitative and economic evaluation of a pro-recovery intervention within community based mental health services.
Mary Leamy - Institute of Psychiatry, King's College London, UK
Victoria Bird, Clair Le Boutillier, Julie Williams, Paul McCrone, Mike Slade
- OP01-2** Education for Community Care in Slovenia: European Public Health Education or Training in Skills and Legislation
Vesna Svab - University Ljubljana, Slovenia
Vladimira Tomi, Elisabeth Muschik

- OP01-3 The influence of physicians' recommendations on primary care patients' reluctance toward mental health treatment
 Tzipi Hornik-Lurie - Work Department, Ben Gurion University of the Negev, Israel
 Yaacov Lerner, Nelly Zilber, Marjorie Feinson, Julie Cwikel
- OP01-4 Therapeutic Alliances and Service User Satisfaction in Residential Crisis Houses and Acute Psychiatric Wards: A mixed-methods U.K. based study.
 Nicola Morant - University College London, UK
 Angela Sweeney, Sarah Fahmy, Emma Burgess, Fiona Nolan, Sonia Johnson
- OP01-5 Between Hospital and Supported Housing: Preliminary Results of a Qualitative Evaluation Study of Transitional Psychiatric Nursing Care
 Dirk Richter - Bern University of Applied Sciences, Health Division, Switzerland
 Franziska Boinay, Markus Berner

Thursday
 11:00 - 12:30
 Konferenzraum

- S05 **The risk of PTSD and other mental disorders after trauma**
Hans-Ulrich Wittchen - Dresden University of Technology, Germany
- S05- 1 Rates of Mental Disorders Among German Soldiers Deployed to Afghanistan
 Hans-Ulrich Wittchen - Institute of Clinical Psychology and Psychotherapy, Dresden University of Technology, Germany
 Sabine Schönfeld, Clemens Kirschbaum, Sebastian Trautmann, Christin Thureau, Jens Siegert
 Michael Höfler, Peter Zimmermann
- S05- 2 Substance use and substance use disorders in recently deployed and never deployed soldiers
 Sebastian Trautmann - Institute of Clinical Psychology and Psychotherapy, Dresden, Germany
 Sabine Schönfeld, Silke Behrend, Michael Höfler, Peter Zimmermann, Hans-Ulrich Wittchen

S05-3 Incidence, course and predictors of deployment-related mental disorders
[Hans-Ulrich Wittchen - Institute of Clinical Psychology and Psychotherapy, TU Dresden, Germany](#)
Sabine Schönfeld, Sebastian Trautmann, Anke Heinrich, Judith Schäfer, Clemens Kirschbaum, Michael Höfler, Peter Zimmermann

S05-4 Population Burden and Demographic Predictors of Posttraumatic Stress Disorder (PTSD) in Bulgaria
[Michail Okoliyski - National Centre of Public Health and Analyses, Sofia, Bulgaria](#)
Hristo Hinkov, Zahari Zarkov, Vladimir Nakov, Romyana Dinolova, Plamen Dimitrov, Toma Tomov

Thursday
12:30 - 13:30
Foyer, First Floor

Lunch

Thursday
13:30 - 14:30
Großer Saal

Keynote lectures 2

Tom Burns - University of Oxford, UK;
Martin Preisig - Lausanne University Hospital, Switzerland

K04 Work environments and mental health: from observation to intervention
[Stephen A. Stansfeld - Queen Mary University of London, UK](#)

K05 How do epidemiology and health services research interact
[Mirella Ruggeri - University of Verona, Italy](#)

Thursday
14:30 - 16:00
Großer Saal

S06 **The epidemiology of psychosis: new evidence on environmental risk factors and mechanisms**
[Craig Morgan - Institute of Psychiatry, King's College London, UK](#)

- S06-1 Validity and Bias in Assessments of Abuse Among Cases with Psychosis
[Kathryn Hubbard - Centre for Epidemiology and Public Mental Health, Health Service and Population Research Department, Institute of Psychiatry, King's College London, UK](#)
 Stephanie Beards, Charlotte Gayer-Anderson, Tjasa Velikonja, Adanna Onyejiaka, Carmine Pariante, Ulrich Reininghaus, Craig Morgan
- S06-2 Social support as an effect modifier or mediator in the relationship between childhood adversity and psychosis?
[Charlotte Gayer-Anderson - Institute of Psychiatry, King's College London, UK](#)
 Kathryn Hubbard, Stephanie Beards, Ulrich Reininghaus, Paola Dazzan, Valeria Mondelli, Robin Murray, Craig Morgan
- S06-3 Childhood adversity, stress sensitivity, and psychosis: an experience sampling study
[Ulrich Reininghaus - Institute of Psychiatry, King's College London, UK](#)
 Matthew Kempton, Lucia Valmaggia, Adanna Onyejiaka, Robin Murray, Til Wykes, Inez Myin-Germeys, Craig Morgan
- S06-4 Threatening and Intrusive Life Events as Precursors to Psychotic Disorders
[Stephanie Beards - Institute of Psychiatry, King's College London, UK](#)
 Helen Fisher, Charlotte Gayer-Anderson, Kathryn Hubbard, Tjasa Velikonja, Paola Dazzan, Adanna Onyejiaka, Craig Morgan

Thursday
 14:30 - 16:00
 Kleiner Saal

- S07 **Mental illness stigma - new findings from individual and cultural perspectives**
[Georg Schomerus, Department of Psychiatry, University Medicine Greifswald, Germany](#)
- S07-1 Global patterns and cross-cultural variations in reported discrimination among people with major depression. Findings from the ASPEN/INDIGO study
[Antonio Lasalvia - Department of Public Health and Community Medicine, Section of Psychiatry, University of Verona, Verona, Italy](#)
 Chiara Bonetto, Tine Van Bortel, Silvia Zoppi, Damiano Salazzari, Doriana Cristofalo, Graham Thornicroft, the ASPEN/INDIGO Study Group

- S07-2 The mental health consequences of the recession: economic hardship and employment of people with mental health problems in 27 European countries
[Sara Evans-Lacko - Health Service Research Department, Institute of Psychiatry, King's College London, UK](#)
 Martin Knapp, Paul McCrone, Graham Thornicroft, Ramin Mojtabai
- S07-3 Self-labeling and stigma variables across one year among young people at risk for psychosis
[Nicolas Rüsçh - Department of Psychiatry II, University of Ulm, Germany](#)
 Mario Müller, Karsten Heekeren, Anastasia Theodoridou, Wulf Rössler
- S07-4 Can belief in a continuum of symptoms reduce the stigma of mental illness?
[Georg Schomerus - Department of Psychiatry, University Medicine Greifswald, Germany](#)
 Herbert Matschinger, Matthias Angermeyer

Thursday
 14:30 - 16:00
 Garderobenfoyer

- S08 Health economic evaluation of psychiatric outpatient care: Methodological problems and recent developments**
Reinhold Kilian - Ulm University, Germany
- S08-1 Economic evaluation of early intervention in first-episode psychosis in Denmark (the OPUS trial)
[Lene Halling-Hastrup - Region Zealand, Psychiatric Research Unit, Denmark](#)
 Anne Thorup, Christian Kronborg, Mette Bertelsen, Pia Jeppesen, Per Jorgensen, Lone Petersen, Merete Nordentoft
- S08-2 Cost effectiveness of schizophrenia treatment provided by outpatient clinics in comparison to office based psychiatrists and GP in Germany
[Reinhold Kilian - Department of Psychiatry II, University of Ulm, Günzburg, Germany](#)
 Wiltrud Schepp, Prisca Weiser, Gerhard Längle, Tilman Steinert, Susanne Jaeger, Thomas Becker

Thursday
14:30 - 16:00
Studio Stuttgart

S08-3 Counting all the costs: the importance of looking at the economic impacts of poor physical health in people with mental health problem
[David McDaid - London School of Economics and Political Science, UK](#)
A-La Park

S08-4 Cost effectiveness of a health insurance based case management programme for patients with affective disorders
[Christian Jacke - Central Institute of Mental Health, Medical Faculty Mannheim, Heidelberg University, Germany](#)
Hans-Joachim Salize

S09 **Subtyping of common mental disorders: results from ZInEP and PsyCoLaus**
[Vladeta Ajdacic-Gross - Clinic for General and Social Psychiatry, University of Zurich, Switzerland](#)

S09-1 Familial aggregation patterns of major depressive episode subtypes in the general population
[Jennifer Glaus - Department of Psychiatry, Lausanne University Hospital, Switzerland](#)
Caroline Vandeleur, A. Lasserre, M. Strippoli J.-M. Aubry, M. Preisig

S09-2 New risk factor candidates for different psychosis syndromes
[Mario Müller - Zurich University Hospital for Psychiatry, Switzerland](#)
Stephanie Rodgers, Michael P. Hengartner, Wulf Rössler, Vladeta Ajdacic-Gross

S09-3 Quite specific: distinctive subtypes in specific phobia
[Vladeta Ajdacic-Gross, - Zurich University Hospital for Psychiatry, Switzerland](#)
Aleksandra Aleksandrowicz, Stephanie Rodgers, Mario Müller, Michael P. Hengartner, Wolfram Kawohl, Wulf Rössler, Martin Preisig

Thursday
14:30 - 16:00
Studio München

- S09-4 Subtyping specific phobias and obsessive-compulsive disorders: Comorbidity patterns of pure and mixed subtypes in two independent Swiss community samples
[Stephanie Rodgers - Zurich University Hospital for Psychiatry, Switzerland](#)
Mario Müller, Michael P. Hengartner, Wolfram Kawohl, Wulf Rössler, Martin Preisig, Vladeta Ajdacic-Gross
- OP02 Coercion, prison and forensic care
[Tilman Steinert - Ulm University, Germany;](#)
[Ronny Bruffaerts - KU Leuven, Belgium](#)
- OP02-1 Factors correlating with directive for forensic outpatient service- based on an exhaustive evaluation in Baden-Württemberg 2009-2012
[Jan Bulla - Zentrum für Psychiatrie \(ZfP\) Reichenau, Germany](#)
Thomas Ross, Jan Querengässer, Klaus Hoffmann
- OP02-2 Prevalence, Socio-demographic and Penal Correlates of Depression Among Inmates of the Port Harcourt Prison
[Uche Nwaopara - Department of Neuropsychiatry, University of Port Harcourt Teaching Hospital, Nigeria](#)
Princewill Stanley
- OP02-3 Perceived coercion in voluntary admission
[Brian O'Donoghue - Orygen Youth Health, Australia](#)
Eric Roche, Stephen Shannon, John Lyne, Kevin Madigan, Larkin Feeney
- OP02-4 The independent effects of income on involuntary admission, 2000-2010
[Ronny Bruffaerts - Department of Neurosciences, Research Group Psychiatry, KU Leuven, Belgium](#)
Katrien Schoevaerts, Broeders Alexianen, Joris Vandenberghe
- OP02-5 Life trajectories of psychosocial dysfunctioning and care of patients admitted to new long-term compulsory inpatient treatment
[Rob van den Brink - Department of Psychiatry, University Medical Centre Groningen, the Netherlands](#)
Grieke van Kranenburg, Wout Diekman, Durk Wiersma

Thursday
14:30 - 16:00
Konferenzraum

- S10 Trauma and post-traumatic stress disorder**
Matthew Hotopf - Institute of Psychiatry, King's College London, UK;
Nicola Fear - Institute of Psychiatry, King's College London, UK (Discussant)
- S10-1** Trauma and current symptoms of PTSD in South East London community
Souci Frissa - Academic Department Psychological Medicine, Institute of Psychiatry, King's College London UK
Stephani Hatch, Billy Gazard, SELCoH study team, Nicola Fear, Matthew Hotopf
- S10-2** The Role of Leaders in Sustaining Mental Health in US Troops Preparing for Deployment
Amy B. Adler - US Army Medical Research Unit-Europe, Heidelberg, Germany
Jeffrey L. Thomas
- S10-3** Heterogeneity of Posttraumatic Stress and Depression symptoms in Canadian veterans: Is the level of health related functioning associated with symptom group membership?
Cherie Amour - University of Ulster, UK
Ateka Contractor, Jon Elhai, Don Richardson
- S10-4** The impact of paternal PTSD on social and emotional development of their children: Results from the children of military fathers study
Nicola Fear - Department of Psychological Medicine, Institute of Psychiatry, King's College London, UK
Amy Iversen, Sarah Rowe, Alan Stein, Paul Ramchandani, Simon Wessely
- S10-5** Trauma, Post Traumatic Stress Disorder and Psychiatric Disorders in a middle income setting: prevalence and comorbidity in a Sri Lankan population
Sarah Dorrington - King's College London, Department of Psychological Medicine, Institute of Psychiatry, UK
Helena Zavos, Harriet Ball, Peter McGuffin, Fruhling Rijdsdijk, Sisira Siribaddana, Athula Sumathipala, Matthew Hotopf

Thursday
16:00 - 16:30
Foyer, First Floor

Coffee Break

Thursday
16:30 - 18:00
Großer Saal

S11 Mental Health Services and Parenthood: Resources and Challenges

Louise Howard - Institute of Psychiatry, King's College London, UK;
Silvia Krumm, Ulm University, Germany (Discussant)

S11-1 What do psychiatrists know about the children of their patients?
Michael Franz - Vitos Clinic for Psychiatry and Psychotherapy Bad Emstal, Kassel, University Giessen, Germany

Kanokkwan Eurviriyankul, Pichet Udomratn, Ahmad Hatim Sulaiman, Chia-Yih Liu

S11-2 Pre-conception to parenting: a systematic review and meta-synthesis of the qualitative literature on motherhood for women with severe mental illness
Clare Dolman - Section of Women's Mental Health, Health Service and Population Research

Ian Jones, Louise Howard

S11-3 The professional discourse on desire for children and parenthood in mental health service users in Germany - actual ethical challenges

Gisela Badura-Lotter - Institute of the History, Philosophy and Ethics of Medicine Ulm University, Germany

S11-4 Mental health professionals' attitudes towards reproductive/parenting issues among psychiatric patients

Carmen Checchia - Ulm University, Department of Psychiatry II, Germany
Silvia Krumm

Thursday
16:30 - 18:00
Kleiner Saal

S12 Mental disorders in the German Health Interview and Examination Survey for Adults (DEGS1-MH): Disease burden and service use.

Frank Jacobi - Psychologische Hochschule Berlin, Germany

S12-1 Work situation of people with mental disorders
Frank Jacobi - Psychologische Hochschule Berlin, Germany

Julia Roth, Lars Kroll, Thomas Lampert

Thursday
16:30 - 18:00
Garderobenfoyer

- S12-2 Service use and treatment of people with mental disorders in Germany
[Simon Mack - Technical University Dresden, Germany](#)
Frank Jacobi, Katja Beesdo-Baum, Hans-Ulrich Wittchen, Ulfert Hapke, Ulrike E. Maske, Jens Strehle
- S12-3 Depression: Prevalence, Disease Burden, Service Use and Treatment Barriers
[Katja Beesdo-Baum - Institute of Clinical Psychology and Psychotherapy, University of Technology Dresden](#)
Simon Mack, Frank Jacobi, Jens Strehle, Ulrike E. Maske, Ulfert Hapke, Hans-Ulrich Wittchen
- S12-4 Comorbidity of mental disorders and chronic somatic conditions in a population-based sample of adults aged 18-79 years in Germany: first results and methodological challenges
[Ulrike E. Maske - Robert Koch Institute Berlin, Germany](#)
Christa Scheidt-Nave, Ulfert Hapke, Frank Jacobi, Markus A Busch
- S13 **Understanding Social Determinants at Multiple Levels and Mental Disorder in Community Populations**
[Matthew Hotopf - Institute of Psychiatry, King's College London, UK;](#)
[Stephani Hatch - Institute of Psychiatry, King's College London, UK \(Discussant\)](#)
- S13-1 Neighbourhood social disorder and common mental illness
[Catherine Polling - King's College London, Institute of Psychiatry, UK](#)
Mizan Khondoker, Stephani Hatch, Matthew Hotopf
- S13-2 Can we identify latent classes of socioeconomic status and what are the associations with mental health?
[Laura Goodwin - King's College London, Institute of Psychiatry, UK](#)
Matthew Hotopf, Stephani Hatch
- S13-3 Dynamic Interplay of Socioeconomic Status and Health in Understanding Mental Health Disparities
[Bruce Link - Columbia University, New York, USA](#)
Dana March

Thursday
16:30 - 18:00
Studio Stuttgart

- S13-4 Mental health of an inner London non-heterosexual population
[Billy Gazard - Institute of Psychiatry, King's College London, UK](#)
Charlotte Woodhead, Stephani Hatch
- OP03 **Psychotropic drug treatment**
[Linda Magnusson Hanson - Stockholm University Sweden;](#)
[Markus Kösters - Ulm University, Germany](#)
- OP03-1 The effect of clozapine on premature mortality: an assessment of clinical monitoring and other potential confounders
[Richard D. Hayes - King's College London, Institute of Psychiatry, UK](#)
Johnny Downs, Chin-Kuo Chang, Richard G. Jackson, Hitesh Shetty, Matthew Broadbent, Matthew Hotopf, Robert Stewart
- OP03-2 Approval Process of Psychiatric Drugs in Europe: Time for a New Regulatory Strategy? A systematic review
[Irene Bighelli - Department of Public Health and Community Medicine, Section of Psychiatry, University of Verona, Italy](#)
Corrado Barbui
- OP03-3 Treatment with antidepressants in the Swedish population in relation to major workplace downsizing
[Linda Magnusson Hanson - Stress Research Institute, Stockholm University, Sweden](#)
Hugo Westerlund, Jussi Vahtera, Magnus Sverke, Holendro Chunkham, Kristina Alexanderson
- OP03-4 Mortality in patients who have been prescribed antipsychotic medication in Poland
[Pawel Zagozdzon - Medical University of Gdansk, Poland](#)
Magdalena Wrotkowska
- OP03-5 Patients' Experiences of Receiving Financial Incentives for their Anti-Psychotic Medication: A Qualitative Study
[Alexandra Forrest - Department of Psychiatry, University of Oxford, UK](#)
Nicola O'Connell, Ksenija Yeeles, Tom Burns, Stefan Priebe

Thursday
16:30 - 18:00
Studio München

- OP04** **Prevalence of mental disorders**
Arnstein Mykletun - Norwegian Institute of Public Health, Division of Mental Health, Oslo, Norway;
Patryk Piotrowski - Wroclaw Medical University, Poland
- OP04-1** Prevalence rates of mental disorders among individuals with Turkish migration backgrounds in Germany
Mike Mösko - University Medical Center Hamburg-Eppendorf, Germany
Ulrike Kluge, Demet Dingoyan, Andreas Heinz, Uwe Koch, Holger Schulz
- OP04-2** Prevalence and correlates of depressive symptoms and diagnosed depression in Germany – results from the German Health Interview and Examination Survey (DEGS1)
Markus Busch - Robert Koch Institute, Department of Epidemiology and Health Reporting, Berlin, Germany
Ulrike E. Maske, Ulfert Hapke
- OP04-3** Prevalence of affective disorders in Polish population - EZOP study. Is our society so healthy?
Patryk Piotrowski - Department of Psychiatry, Wroclaw Medical University, Wroclaw, Poland
Andrzej Kiejna, Tomasz Adamowski, Bogdan Wojtyniak, Jakub Stokwiszewski, Jacek Wciórka, Blazej Misiak, Jacek Moskalewicz
- OP04-4** Secular changes in the prevalence of common mental disorder. A systematic review and meta-analysis
Arnstein Mykletun - Norwegian Institute of Public Health, Division of Mental Health, Oslo, Norway
Meg Min-Jung Wang, Alexander Erga, Katrin Hagen, Nicholas Glozier, Felice Jacka, Matthew Hotopf, Samuel B. Harvey
- OP04-5** Association between healthy lifestyle behaviours and mental health - findings from the German Health Update (GEDA)
Amanda K. Buttery - Robert Koch Institute, Department of Epidemiology and Health Reporting, Berlin, Germany
Gert B. M. Mensik, Markus A. Busch

Thursday
18:00 - 19:00
Großer Saal

Keynote Lectures 3

*Ingmar Skoog - University of Gothenburg, Sweden;
Robert Stewart - Institute of Psychiatry, Kings College
London, UK*

K06 Dementia and mild cognitive impairment – a challenge for aging societies – occurrence, risk factors and consequences

Steffi. G. Riedel-Heller - University of Leipzig, Leipzig, Germany

K07 Epidemiological needs assessment for dementia: evidence and gaps

Carol Brayne - University of Cambridge, Cambridge, UK

Thursday
19:00 - 20:30
Foyer, First Floor

Welcome reception

Thursday
20:30
Registration Desk

Guided Ulm tour (1 ½ hours)

Friday, May 23rd

Numbers correspond to those in the book of abstracts

Friday

08:30 - 09:00

Großer Saal

Keynote Lectures 4

Stephen Stansfeld - Queen Mary University of London, UK;

Arnstein Mykletun - Norwegian Institute of Public Health, Division of Mental Health, Oslo, Norway

K08 Mild cognitive impairment: the importance of definitions

Mary Ganguli - University of Pittsburgh, USA

Friday

09:00 - 09:30

Foyer, First Floor

Coffee Break

Friday

09:30 - 11:00

Großer Saal

S14

Coercion in mental health services in Europe: experiences of involuntary admissions, community treatment orders and informal coercion

Brian O'Donoghue - Orygen Youth Health Melbourne, Australia

S14-1

Clinical and social outcomes one year after accumulated coercive events during psychiatric admission

Stephen Shannon - Royal College of Surgeons, Dublin, Ireland

Brian O'Donoghue

S14-2

Are informal coercion and formal compulsion related?

Ksenija Yeeles - Department of Psychiatry, University of Oxford, UK

Tom Burns

S14-3

Coercion in Switzerland: Introduction of Involuntary outpatient treatments

Stéphane Morandi - Department of Psychiatry, University Hospital of Lausanne (CHUV), Switzerland

S14-4

International themes on coercion in psychiatry and the work of the WASP coercion group

Andrew Molodynski - Department of Psychiatry, University of Oxford, UK

Friday
09:30 -11:00
Kleiner Saal

- S15** **Mental health at work is an increasing concern in Europe. What is the current knowledge on factors important for sustainable work participation?**
Gunnel Hensing - University of Gothenburg, Sweden
- S15-1** The relationship of recent life events and stressors in the home and workplace on the mental wellbeing of employees: the 2007 Adult Psychiatric Morbidity Survey
Charlotte Clark - Centre for Psychiatry, Barts & the London School of Medicine, Queen Mary University of London, UK
S. Mc Manus, S. Weich, R. Jenkins, P. Bebbington, T. Brugha, S. A. Stansfeld
- S15-2** Psychosomatic consultation in the workplace – conceptualization and experiences concerning user profiles
Harald Gündel - Klinik für Psychosomatische Medizin und Psychotherapie, Universitätsklinik Ulm, Germany
a multi-professional group of researchers and clinicians involved in these projects which will be recognized within the lecture
- S15-3** Self-assessed mental health problems and work capacity as determinants of return to work after sickness absence: a general population-based study
Gunnel Hensing - Department of Social Medicine, The Sahlgrenska Academy at the University of Gothenburg, Sweden
Monica Bertilsson, Gunnar Ahlborg Jr, Margda Waern, Marjan Vaez
- S15-4** CMD as a risk factor for sickness absence and disability pension in a life-course perspective – the development of a model. Work in progress
Simon Överland - Department of Community Psychology, University of Bergen, Norway
Samuel B. Harvey, Gunnel Hensing, Max Henderson

Friday
09:30 - 11:00
Garderobenfoyer

- S16** **Using natural language processing to enhance the Psychiatric Case Register**
Robert Stewart- Institute of Psychiatry, Kings College London, UK;
Angus Roberts - University of Sheffield, UK (Discussant)
- S16-1** Natural language processing and its application in electronic health records research
Angus Roberts - University of Sheffield, UK

- S16-2 Natural language processing and its practical application to enhance mental health research using electronic health records data
[Richard G. Jackson - South London and Maudsley NHS Foundation Trust, UK](#)
- S16-3 Evaluating a new natural language processing application for extracting antipsychotic medication data from clinical records
[Giouliana Kadra - Institute of Psychiatry, King's College London, UK](#)
 Richard G. Jackson, Matthew Broadbent, Hitesh Shetty, Chin-Kuo Chang, Robert Stewart, Richard D. Hayes
- S16-4 Automated identification of negative symptoms of schizophrenia from electronic health records and their association with health outcomes
[Nishamali Jayatilleke - Institute of Psychiatry, King's College London, UK](#)
 Rashmi Patel, Matthew Broadbent, Richard G Jackson, Caroline Johnston, Angus Roberts, Philip McGuire, Robert Stewart

Friday
 09:30 - 11:00
 Studio Stuttgart

- OP05** **Severe mental illness**
[Margareta Östman - Malmö University, Sweden;](#)
[Dietrich Rothenbacher - Ulm University, Germany](#)
- OP05-1 Prevalence of at-risk criteria of psychosis in the Swiss general population between 8 and 40 years
[Frauke Schultze-Lutter - University Hospital of Child and Adolescent Psychiatry, Switzerland](#)
 Chantal Michel, Benno G. Schimmelmann
- OP05-2 Changes in quality of life in patients with schizophrenia spectrum disorder during day clinic treatment
[Ingrid Sibitz - Department of Psychiatry and Psychotherapy, Medical University of Vienna, Austria](#)
 Katarina Provaznikova, Madeleine Lipp, Richard Lakeman, Michaela Amering
- OP05-3 Disparities in the health care of persons with schizophrenia: A case-control epidemiological study in a country with a national health insurance
[Gilad Gal - Tel Aviv-Yaffo Academic College, Israel](#)
 Itzhak Levav, Hanan Munitz

Friday
09:30 - 11:00
Studio München

- OP05-4 Association of attenuated psychotic symptoms with current mental disorders, quality of life, and help-seeking behaviour: results from a Swiss general population sample
Chantal Michel - University Hospital of Child and Adolescent Psychiatry, Bern, Switzerland
Benno G. Schimmelmann, Frauke Schultze-Lutter
- OP05-5 Low satisfaction with sex life in persons with severe mental illness living in the community
Margareta Östman - Department of Health and Welfare studies, Malmö University, Sweden
- OP06** **Suicide**
Vesna Jordanova - Institute of Psychiatry, London, UK;
Anthony Mann - Institute of Psychiatry, King's College London, UK
- OP06-1 Epidemiology of Suicide in Province of Bushehr – Iran
Abdollah Hajivandi - Bushehr University of Medical Sciences & Health Services, Islamic Republic of Iran
Fatemeh Akbarizadeh
- OP06-2 "He left me a message on Facebook": Comparing the risk profiles of self-harming patients who leave suicide notes compared with those who leave messages via new media
Jessica Barrett - King's College London, Institute of Psychiatry, UK
Robert Stewart, Sean Cross, William E. Lee
- OP06-3 Structured assessment of suicide risk in a crisis service: psychometric evaluation of the Nurses' Global Assessment of Suicide Risk scale (NGASR)
Mark van Veen - HAN University of Applied Sciences, Research Group Social Psychiatry & Mental Health Nursing, the Netherlands
- OP06-4 LAST-RD Study: Randomized Evaluation of the Effectiveness of Lithium in Subjects with Treatment-Resistant Depression and Suicide Risk
Francesca Girlanda - Department of Public Health and Community Medicine, Section of Psychiatry, University of Verona, Italy
Andrea Cipriani, Michela Nosè, Marianna Purgato, Irene Bighelli, Giulia Bisoffi, Michele Tansella, Corrado Barbui

Friday
09:30 - 11:00
Konferenzraum

OP06-5 Suicidality in adults with autism – population-based evidence
[Vesna Jordanova - Institute of Psychiatry, London, UK](#)

OP07 **Addiction and substance use**
[Fernando Wagner - Morgan State University, USA;](#)
[Arnstein Mykletun - Norwegian Institute of Public Health, Division of Mental Health, Oslo, Norway](#)

OP07-1 Opioid use, Mortality and the Influence of Psychiatric Comorbidity and Psychological Health
[Karolina Magda Bogdanowicz - Institute of Psychiatry, King's College London, UK](#)
Robert Stewart, Matthew Broadbent, Stephani Hatch, Matthew Hotopf, John Strang, Richard D. Hayes

OP07-2 Straightening out the J-curve of alcohol use and mortality
[William E. Lee - Plymouth University Peninsula Schools of Medicine and Dentistry, UK](#)
Matthew Hotopf

OP07-3 A Community-Based Peer-Led Model to Improve Smoking Cessation Outcomes among Poor and Underserved in United States
[Payam Sheikhattari - Morgan State University, USA](#)
Fernando Wagner

OP07-4 Substance Use in Adult Attention Deficit Hyperactivity Disorder (ADHD)
[Meichun Mohler-Kuo - Institute of Social and Preventive Medicine, University of Zurich, Switzerland](#)
Natalia Estévez

OP07-5 Alcohol consumption and symptoms as predictors of relapse of DSM-5 alcohol use disorder
[Marlous Tuithof - Netherlands Institute of Mental Health and Addiction, the Netherlands](#)
Margreet ten Have, Wim van den Brink, Wilma Vollebergh, Ron de Graaf

Friday
11:00 - 12:30
Foyer

Guided Poster Session

- P01** **Child and adolescent mental health**
Louise Howard - Institute of Psychiatry, King's College London, UK;
Ian Colman - University of Ottawa, Canada
- P01-1** The impact of perinatal depression on child development in Turkey
[Hamid Boztas - Izzet Baysal University, Psychiatry Department, Turkey](#)
 Vesile Senturk Cankorur, Melanie Abas, Oguz Berksun, Robert Stewart
- P01-2** Psychopathological predictors of antipsychotic medication use in childhood Autism Spectrum Disorders
[Johnny Downs - Psychological Medicine, King's College London, London, United Kingdom](#)
 Matthew Hotopf, Richard G. Jackson, Hitesh Shetty, T. Ford, Robert Stewart, Richard D. Hayes
- P01-3** Associations between Social Networking Site Use and Adolescent Mental Health
[Amanda Fahy - Centre for Psychiatry, Wolfson Institute of Preventive Medicine, Barts & The London School of Medicine and Dentistry, Queen Mary University of London, UK](#)
 Charlotte Clark, Neil Smith, Steven Cummins, Stephen Stansfeld
- P01-4** A Longitudinal Study of Disordered Eating in Australian Adolescents: Modelling Psychosocial and Individual Risk Factors
[Emma Jarosz - University of Melbourne, Australia](#)
 Isabel Krug, Craig Olsson
- P01-5** Externalizing, Anxiety and Depressive Disorders: Comorbidity, Prospective Associations, Correlates and Risk Factors in Youth
[Susanne Knappe - Institute of Clinical Psychology and Psychotherapy, TU Dresden, Germany](#)
 Roselind Lieb, Hans-Ulrich Wittchen, Katja Beesdo-Baum
- P01-6** Evaluating Oral Health Status of Children with Cognitive Disabilities
[Ramona Popovici - 'Victor Babe' University of Medicine and Pharmacy Timisoara, Faculty of Dentistry, Department of Preventive, Community Dentistry and Oral Health, Romania](#)
 Ruxandra Sava-Rosianu, Angela Podariu, Ramona Anculia, Mariana Pacurar, Marius Raica

- P01-7 Sense of Coherence and the Bio-Psycho-Social Well-Being. A Study among Adolescents
 Elżbieta Januszewska - Department of Clinical Psychology, Institute of Psychology, The John Paul II Catholic University of Lublin, POLAND
 Andrzej Januszewski, Izabella Januszewska
- P01-8 Confirmation of Character Model in Terms of R. C. Cloninger as a Predictor of Somatic and Mental Health. A Study Among Adolescents
 Andrzej Januszewski - Department of General Psychology, Institute of Psychology, The John Paul II Catholic University of Lublin, Poland
 Elżbieta Januszewska, Izabella Januszewska
- P02 Mental health across the lifespan**
 Mary Ganguli - University of Pittsburgh, USA;
 Steffi G. Riedel-Heller - University of Leipzig, Germany
- P02-1 Nationwide increasing incidence and diagnostic variation in adult ADHD from 1995-2012
 Christina Blanner - Department of Organic Psychiatric Disorders and Emergency Ward (Department M) Aarhus University Hospital, Risskov, Denmark
 Jan Walter, Dhillon Shanmuganathan, Lea Nørgreen Gustafsson, Knut Peter Løkke, Povl Munk-Jørgensen
- P02-2 Quality of life in the German population aged 60+ depending on Cognitive Status - No cognitive impairments vs. mild cognitive impairments
 Ines Conrad - Institute of Social Medicine, Occupational Health and Public Health (ISAP), University of Leipzig, Germany
 Carolin v. Gottberg, Herbert Matschinger, Christian Uhle, Reinhold Kilian, Steffi Riedel-Heller
- P02-3 The Impact of Changes in Population Projections on the Number of People suffering from Dementia in Europe
 Matthäus Fellingner - Division of Social Psychiatry, Department of Psychiatry and Psychotherapy, Medical University of Vienna, Austria
 Susanne Takacs, Fabian Friedrich, Stefanie Süssenbacher, Annemarie Unger, Marion Freidl, Johannes Wancata

- P02-4 Prevalence, incidence and factors associated with cognitive impairment among elderly from São Paulo city (Brazil) – the SABE (Health, Wellness and Aging) Study – 2010
[Ana Teresa Ramos-Cerqueira - Botucatu Medical School, São Paulo State University, Brazil](#)
 Jair Lício Ferreira Santos, Albina Rodrigues Torres, Yeda O. Duarte, Maria Lúcia Lebrão, Francisco Filho
- P02-5 Obsessive-Compulsive Symptoms in Medical Students: Prevalence, Severity and Correlates
[Albina Torres - Botucatu Medical School, São Paulo State University, Brazil](#)
 Bruna Cruz, Henrique Vicentini, Maria Cristina Lima, Ana Teresa Ramos-Cerqueira
- P02-6 Substance abuse patterns among university students: regional and gender differences
[Annemarie Unger - Medical University of Vienna, Department of Psychiatry, Division of Social Psychiatry, Austria](#)
 Laura Brandt, Anna Matznetter, Christina Zachbauer, Gabriele Fischer, Reinhold Jagsch
- P02-7 Quality of Life among the Elderly – Comparison of Subgroups containing Persons with Depression, Somatic Illnesses or Relatives Caring for Persons with Dementia
[Carolyn von Gottberg - Section Health Economics and Health Services Research, Ulm University, Germany](#)
 Ines Conrad, Herbert Matschinger, Jonathan Reinwald, Steffi Riedel-Heller, Reinhold Kilian
- P02-8 Burnout, Depression and Anxiety among Medical Students
[Lucia Jerg-Bretzke - Medical Psychology, University of Ulm, Germany](#)
 Manuel Fenkl, Harald C. Traue, Kerstin Limbrecht-Ecklundt
- P03 Treatment modalities and outcome**
[Bernd Puschner - Ulm University, Germany;](#)
[Sonia Johnson - University College London, UK](#)

- P03-1 Can the circle of intensive use of and drop-outs from treatment among personality disordered patients be stopped? SCID-II and clinical epidemiology
[Maja Biala - Department of Psychiatry, Wroclaw Medical University, Poland](#)
 Patryk Piotrowski, Andrzej Kiejna
- P03-2 Comparison of patients with similar main diagnoses across different treatment settings in Germany – results from the Psychiatric and Psychosomatic Treatment for Anxiety and Depression Study (PfAD)
[Dana Bichescu-Burian - ZfP Südwürttemberg, Department of Psychiatry and Psychotherapy I, Ulm University, Germany](#)
 Christina Cerisier, Julia Grempler, Agata Czekaj, Tilman Steinert
- P03-3 Contiguity of Self-efficacy with Decision Making and Satisfaction with Mental Health Services among Patients with Schizophrenia and Depression
[Inga Broka - University of Latvia, Latvia](#)
 Leva Bite, Ilze Damberga
- P03-4 Rehabilitation and self-management for chronic anxiety and depression, first results from the ZemCAD study
[Maringa de Weerd-Zoun - Radboud University, Nijmegen, the Netherlands](#)
 Marianne Laheij, Henny Sinnema, Jan Spijker
- P03-5 Association between Temporary Legal Inadmissibility of Involuntary Medication and Coercive Measures in Psychiatric Patients: A Longitudinal Analysis
[Erich Flammer - Centre for Psychiatry, Suedwuerttemberg, Germany](#)
 Tilman Steinert
- P03-6 Poor mental health and psychotropic treatment in relation to occupational position amongst adult Danes
[Ida E. H. Madsen - National Research Centre for the Working Environment, Copenhagen, Denmark](#)
 Hermann Burr, Reiner Rugulies
- P03-7 First contact with psychiatric services: What do relatives caring for schizophrenia patients need?
[Stefanie Süssenbacher - Division of Social Psychiatry, Department of Psychiatry and Psychotherapy, Medical University of Vienna, Austria](#)
 Fabian Friedrich, Annemarie Unger, Marion Freidl, Matthäus Fellinger, Johannes Wancata

- P03-8 Inpatient Traumatherapy – A Central Link in Supplying Specialized Care in General Psychiatry
[Gustav Wirtz](#) - Department of Psychiatry and Psychotherapy, SRH Hospital Karlsbad-Langensteinbach, Germany
 Steffen Aschenbrenner, Matthias Weisbrod
- P04 Caregiving, social integration and stigma**
[Matthew Hotopf](#) - Institute of Psychiatry, King's College London, UK;
[Georg Schomerus](#) - University of Greifswald, Germany
- P04-1 Suicide completion in patients with Serious Mental Illness: Preliminary analysis investigating the role of Ethnic Density
[Andrea Fernandes](#) - King's College London, UK
 Chin-Kuo Chang, Roopal Desai, Javier Lopez-Morinigo, Hitesh Shetty, Rina Dutta, Richard D. Hayes, Robert Stewart
- P04-2 Informal caregiving in schizophrenia: risk factors for burden among relatives
[Fabian Friedrich](#) - Department of Psychiatry and Psychotherapy, Medical University of Vienna, Austria
 Annemarie Unger, Marion Freidl, Stefanie Süssenbacher, Matthäus Fellingner, Gertraud Saumer, Johannes Wancata
- P04-3 Changes in autonomy and social integration in the course of schizophrenia – and what patients think would improve the quality of their lives
[Susanne Jaeger](#) - Ulm University, Department of Psychiatry I, Centre for Psychiatry Südwürttemberg, Department of Health Services Research, Germany
 Tilman Steinert, Gerhard Längle, Thomas Becker, Reinhold Kilian
- P04-4 The Diagnostic Pattern of Psychiatric Patients with Borderline Personality Disorder. A Nationwide study from 1995 through 2012
[Jesper Nørgaard Kjær](#) - Aarhus University Hospital, Department of Organic Psychiatric Disorders and Emergency Ward (Dep. M), Denmark
 Robert S. Biskin, Lea Nørgreen Gustafsson, Povl Munk-Jørgensen

- P04-5 A Mental Health Evaluation Framework for the 0-24 Immigrant Population in Ontario, Canada
[Kelvin Lam - Institute for Clinical Evaluative Sciences, Canada](#)
 Astrid Guttmann
- P04-7 Different biogenetic causal explanations are associated with different attitudes towards persons with schizophrenia, depression and alcohol dependence
[Sven Speerforck - University of Greifswald, Germany](#)
 Georg Schomerus, Susanne Pruess, Matthias Angermeyer
- P04-8 Care provision, Social Functioning and Participation in Society in an Amsterdam Cohort of Patients with Severe Mental Illness. Ad-on Studies: Victimization of patients with SMI; Pathways of care of SMI-patients prior to a psychiatric crisis.
[Jan Theunissen - Department of Psychiatry VUmc/MHCR GGZinGeest, Amsterdam, Netherlands](#)
 Martijn Kikkert, Pim Duurkoop, N. Lommerse, Liselotte de Mooij, Jack Dekker
- P05 Physical health and mental illness**
[Martin Preisig - Lausanne University Hospital, Switzerland;](#)
[Reinhold Kilian - Ulm University, Germany](#)
- P05-1 Incidence of Cancer among People with Serious Mental Illness
[Chin-Kuo Chang - Institute of Psychiatry, King's College London UK](#)
 Richard D Hayes, Matthew Broadbent, Matthew Hotopf, Elizabeth Davies, Henrik Møller, Robert Stewart
- P05-2 The cardiovascular diseases of severe mental illness (SMIs) in Taiwan
[Shaw-Ji Chen - Department of Psychiatry, Mackay Memorial Hospital Taitung Branch, Taiwan](#)
- P05-3 The effect of recent serious mental illness on breast cancer survival
[Ruth Cunningham - Department of Public Health, University of Otago, Wellington, New Zealand](#)
 Diana Sarfati, James Stanley, Debbie Peterson, Sunny Collings

- P05-4 Pain symptoms and their associations with affective and anxiety disorders in General Hospital patients
[Marion Freidl - Medical University of Vienna, Clinical Division of Social Psychiatry, Vienna, Austria](#)
 Bettina Bankier, Peter Berger, Andrea Topitz, Heinz Katschnig, Ingrid Sibitz
- P05-5 Health service utilisation and self-rated health among medical inpatients in Taiwan
[Vivian Isaac - Rural Clinical School, University of New South Wales, Australia](#)
 Craig McLachlan, Bernhard Baune, Chun-Ta Huang, Chia-Yi Wu
- P05-6 The prevalence of depression in rheumatoid arthritis: a systematic review and meta-analysis
[Faith Matcham - Department of Psychological Medicine, Institute of Psychiatry, King's College London, UK](#)
 Lauren Rayner, Sophia Steer, Matthew Hotopf
- P05-7 Styles of Coping with Negative Emotions and Chronic Stress in Patients with Hypertension
[Izabella Januszewska - Department of Clinical Psychology, Institute of Psychology, The John Paul II Catholic University of Lublin, Poland](#)
 Stanisława Steuden
- P05-8 Urinary Phytoestrogens and Depression in Perimenopausal US Women: NHANES 2005-2008
[Aline Richard - University of Zurich, Switzerland](#)
 Sabine Rohrmann, Meichun Mohler-Kuo, Stephanie Rodgers, Rebecca Moffat, Uwe Güth, Monika Eichholzer

Friday
 12:30 - 13:30
 Foyer, First Floor

Lunch

Friday
 13:30 - 15:00
 Großer Saal

- S17 **Women's mental health: new findings and new methodologies**
[Louise Howard - Institute of Psychiatry, King's College London, UK](#)

S17-1	<p>Pre-pregnancy obesity and mental disorders during pregnancy and postpartum: a systematic review and meta-analysis Emma Molyneux - Institute of Psychiatry, King's College London, UK Lucilla Poston, Sarah Ashurst-Williams, Louise M. Howard</p>
S17-2	<p>Exploring the longer-term mental health needs of trafficked people Sian Oram - Institute of Psychiatry, King's College London, UK Kylee Trevillion, Cathy Zimmerman, Nicky Stanley, Melanie Abas, Debra Bick, Rebecca French, Louise M. Howard</p>
S17-3	<p>Psychotropic Medication in Pregnancy for Women with Serious Mental Illness Clare Taylor - Institute of Psychiatry, King's College London, UK Matthew Broadbent, Richard D. Hayes, Mizanur Khondoker, Jack Ogden, Dharmindra Pasupathy, Robert Stewart, Louise M. Howard</p>
S17-4	<p>Group-based psychotherapy for pregnant women with a mental disorder compared to individual counselling: Patient-preference randomized controlled trial Leontien van Ravesteyn - Erasmus University Medical Centre Rotterdam, Netherlands Erwin Birnie, Tom Schneider, Mijke Lambregtse-van den Berg</p>
<p>Friday 13:30 - 15:00 Kleiner Saal</p>	<p>S18 Clinical decision making in the treatment of people with severe mental illness: European multicentre study Bernd Puschner, Ulm University, Germany; Margareta Östman, Malmö University, Sweden <i>(Discussant)</i></p>
S18-1	<p>Recovery and decision-making involvement in people with severe mental illness Sabine Loos - Department of Child and Adolescent Psychiatry/Psychotherapy, Ulm University, Germany Bernd Puschner, Benjamin Meyer, Mike Slade</p>

Friday
13:30 - 15:00
Garderobenfoyer

S18-2 The relation between clinical decision making and service use in people with severe mental illness
[Suzanne Cosh - Section Process-Outcome Research, Department of Psychiatry II, Ulm University, Germany](#)
Nadja Zentner, Sabine Loos, Mike Slade, Bernd Puschner, for the CEDAR study group

S18-3 Clinical decision making and unmet needs over one year in the routine treatment of people with severe mental illness across Europe
[Bernd Puschner - Section Process-Outcome Research, Department of Psychiatry II, Ulm University, Germany](#)
Andrea Fiorillo, Malene Krogsgaard Bording, Mike Slade, for the CEDAR study group

OP08 Psychosocial Interventions
[Jo Phelan - Columbia University, USA;](#)
[Nicolas Rüsçh - Ulm University, Germany](#)

OP08-1 WELLFOCUS PPT - RCT of modified Positive Psychotherapy to improve well-being in psychosis
[Beate Schrank - King's College London, Institute of Psychiatry, UK](#)
Simon Riches, Andre Tylee, Tony Coggins, Mike Slade

OP08-2 Adverse outcome of psychiatric interventions: results from a systematic review
[Bauke Koekkoek - Social Psychiatry & Mental Health Nursing, HAN University of Applied Sciences, Netherlands](#)

OP08-3 A shared decision making training for inpatients with schizophrenia
[Johannes Hamann - University of Technology Munich, Germany](#)
Anna Parchmann, Katharina Bronner, Nina Gebhardt, Herbert Pfeiffer, Werner Kissling

OP08-4 Evaluation of Anti-Stigma Interventions with Sixth Grade Students: A 2 x 2 x 2 Pre-Post-Test Factorial Randomized Controlled Study
[Jo Phelan - Mailman School of Public Health, Columbia University, USA](#)
Bruce Link, Kris Painter

Friday
13:30 - 15:00
Studio Stuttgart

- OP08-5 Social Network Interventions and Severe Mental Illness: A Systematic Review
[Willeke A. Manders - HAN University of Applied Sciences, the Netherlands](#)
- OP08-6 Peer to Peer - Support in severe mental illness: Affective Disorders, Psychosis and Personality disorder – acceptance and resonance
[Candelaria Mahlke - University Medical Center Hamburg, Germany](#)
Friederike Ruppelt, Kolja Heumann
- OP09** **Depression and anxiety**
[Martin Härter - University Medical Centre Hamburg, Germany;](#)
[Steffi G. Riedel-Heller - University of Leipzig, Germany](#)
- OP09-1 Affective disorders in the elderly in different European countries: results from the MentDis_ICF65+ study
[Martin Härter - Department of Medical Psychology, University Medical Centre Hamburg, Germany](#)
Sylke Andreas
- OP09-2 Disability in Anxiety Disorders
[Sanne Hendriks - Pro Persona Mental Health Care, the Netherlands](#)
Jan Spijker, Carmilla Licht, Aartjan Beekman, Florian Hardeveld, Ron de Graaf, Neeltje Batelaan, Brenda Penninx
- OP09-3 Anxiety Disorders are associated with Infectious Diseases: A cross-sectional community study
[Cornelia Witthauer - University of Basel, Department of Psychology, Division of Clinical Psychology and Epidemiology, Switzerland](#)
Rosalind Lieb
- OP09-4 First-incidence of DSM-IV mood, anxiety and substance use disorders and its determinants: results from the Netherlands Mental Health Survey and Incidence Study-2
[Ron de Graaf - Netherlands Institute of Mental Health and Addiction, the Netherlands](#)
Margreet ten Have, Marlous Tuithof, Saskia van Dorsselaer
- OP09-5 Psychiatric history of women who have had an abortion
[Jenneke van Ditzhuijzen - Faculty of Social and Behavioral Science, Utrecht University, the Netherlands](#)
Margreet ten Have, Ron de Graaf, Carolus van Nijnatten, Wilma Vollebergh

OP09-6 Depression- and anxiety-related sick leave and the risk of permanent disability and mortality in the working population in Germany: a cohort study
[Felix Wedegaertner - Hannover Medical School, Germany](#)
Sonja Arnhold-Kerri, Nicola-Alexander Sittaro, Stefan Bleich, Siegfried Geyer, William E. Lee

Friday
13:30 - 15:00
Studio München

OP10 Mental health service provision
[Thomas Becker - Ulm University, Germany;](#)
[Carolin von Gottberg - Ulm University, Germany](#)

OP10-1 Globalization and mental health: a review of the literature
[Ali Montazeri - Mental Health Research Group, Health Metrics Research Center, Iranian Institute for Health Sciences Research, ACECR, Islamic Republic Of Iran](#)
Mahmood Tavousi, Sepideh Omidvari

OP10-2 Can we learn from Hegel for improving thinking about psychiatry?
[Jan Verhaegh - Philosopher of Psychiatry, European Network of Users and Survivors of Psychiatry](#)

OP10-3 Mental Illness Prevention and Mental Health Promotion in Germany - an overview
[Paulo Kling Lourenço - Department of Psychiatry II, Ulm University, BKH Günzburg](#)
Thomas Becker

OP10-4 Pathways to care of high risk for psychosis patients across four European regions
[Heinrich Graf von Reventlow - Evangelisches Zentrum für Beratung und Therapie am Weissen Stein, Germany](#)
Paul Patterson, Stephan Ruhrmann, Raimo K. R. Salokangas, Don Linszen, Max Birchwood, Joachim Klosterkötter, Georg Juckel

Friday
15:00 - 15:30
Foyer, First Floor

Coffee Break

Friday
15:30 - 17:00
Großer Saal

S19 Measuring social functioning in severe mental illness- recent developments and future directions
[Andrew Molodynski - University of Oxford, UK](#)

Friday
15:30 - 17:00
Kleiner Saal

- S19-1 Measuring Social Functioning in Severe Mental Illness
Tom Burns - Oxford University Social Psychiatry Group, UK
- S19-3 Assessment, qualification, and consequences of capacity limitations as measured with the Mini-ICF-APP
Michael Linden - Research Group Psychosomatic Rehabilitation, Charite University, Berlin, Germany
- S19-4 English Language Mini ICF-APP: validation, manual development, use in everyday practice and future directions
Andrew Molodynski - Oxford health NHS Foundation Trust, UK
- S20** **The impact of the economic crisis on psychiatric morbidity and mental health service delivery**
Grça Cardoso - NOVA University of Lisbon, Portugal
- S20-1 Changes in mental health services delivery under the economic crisis in Portugal
José Caldas de Almeida - NOVA University of Lisbon, Portugal
- S20-2 Mental health risks of economic crisis at primary care level in Spain
Margarida Gili - University of Balearic Islands, Spain
- S20-3 Research strategies to better understand the crisis impact on mental health - the SMAILE project
Manuela Silva - Faculty of Medical Sciences, NOVA University of Lisbon, Portugal
Adriana Loureiro, Paula Santana, José Caldas de Almeida
- S20-4 Family burden for relatives of schizophrenic patients in an era of severe socio-economic crisis
Christos Panagiotopoulos - Department of Social Sciences, Cyprus
Andreas Pavlakis, Menelaos Apostolou

Friday
15:30 -17:00
Garderobenfoyer

S20-5 Medicalization of the Uncertainty? An Empirical Study of the Relation between Unemployment/Job Insecurity, Professional Care Seeking and the Consumption of Antidepressants.
[Veerle Buffel](#) - Department of Sociology, Ghent University, Belgium
Rozemarijn Dereuddre, Piet Bracke

OP11 **Comorbidity**
[Anthony Mann](#) - Institute of Psychiatry, King's College London, UK;
[Reinhold Kilian](#) - Ulm University, Germany

OP11-1 Longitudinal Patterns of Depression and Anxiety in Coronary Heart Disease. Relationship to Cardiac Outcomes and Quality of Life
[Jorge Palacios](#) - Institute of Psychiatry, King's College London, UK
Andre Tylee, Mizanur Khondoker, Anthony Mann, Paul Williams, Matthew Hotopf

OP11-2 Sense of self-efficacy, empowerment and life satisfaction while choosing a career in adolescents and emergent adults with corrected congenital heart defects (JEMAH) in Germany and in Bolivia
[Erika Freudenthal](#) - Cardiac Center, La Paz, Bolivia
Alexandra Heath, Elisabeth Sticker

OP11-3 One-Year Course of Symptoms of Anxiety and Depression in Patients with Coronary Heart Disease: Prognostic Value and Unmet Medical Need
[Dietrich Rothenbacher](#) - Institute of Epidemiology and Medical Biometry, Ulm University, Germany
Andrea Jaensch, Ute Mons, Harry Hahmann, Bernd Wüsten, Thomas Becker, Wolfgang Koenig, Hermann Brenner

OP11-4 The psychosocial correlates of chest pain in a community population with coronary heart disease(CHD)
[Anthony Mann](#) - Institute of Psychiatry, King's College London, UK
Andre Tylee, Jorge Palacios, Paul Williams

OP11-5 Psychological distress following traumatic injury
[Emmylou Rahtz](#) - Queen Mary University of London, UK
Iain Hutschinson, Kam Bhui, Ania Korszun

Friday
15:30 - 17:00
Studio Stuttgart

OP11-6 An epidemiological landscape of severe mental illness and co-morbidity in the UK (2000-2012)
[Siobhan Reilly - Lancaster University, UK](#)
Ivan Olier, Claire Planner, Tim Doran, Darren Ashcroft, David Reeves, Linda Gask, Evan Kontopantelis

OP12 **Old age mental health**
[Holger Schulz - University Medical Centre of Hamburg, Germany;](#)
[Herbert Matschinger - University of Leipzig, Germany](#)

OP12-1 Associations between life style and vascular risk factors with severe cognitive impairments in old age: Results of four cohorts of KORA-Age
[Horst Bickel - Technical University Munich, Germany](#)
Rebecca T. Emeny, Margit Heier, Elena Lacruz, Birgit Linkohr, Annette Peters, Karl-Heinz Ladwig

OP12-2 Use of mental health services in the elderly: MentDis_ICF65+ study
[Holger Schulz - Department of Medical Psychology, University Medical Centre of Hamburg, Germany](#)
MentDis_ICF65 + study group

OP12-3 Aging and the WHOQOL-OLD. How the effect of age is mediated
[Herbert Matschinger - Institute of Social Medicine, Occupational Health and Public Health, University of Leipzig, Germany](#)
Ines Conrad, Carolin von Gottberg, Reinhold Kilian, Steffi Riedel-Heller

OP12-4 How well does Europe sleep? A comparative study of sleeping problems in Europe's older adults
[Vera van de Straat - Ghent University, Belgium](#)
Piet Bracke

Friday
15:30 - 17:00
Studio München

- OP12-5 Influence of depression on the diagnosis of MCI in a cohort at risk for Neurodegeneration: Results of the second follow-up of the TREND-study (Tübinger evaluation of Risk factors for Early detection of NeuroDegeneration)
[Florian G. Metzger](#) - Department of Psychiatry and Psychotherapy, University Hospital, Tübingen, Germany
Raphael Niebler, Ann-Christine Ehlis, Katja Hagen, Daniela Berg, Andreas J. Fallgatter, Walter Maetzler, Gerhard W. Eschweiler
- S21 **The Course of Mood and Anxiety Disorders: Results from Population-Based and Clinical Studies**
[Christine Kuehner](#) - University of Heidelberg, Germany;
[Martin Preisig](#) - Lausanne University Hospital, Switzerland (Discussant)
- S21-1 The role of inflammatory processes in the prospective association between depression and the components of the metabolic syndrome
[Martin Preisig](#)- Center for Psychiatric Epidemiology and Psychopathology, Department of Psychiatry, Lausanne University Hospital, Switzerland
A. Lasserre, Jennifer Glaus, Caroline Vandeleur, Gerard Waeber, Peter Vollenweider
- S21-2 A population study on depression in women followed from midlife in 1968 to late-life in 2009
[Ingmar Skoog](#) - Neuropsychiatric Epidemiology Unit, Institute of Neuroscience and Physiology, Sahlgrenska Academy of the University of Gothenburg, Sweden
Pia Gudmundsson, Tore Hällström, Margda Waern, Svante Östling
- S21-3 Two years course of anxiety and depression: results from NESDA (The Netherlands Study of Depression and Anxiety)
[Jan Spijker](#) - Netherlands Institute of Mental Health and Addiction
Florian Hardeveld, Sanne Hendriks, Brenda Penninx
- S21-4 Factors predicting the long-term illness course in a cohort of depressed inpatients
[Christine Kuehner](#) - RG Longitudinal and Intervention Research, Department of Psychiatry and Psychotherapy, Mannheim Medical Faculty, University of Heidelberg, Germany
Roselind Lieb

S21-5

Long-term course and mortality of patients with manic, bipolar and depressive disorders

Jules Angst - Department of Psychiatry, Psychotherapy and Psychosomatics, Psychiatric Hospital, University of Zurich, Switzerland

Martin Preisig, Michael Hengartner, Wulf Rössler, Vladeta Ajdacic-Gross, Alex Gamma, Detlef von Zerssen, Felix Angst

Friday
17:00 - 18:00
Großer Saal

Keynote Lectures 5

Jan Spijker – Netherlands Institute of Mental Health and Addiction Utrecht, Netherlands;

Siegfried Weyerer, Central Institute of Mental Health, Mannheim, Germany

K09 Pregnancy Outcome in women with psychosis
Louise Howard - Institute of Psychiatry, King's College London, UK

K10 Crisis care in England: evidence and implementation
Sonia Johnson - University College London, UK

Friday
19:30 - 24:00
Stadthaus Ulm

Gala Dinner at Stadthaus Ulm

Saturday, May 24th

Numbers correspond to those in the book of abstracts

Saturday
08:30 - 09:30
Großer Saal

Keynote Lectures 6

Sir David Goldberg - Institute of Psychiatry, King's College London, UK;
Bernd Puschner - Ulm University, Germany

- K11** User-led research and mental health care practice
Diana Rose - Institute of Psychiatry, King's College London, UK;
- K12** Quality and effectiveness of services for people with complex mental health needs
Helen Killaspy - University College London, UK

Saturday
09:30 - 11:00
Großer Saal

S22

Assuring and benchmarking the quality of mental health services

Anke Bramesfeld - AQUA-Institute, Göttingen, Germany;
Helen Killaspy - University College London, UK (Discussant)

S22-1

Quality of mental health and social care in Europe. The REFINEMENT project experience
Valeria Donisi - Section of Psychiatry and Clinical Psychology, Verona University, Italy
Gaia Cetrano, Laura Rabbi, Federico Tedeschi, Damiano Salazzari, Francesco Amaddeo

S22-2

Developing a mandatory cross-sectoral quality assurance system in mental health care in Germany
Anke Bramesfeld - AQUA-Institute, Göttingen, Germany
Constance Stegbauer, Joachim Szecsenyi

S22-3

The "PromQual" study - promoting and assessing quality of care in longer term mental health facilities in Portugal
Graça Cardoso - Faculty of Medical Sciences, NOVA University of Lisbon, Portugal
Ana Luísa Papoila, José Caldas de Almeida

S22-4

The development, application and dissemination of QuIRC, Quality Indicator for Rehabilitative Care
Sarah White - Division of Population Health Sciences, St Georges University of London, UK

	S22-5	13 years of experience in accrediting mental health care organizations in France Anne Depaigne-Loth - HAS Haute Autorité de Santé, France Gersende Georg, Vincent Mounic
	S23	Use of Coercion in Mental Health Services in different European countries: Legislation, politics, data, developments Tilman Steinert - Ulm University, Weissenau, Germany
Saturday 09:30 - 11:00 Kleiner Saal	S23-1	Use of coercion in mental health services in Germany Tilman Steinert - Ulm University, Weissenau, Germany
	S23-2	Use of coercion in mental health services in Switzerland Matthias Jaeger - Psychiatric University Hospital Zurich, Switzerland
	S23-3	Use of coercion in mental health services in the Netherlands Eric Noorthoorn - GGNet, Netherlands
	S23-4	Use of coercion in mental health services in the UK Andrew Molodynski - Department of Psychiatry, University of Oxford, UK
Saturday 09:30 - 11:00 Garderobenfoyer	S24	Comorbidity and health service use Laura Goodwin - Institute of Psychiatry, King's College London, UK; Max Henderson - Institute of Psychiatry, King's College London, UK (Discussant)
	S24-1	Mental-physical comorbidity and mental health service use Lisa Aschan - Institute of Psychiatry, King's College London, UK Matthew Hotopf, Max Henderson (joint senior author), Stephani Hatch (joint senior author)

- S24-2 The associations of polydrug use and mental health comorbidity with service use and functioning: a comparison of national and inner city samples
[Jennifer L. Carter - Institute of Psychiatry, King's College London, UK](#)
 Lisa Aschan , Stephani Hatch (joint senior author), Matthew Hotopf (joint senior author)
- S24-3 Patterns of physical health co/multi-morbidities and serious mental illness
[Charlotte Woodhead - Institute of Psychiatry, King's College London, UK](#)
 Mark Ashworth, Peter Schofield , Max Henderson
- S24-4 Inequalities in Mental Health Services by Ethnicity: the role of ethnic identity, religious involvement and discrimination
[Stephani Hatch - Institute of Psychiatry, King's College London, UK](#)
 Laura Goodwin, Souci Frissa, Matthew Hotopf

Saturday
 09:30 - 11:00
 Studio Stuttgart

- OP13 Poverty and mental health**
[Tom Burns - University of Oxford, UK;](#)
[Markus Kösters - Ulm University, Germany](#)
- OP13-1 Disease burden and Service Delivery" - Identified gap hindering access to service delivery for People living with Disabilities and Psychiatric disorders, Example from Nigeria, West Africa
[Bello Bala - Disabled Rehabilitation Foundation, Abuja, Nigeria](#)
 Bamibetan Olukemi, Irene Ogbogu
- OP13-2 Welfare Receipt and Mental Health in Australia
[Kim Kiely - Australian National University, Australia](#)
 Peter Butterworth
- OP13-3 The effectiveness of service provisions for homeless people with mental illness: A systematic review
[Amy Mitchell - University of Oxford, UK](#)
 Tom Burns

- OP13-4 Mental Health and HIV Integration in Zimbabwe: Building the Evidence for a Community-Based Intervention among Clinical, Community and Traditional Medicine Practitioners
Malia Duffy - John Snow Inc., Boston, USA
Helen Cornman, Melissa Sharer
- OP13-5 Changes in mental health prevalence in returnee forced migrants after prolonged internal displacement: A follow-up study in Sri Lanka (COMRAID-R)
Chesmal Siriwardhana - Institute of Psychiatry, King's College London, UK
Robert Stewart

Saturday
09:30 - 11:00
Studio München

OP14 Child and adolescent mental health
Neil Smith - Queen Mary University of London, UK;
Suzanne Cosh - Ulm University, Germany

- OP14-1 Ethnic differences in positive mental wellbeing and depression in adolescents in East London UK: Findings from the Olympic Regeneration in East London Study (ORiEL)
Neil Smith - Queen Mary University of London, UK
Amanda Fahy, Vanathi Tharmaratnam, Daniel Lewis, Claire Thompson, Charlotte Clark, Steven Cummins, Stephen Stansfeld
- OP14-2 Young adults: Service use and psychiatric drug prescriptions in relation to common mental disorders; a comparison between age groups during the first decade of the twenty-first century
Kyriaki Kosidou - Centre for Epidemiology and Community Medicine, Stockholm County Council & Department of Public Health Sciences, Karolinska Institutet, Sweden
Cecilia Magnusson, Henrik Dal, Christina Dalman
- OP14-3 Trajectories of Neighbourhood Cohesion Throughout Childhood and Adolescent Mental Health in a National Canadian Cohort
Ian Colman - University of Ottawa, Canada
Seanna McMartin, Mila Kingsbury, Maeve Wickham, James Kirkbride

- OP14-4 Cumulative risk of mood episodes in children at high-risk for mood disorders in function of age of onset of parental episodes
[Caroline Vandeleur - Lausanne University Hospital, Switzerland](#)
 Enrique Castelao, Marie-Pierre Strippoli, Jean-Michel Aubry, Martin Preisig
- OP14-5 Conversational skills (pragmatics) are associated with mental health
[Johannes Fellingner - Institute for Neurology of Senses and Language, Austria](#)
 Daniel Holzinger

Saturday
 11:00 - 11:30
 Foyer, First Floor

Coffee Break

Saturday
 11:30 - 13:00
 Großer Saal

- S25 **Mental health care provision for adults with mild or moderate intellectual disabilities and a comorbid psychiatric disorder. The MEMENTA-Study**
[Matthias Schützwohl - University of Technology Dresden, Germany;](#)
[Margareta Östman - Malmö University, Sweden \(Discussant\)](#)
- S25-1 Mental health problems and specific needs in adults with mild or moderate intellectual disabilities
[Matthias Schützwohl - Department of Psychiatry and Psychotherapy, Dresden University of Technology, Germany](#)
 Anke Vogel, Andrea Koch, Andrea Pfennig, Amelie Werner, Katrin Arnold, Hans-Joachim Salize, Bernd Puschner
- S25-2 Caregiver burden in people with intellectual disability
[Amelie Werner - Central Institute of Mental Health, Mannheim, Germany](#)
 Elke Voß, Carolin Kühn, Hans-Joachim Salize, Matthias Schützwohl

	S25-3	Mental health care for people with intellectual disabilities and mental health problems: qualitative study <i>Maja Stiawa - Department of Psychiatry II, Ulm University, Germany</i> Katrin Arnold, Nadine Koslowski, Bernd Puschner, Matthias Schützwohl
Saturday 11:30 - 13:00 Kleiner Saal	S26	A integrated urban model of social inclusion involving rehabilitation assertive outreach services and community social networks for individuals with enduring mental health problems in Ireland <i>Ena Lavelle - Tallaght Hospital, Dublin, Ireland</i>
	S26-1	The stepping in programme; a collaboration between a community partnership and a community rehabilitation assertive outreach services <i>Susan Kehoe - Department of Psychiatry, Acute Psychiatric Unit, Tallaght Hospital, Ireland</i>
	S26-2	My recovery, my home: supporting sustainable transition into independent community living <i>John Cowman - Department of Psychiatry, Acute psychiatric unit, Tallaght Hospital, Ireland</i>
	S26-3	Supporting communication and enabling social integration <i>Jennifer Brophy - Department of Psychiatry, Acute Psychiatric Unit, Tallaght Hospital, Ireland</i>
Saturday 11:30 - 13:00 Garderobenfoyer	OP15	Workplace and mental health <i>Harald Gündel - Universitätsklinik Ulm, Germany;</i> <i>Peter Butterworth - The Australian National University, Australia</i>
	OP15-1	Exploration of the user profil of a psychosomatic consultation in the workplace by latent class analysis <i>Eva Rothermund - University Clinic for Psychosomatic Medicine and Psychotherapy, Ulm, Germany</i> Reinhold Kilian, Bernhard Reiter, Dorothea Mayer, Michael Hölzer, Petra Beschner, Monika Annemarie Rieger, Harald Gündel

- OP15-2 Workplace bullying, psychosocial job characteristics and mental health: findings from the PATH through Life project
[Peter Butterworth - The Australian National University, Australia](#)
Kim Kiely, Liana Leach, Sarah Olesen
- OP15-3 Social Firms: a Route to Recovery for people with mental illness. The SoFARR study
[Steven Marwaha - University of Warwick, UK](#)
Alyssa Milton, Eleanor Gilbert, Sonia Johnson, Nicola Morant, Nicholas Parsons, Adrian Fisher, Swaran Singh
- OP15-4 Self-assessed mental well-being and work capacity as predictors of work participation - a follow-up study of newly sick-listed individuals
[Monica Bertilsson - Department of Social Medicine, The Sahlgrenska Academy at the University of Gothenburg, Sweden](#)
Marjan Vaez, Margda Waern, Gunnar Ahlborg Jr, Gunnel Hensing
- OP15-5 Is the association between work stress and depressive symptoms mediated by work family conflict in female and male employees?
[Jean-Baptist du Prel - Institute of the History, Philosophy and Ethics of Medicine, Ulm University, Germany](#)
Richard Peter
- OP15-6 The IPS Attitude Check List: Do attitudes represent a challenge for implementation of vocational rehabilitation schemes for severe mental illness?
[Beate Brinchmann - Nordland Hospital Trust, Norway](#)
Samuel B. Harvey, Arnstein Mykletun

Saturday
11:30 - 13:00
Studio Stuttgart

- OP16 Gender, family and caregiving**
Birgit Reime - University of Applied Sciences Furtwangen, Germany;
Sabine Loos - Ulm University, Germany
- OP16-1 A psychosocial risk factor model for female eating disorders: A European Multicentre Project
Isabel Krug - University of Melbourne, Australia
Matthew Fuller-Tyszkiewicz, Sarah Mitchell, Fernando Fernandez-Aranda, Andreas Karwautz, David Collier, Janet Treasure, Nadia Micali
- OP16-2 New Perspectives for Families with a Parent with Mental Illness in Switzerland
Kurt Albermann, Centre of Social Pediatrics, Switzerland
Monika Alessi, Christine Gäumann, Ronnie Gundelfinger, Renate Gutmann, Brigitte Müller
- OP16-3 Risk indicators of mood and anxiety disorders among informal caregivers
Marlous Tuithof - Netherlands Institute of Mental Health and Addiction, the Netherlands
Margreet ten Have, Saskia van Dorsselaer, Ron de Graaf
- OP16-4 What does the label “lack of maternal cooperation” tell us about childbearing women? Descriptive study based on routinely collected perinatal data
Birgit Reime - University of Applied Sciences Furtwangen, Germany
Cornelia Gradel, Paul Wenzlaff
- OP16-5 Does low Parental Warmth and Monitoring predict Disordered Eating in Australian Male and Female Adolescents?
Isabel Krug - University of Melbourne, Australia, Deakin University, Melbourne, Australia
Anisha Sorabji, Ross King, Craig Olsson

Saturday
13:00 - 14:00
Großer Saal

Closing Lecture

*Thomas Becker, Ulm University, Germany;
Markus Kösters, Ulm University, Germany*

CL Depression with, and without, anxiety

*Sir David Goldberg - Institute of Psychiatry, King's
College London, UK*

Poster Prizes and Closing Remarks

*Thomas Becker - Ulm University, Germany;
Robert Stewart - Institute of Psychiatry, King's College
London, UK*

Saturday
14:00 - 15:00
Foyer, First Floor

Lunch

Program changes

Since the book of abstracts was finalized, the following changes have been made

Withdrawn

- P04-6 Perceived public stigma and recovery outcomes among people with mental illness: Testing mediator and moderator effects of self-stigma
Yin-Ju Lien - Department of Health Promotion and Health Education, National Taiwan Normal University, Taiwan
Yu-Chen Kao, Sheng-Chiang Wang, Yia-Ping Liu, Shwu-Jon Lin, Chien-Wen Lu, Ching-Hui Loh
- S19-2 Comparison of self- and clinician's ratings of Personal and Social Performance in patients with schizophrenia
Georg Juckel - University Hospital Bochum, Germany

Index of names

Abas, Melanie.....	45, 52	Berg, Daniela	59
Adamowski, Tomasz	38	Berger, Peter.....	51
Adler, Amy B.	34	Berksun, Oguz	45
Ahlborg Jr, Gunnar	41, 67	Berner, Markus	28
Ajdacic-Gross, Vladeta . 17, 32, 33, 60		Bertelsen, Mette,.....	31
Akbarizadeh, Fatemeh	43	Bertilsson, Monica.....	41, 67
Aksu Tanik, Feride	26	Beschoner, Petra	66
Albermann, Kurt	68	Bhui, Kam	57
Aleksandrowicz, Aleksandra	32	Biala, Maja	48
Alessi, Monika	68	Bichescu-Burian, Dana	48
Alexanderson, Kristina	37	Bick, Debra	52
Alexianen, Broeders	33	Bickel, Horst.....	25, 58
Alptekin, Köksal.....	16, 26	Bighelli, Irene	37, 43
Amaddeo, Francesco	61	Binbay, Tolga	26
Amering, Michaela.....	42	Birchwood, Max	55
Amour, Cherie	34	Bird, Victoria.....	27
Anculia, Ramona.....	45	Birnie, Erwin.....	52
Andrea, Andreas	27	Biskin, Robert S	49
Andreas, Sylke	54	Bisoffi, Giulia	43
Angermeyer, Matthias	31, 50	Bite, Leva	48
Angst, Felix.....	60	Blanner, Christina	15, 22, 46
Angst, Jules.....	60	Bleich, Stefan.....	55
Apostolou, Menelaos.....	56	Bogdanowicz, Karolina Magda	44
Arnhold-Kerri, Sonja	55	Boinay, Franziska	28
Arnold, Katrin.....	65, 66	Bonetto, Chiara	30
Aschan, Lisa.....	62, 63	Bonsack, Charles	27
Aschenbrenner, Steffen	49	Boztas, Hamid.....	45
Ashcroft, Darren	58	Bracke, Piet.....	57, 58
Ashurst-Williams, Sarah	52	Bramesfeld, Anke.....	20, 61
Ashworth, Mark	63	Brandt, Laura	47
ASPEN/INDIGO Study Group	30	Brayne, Carol	17, 39
Aubry, Jean-Michel.....	32, 65	Brenner, Hermann	57
Badura-Lotter, Gisela	35	Brinchmann, Beate	67
Bala, Bello	63	Broadbent, Matthew 37, 42, 44, 50, 52	
Ball, Harriet.....	34	Broka, Inga.....	48
Bangerter, Gilles.....	27	Bronner, Katharina.....	53
Bankier, Bettina	51	Brophy, Jennifer	66
Barbui, Corrado	37, 43	Bruffaerts, Ronny	17, 33
Barrett, Jessica.....	43	Brugha, T.	41
Batelaan, Neeltje	54	Buffel, Veerle	57
Baune, Bernhard	51	Bulla, Jan	33
Beards, Stephanie.....	30	Burgess, Emma	28
Bebbington, P.....	41	Burns, Tom 17, 20, 25, 26, 29, 37, 40, 56, 63	
Becker, Thomas 16, 19, 20, 23, 27, 31, 49, 55, 57, 69		Burr, Hermann	48
Beekman, Aartjan.....	54	Busch, Markus	36, 38
Beesdo-Baum, Katja	36, 45	Butterworth, Peter.....	20, 63, 66, 67
Behrend, Silke	28	Buttery, Amanda K.....	38

Canvin, Krysia	25	Dorrington, Sarah	34
Cardoso, Graça	19, 56, 61	Downs, Johnny	37, 45
Carter, Jennifer L.	63	du Prel, Jean-Baptist	67
Castelao, Enrique	65	Duarte, Yeda O.	47
CEDAR study group	53	Duffy, Malia	64
Cerisier, Christina	48	Dutta, Rina	49
Cetrano, Gaia	61	Duurkoop, Pim	50
Chang, Chin-Kuo	37, 42, 49, 50	Ehlis, Ann-Christine	59
Chaturvedi, Nish	25	Eichholzer, Monika	51
Checchia, Carmen	35	Elbi, Hayriye	26
Chen, Shaw-Ji	50	Elhai, Jon	34
Chunkham, Holendro	37	Emeny, Rebecca T.	58
Cipriani, Andrea	43	Erga, Alexander	38
Clark, Charlotte	41, 45, 64	Eschweiler, Gerhard W.	59
Coggins, Tony	53	Estévez, Natalia	44
Collings, Sunny	50	Eurviriyanukul, Kanokkwan	35
Colman, Ian	45, 64	Evans-Lacko, Sara	31
Comijs, Hannie	25	Fahmy, Sarah	28
Conrad, Ines	46, 47, 58	Fahy, Amanda	45, 64
Contractor, Ateka	34	Fallgatter, Andreas J.	59
Cornman, Helen	64	Fear, Nicola	17, 34
Cosh, Suzanne	20, 53, 64	Feeney, Larkin	33
Cowman, John	66	Feinson, Marjorie	28
Cristofalo, Doriana	30	Fellinger, Johannes	65
Cross, Sean	43	Fellinger, Matthäus	46, 48, 49
Cruz, Bruna	47	Fenkl, Manuel	47
Cummins, Steven	45, 64	Fernandes, Andrea	49
Cunningham, Ruth	50	Ferrari, Pascale	27
Cwikel, Julie	28	Filho, Francisco	47
Czekaj, Agata	48	Fiorillo, Andrea	53
Dal, Henrik	64	Fischer, Gabriele	47
Dalman, Christina	64	Fisher, Adrian	67
Damberga, Ilze	48	Fisher, Helen	30
Davies, Elizabeth	50	Flammer, Erich	48
Dazzan, Paola	30	Ford, T.	45
de Almeida, José Caldas	56, 61	Forrest, Alexandra	37
de Graaf, Ron	44, 54, 68	Franz, Michael	35
de Mooij, Liselotte	50	Freidl, Marion	46, 48, 49, 51
de Weerd-Zoun, Maringa	48	French, Rebecca	52
Dekker, Jack	50	Freudenthal, Erika	57
Depaigne-Loth, Anne	62	Friedrich, Fabian	46, 48, 49
Dereuddre, Rozemarijn	57	Frissa, Souci	34, 63
Desai, Roopal	49	Fuller-Tyszkiewicz, Matthew	68
Diekman, Wout	33	Gaebel, Wolfgang	16, 23
Dimitrov, Plamen	29	Gal, Gilad	42
Dingoyan, Demet	38	Gamma, Alex	60
Dinolova, Romyana	29	Ganguli, Mary	18, 40, 46
Dolman, Clare	35	Gask, Linda	58
Donisi, Valeria	61	Gäumann, Christine	68
Doran, Tim	58	Gayer-Anderson, Charlotte	30

Gazard, Billy.....	34, 37	Hinkov, Hristo.....	29
Gebel, Sophia	27	Hoffmann, Klaus	33
Gebhardt, Nina	53	Höfler, Michael,.....	28, 29
Georg, Gersende.....	62	Hölzer, Michael	66
Geyer, Siegfried	55	Holzinger, Daniel.....	65
Gibellini Manetti, Silvia	27	Hornik-Lurie, Tzipi.....	28
Gilbert, Eleanor	67	Hotopf, Matthew.....	17, 34, 36, 37, 38, 44, 45, 49, 50, 51, 57, 62, 63
Gili, Margalida	56	Howard, Louise 17, 19, 35, 45, 51, 52, 60	
Girlanda, Francesca	43	Huang, Chun-Ta	51
Glaus, Jennifer	32, 59	Hubbard, Kathryn.....	30
Glozier, Nicholas	38	Hutschinson, Iain	57
Gobet, Pierre.....	27	Isaac, Vivian.....	51
Goldberg, Sir David	20, 61, 69	Iversen, Amy	34
Goodwin, Laura	20, 36, 62, 63	Jacka, Felice	38
Gottberg, Carolin von ..	19, 46, 47, 55, 58	Jacke, Christian	32
Gradel, Cornelia	68	Jackson, Richard G.....	37, 42, 45
Grempler, Julia	48	Jacobi, Frank	17, 35, 36
Gudmundsson, Pia.....	59	Jaeger, Matthias	62
Gündel, Harald	20, 41, 66	Jaeger, Susanne.....	31, 49
Gundelfinger, Ronnie	68	Jaensch, Andrea	57
Güth, Uwe	51	Jagsch, Reinhold	47
Gutmann, Renate	68	Januszewska, Elżbieta.....	46
Guttman, Astrid	50	Januszewska, Izabella	46, 51
Hagen, Katja.....	59	Januszewski, Andrzej	46
Hagen, Katrin	38	Jarosz, Emma	45
Hahmann, Harry.....	57	Jayatilleke, Nishamali	42
Hajivandi, Abdollah	43	Jenkins, R.	41
Halling-Hastrup, Lene	31	Jeppesen, Pia	31
Hällström, Tore.....	24, 59	Jerg-Bretzke, Lucia	47
Hamann, Johannes	53	Joas, Erik	24
Hapke, Ulfert	36, 38	Johnson, Sonia	19, 28, 47, 60, 67
Hardeveld, Florian,.....	54, 59	Johnston, Caroline	42
Härter, Martin	19, 54	Jones, Ian	35
Harvey, Samuel B.	38, 41, 67	Jordanova, Vesna	18, 43, 44
Hatch, Stephani.....	17, 34, 36, 37, 44, 62, 63	Jorgensen, Per.....	31
Hawton, Keith.....	24	Juckel, Georg	55, 70
Hayes, Richard D. .	37, 42, 44, 45, 49, 50, 52	Kadra, Giuliana	42
Heath, Alexandra	57	Kao, Yu-Chen	70
Heekeren, Karsten	31	Kaplan, Mark	24
Heier, Margit.....	58	Karlsson, B.....	24
Heim, Gisela.....	27	Katschnig, Heinz	51
Heinrich, Anke,.....	29	Kawohl, Wolfram	32, 33
Heinz, Andreas.....	38	Kayahan, Bülent.....	26
Henderson, Max.....	20, 41, 62, 63	Kempton, Matthew	30
Hendriks, Sanne.....	54, 59	Khondoker, Mizan	36
Hengartner, Michael P.	32, 33, 60	Khondoker, Mizanur.....	52, 57
Hensing, Gunnel	18, 41, 67	Kiejna, Andrzej.....	38, 48
		Kiely, Kim	63, 67

Kikkert, Martijn	50	Lee, William E.	43, 44, 55
Kilian, Reinhold 15, 17, 19, 21, 22, 31, 46, 47, 49, 50, 57, 58, 66		Lerner, Yaacov	28
Killaspy, Helen	20, 61	Levav, Itzhak	42
King, Ross	68	Lewis, Daniel	64
Kingsbury, Mila	64	Licht, Carmilla	54
Kirkbride, James	64	Lieb, Roselind	45, 54, 59
Kirli, Umut	26	Lien, Yin-Ju	70
Kirschbaum, Clemens	28, 29	Lima, Maria Cristina	47
Kissling, Werner	53	Limbrecht-Ecklundt, Kerstin	47
Klauser, Mara	27	Lin, Shwu-Jon	70
Kling Lourenço, Paulo	55	Linden, Michael	56
Klosterkötter, Joachim	55	Link, Bruce	36, 53
Kluge, Ulrike	38	Linkohr, Birgit	58
Knapp, Martin	31	Linszen, Don	55
Knappe, Susanne	45	Lipp, Madeleine	42
Koch, Andrea	65	Liu, Chia-Yih	35
Koch, Uwe	38	Liu, Yia-Ping	70
Koekkoek, Bauke	53	Loh, Ching-Hui	50
Koenig, Wolfgang	57	Løkke, Knut Peter	46
König, Hans-Helmut	24	Lommerse, N.	50
Kontopantelis, Evan	58	Loos, Sabine	20, 52, 53
Korszun, Ania	57	Lopez-Morinigo, Javier	49
Korten, Nicole	25	Loureiro, Adriana	56
Kosidou, Kyriaki	64	Lu, Chien-Wen	70
Koslowski, Nadine	66	Luck, Tobias	25
Kösters, Markus..... 17, 20, 37, 63, 69		Luppa, Melanie	24, 25
Krogsgaard Bording, Malene	53	Lyne, John	33
Kroll, Lars	35	Mack, Simon	36
Kronborg, Christian	31	Madigan, Kevin	33
Krug, Isabel	45, 68	Madsen, Ida E. H.	48
Krumm, Silvia	15, 17, 21, 35	Maetzler, Walter	59
Kuehner, Christine	19, 59	Magnusson Hanson, Linda	17, 37
Kühn, Carolin	65	Magnusson, Cecilia	64
Lacruz, Elena	58	Mahlke, Candelaria	54
Ladwig, Karl-Heinz	58	Maier, Wolfgang	25
Laheij, Marianne	48	Manders, Willeke A.	54
Lakeman, Richard,	42	Mann, Anthony	18, 19, 43, 57
Lam, Kelvin	50	March, Dana	36
Lambregtse-van den Berg, Mijke ...	52	Marwaha, Steven	67
Lampert, Thomas	35	Maske, Ulrike E.	36, 38
Längle, Gerhard	31, 49	Matcham, Faith	51
Lasalvia, Antonio	30	Matschinger, Herbert... 19, 31, 46, 47, 58	
Lasserre, A.	32, 59	Matznetter, Anna	47
Lauber, Christoph	15, 21	Maughan, Daniel	25
Lavelle, Ena	20, 66	Mayer, Dorothea	66
Le Boutillier, Clair	27	Mc Manus, S.	41
Leach, Liana	67	McCormick, Marie	27
Leamy, Mary	27	McCrone, Paul	27, 31
Lebrão, Maria Lúcia	47	McDaid, David	32

McGuffin, Peter	34	O'Connell, Nicola	37
McGuire, Philip	42	Ogbogu, Irene	63
McLachlan, Craig	51	Ogden, Jack	52
McMartin, Seanna	64	Okoliyski, Michail	29
Mensik, Gert B. M.	38	Olesen, Sarah	67
MentDis_ICF65 + study group	58	Olier, Ivan	58
Metzger, Florian G.	59	Olsson, Craig	45, 68
Meyer, Benjamin	52	Olukemi, Bamibetan	63
Michel, Chantal	42, 43	Omidvari, Sepideh	55
Milton, Alyssa	67	Onay, Hüseyin	26
Min-Jung Wang, Meg	38	Onyejiaka, Adanna	30
Misiak, Blazej	38	Oram, Sian	52
Mitchell, Amy	63	Östling, Svante	24, 59
Mitchell, Sarah	68	Östman, Margareta 18, 19, 20, 42, 43, 52, 65	
Moffat, Rebecca	51	Oude Voshaar, Richard	25
Mohler-Kuo, Meichun	44, 51	Överland, Simon	41
Mojtabai, Ramin	31	Özkinay, Ferda	26
Møller, Henrik	50	Pacurar, Mariana	45
Molodynski, Andrew	19, 25, 40, 55, 56, 62	Painter, Kris	53
Molyneaux, Emma	52	Palacios, Jorge	57
Mondelli, Valeria	30	Panagiotopoulos, Christos	56
Mons, Ute	57	Papoila, Ana Luísa	61
Montazeri, Ali	55	Parchmann, Anna	53
Morandi, Stéphane	16, 27, 40	Pariante, Carmine	30
Morant, Nicola	28, 67	Park, A-La	15, 21, 22, 32
Morgan, Craig	17, 29, 30	Parsons, Nicholas	67
Moskalewicz, Jacek	38	Passalacqua, Silvia	27
Möske, Mike	38	Pasupathy, Dharmindra	52
Mounic, Vincent	62	Patel, Rashmi	42
Müller, Brigitte	68	Patterson, Paul	55
Müller, Mario	31, 32, 33	Pavlikis, Andreas	56
Munitz, Hanan	42	Penninx, Brenda	25, 54, 59
Munk-Jørgensen, Povl 15, 16, 21, 23, 46, 49		Perera, Gayan	25
Murray, Robin	30	Peter, Richard	67
Muschik, Elisabeth	27	Peters, Annette	58
Myin-Germeyns, Inez	30	Petersen, Lone	31
Mykletun, Arnstein. 17, 18, 38, 40, 44, 67		Peterson, Debbie	50
Nakov, Vladimir	29	Pfeiffer, Herbert	53
Niebler, Raphael	59	Pfennig, Andrea	65
Nolan, Fiona	28	Phelan, Jo	19, 53
Noorthoorn, Eric	62	Piotrowski, Patryk	17, 38, 48
Nordentoft, Merete	31	Planner, Claire	58
Nørgaard Kjær, Jesper	15, 22, 49	Podariu, Angela	45
Nørgreen Gustafsson, Lea	46, 49	Polling, Catherine	36
Nosè, Michela	43	Popovici, Ramona	45
Nwaopara, Uche	33	Poston, Lucilla	52
O'Donoghue, Brian	18, 33, 40	Preisig, Martin ..17, 19, 29, 32, 33, 50, 59, 60, 65	
		Priebe, Stefan	16, 23, 37

Provaznikova, Katarina.....	42	Salize, Hans Joachim..	15, 16, 21, 22, 27, 32, 65
Pruess, Susanne	50	Salokangas, Raimo K. R.	55
Puntis, Stephen	26	Santana, Paula.....	56
Purgato, Marianna.....	43	Santos, Jair Lício Ferreira	47
Puschner, Bernd....	19, 20, 47, 52, 53, 61, 65, 66	Sarfati, Diana.....	50
Querengässer, Jan.....	33	Sartorius, Norman	16, 23
Rabbi, Laura	61	Saumer, Gertraud.....	49
Rahitz, Emmylou	57	Sava-Rosianu, Ruxandra	45
Raica, Marius.....	45	Schäfer, Judith	29
Ramchandani, Paul,	34	Scheidt-Nave, Christa	36
Ramos-Cerqueira, Ana Teresa.....	47	Schepp, Wiltrud	31
Rayner, Lauren.....	51	Scherer, Martin.....	25
Reeves, David	58	Schimmelmann, Benno G.	42, 43
Reilly, Siobhan.....	58	Schneider, Tom	52
Reime, Birgit.....	20, 68	Schoevaerts, Katrien.....	33
Reininghaus, Ulrich	30	Schofield, Peter	63
Reinwald, Jonathan	47	Schomerus, Georg .	17, 30, 31, 49, 50
Reiter, Bernhard	66	Schönfeld, Sabine	28, 29
Reventlow, Heinrich Graf von.....	55	Schrank, Beate.....	53
Rhebergen, Didi.....	25	Schultze-Lutter, Frauke	42, 43
Richard, Aline	51	Schulz, Holger	19, 38, 58
Richardson, Don.....	34	Schützwohl, Matthias	20, 65, 66
Riches, Simon	53	SELCoH study team.....	34
Richter, Dirk.....	16, 27, 28	Senturk Cankorur, Vesile	45
Riedel-Heller, Steffi G..	16, 17, 19, 24, 25, 39, 46, 47, 54, 58	Shanmuganathan, Jan Walter Dhillon	46
Rieger, Monika Annemarie	66	Shannon, Stephen.....	33, 40
Rijdsdijk, Fruhling,	34	Sharer, Melissa	64
Robert, Alexandre.....	27	Sheikkhatari, Payam	18, 44
Roberts, Angus.....	18, 41, 42	Shetty, Hitesh.....	37, 42, 45, 49
Roche, Eric.....	33	Shibata, Dean.....	25
Rodgers, Stephanie.....	32, 33, 51	Sibitz, Ingrid.....	42, 51
Rodrigues Torres, Albina.....	47	Siegert, Jens	28
Rohrmann, Sabine.....	51	Sigström, Robert	24
Rose, Diana.....	20, 61	Sikorski, Claudia.....	24
Ross, Thomas	33	Silva, Manuela.....	56
Rössler, Wulf,	27, 31, 32, 33, 60	Sinclair, Julia	25
Roth, Julia.....	35	Singh, Swaran.....	67
Rothenbacher, Dietrich.....	18, 42, 57	Sinnema, Henny.....	48
Rothermund, Eva.....	66	Siribaddana, Sisira	34
Rowe, Sarah.....	34	Siriwardhana, Chesmal	64
Ruggeri, Mirella	17, 29	Sittaro, Nicola-Alexander.....	55
Rugkása, Jorun	16, 25, 26	Skoog, Ingmar.....	16, 17, 24, 39, 59
Rugulies, Reiner	48	Slade, Mike.....	27, 52, 53
Ruhrmann, Stephan,	55	Smit, Johannes (Jan)	25
Ruppelt, Friederike	54	Smith, Neil	20, 45, 64
Rüsch, Nicolas.....	19, 31, 53	Sorabji, Anisha	68
Salazzari, Damiano	30, 61	Speerforck, Sven.....	50
		Spijker, Jan.....	19, 48, 54, 59, 60

Stanley, James.....	50	Trevillion, Kylee.....	52
Stanley, Nicky.....	52	Tuithof, Marlous	44, 54, 68
Stanley, Princewill	33	Tylee, Andre.....	53, 57
Stansfeld, Stephen A. . 17, 18, 29, 40, 41, 45, 64		Udomratn, Pichet	35
Steer, Sophia.....	51	Uhle, Christian	46
Stegbauer, Constance	61	Ulaş, Halis.....	26
Stein, Alan.....	34	Unger, Annemarie.....	46, 47, 48, 49
Steinert, Tilman 17, 20, 31, 33, 48, 49, 62		Vaez, Marjan	41, 67
Stek, Max	25	Vahtera, Jussi	37
Steuden, Stanisława	51	Valmaggia, Lucia	30
Stewart, Robert 17, 18, 20, 25, 37, 39, 41, 42, 43, 44, 45, 49, 50, 52, 64		Van Bortel, Tine	30
Stiawa, Maja.....	66	Van de Straat, Vera	58
Sticker, Elisabeth.....	57	Van den Brink, Rob.....	33
Stokwizewski, Jakub.....	38	Van den Brink, Wim	44
Strang, John	44	Van der Mast, Roos	25
Strehle, Jens	36	Van Ditzhuijzen, Jenneke	54
Strippoli, Marie-Pierre.....	32, 65	Van Dorsselaer, Saskia	54, 68
Sulaiman, Ahmad Hatim	35	Van Kranenburg, Grieke	33
Sumathipala, Athula	34	Van Nijnatten, Carolus.....	54
Susan, Kehoe.....	66	Van Os, Jim	26
Süssenbacher, Stefanie	46, 48, 49	Van Ravesteyn, Leontien.....	52
Svab, Vesna.....	27	Van Veen, Mark	43
Sverke, Magnus	37	Vandeleur, Caroline	32, 59, 65
Sweeney, Angela	28	Vandenbergh, Joris.....	33
Szecsényi, Joachim.....	61	Vazqes Montez, Maria	25
Takacs, Susanne.....	46	Velikonja, Tjasa.....	30
Tansella, Michele	43	Vergunst, Francis.....	26
Tavousi, Mahmood.....	55	Verhaegh, Jan.....	55
Taylor, Clare.....	25, 52	Vicentini, Henrique.....	47
Tedeschi, Federico.....	61	Vogel, Anke.....	65
ten Have, Margreet	44, 54, 68	Vollebergh, Wilma.....	44, 54
Tharmaratnam, Vanathi	64	Vollenweider, Peter.....	59
Theodoridou, Anastasia,	31	von Wyl, Agnes	27
Theunissen, Jan	50	von Zerrsen, Detlef	60
Thomas, Jeffrey L.....	34	Voß, Elke	65
Thompson, Claire.....	64	Waeber, Gerard	59
Thornicroft, Graham	30, 31	Waern, Margda	24, 41, 59, 67
Thorup, Anne.....	31	Wagner, Fernando	44
Thurau, Christin.....	28	Wancata, Johannes	46, 48, 49
Tillin, Therese.....	25	Wang, Sheng-Chiang.....	70
Tomi, Vladimira	27	Wciórka, Jacek.....	38
Tomov, Toma	29	Wedegaertner, Felix.....	55
Topitz, Andrea	51	Weich, S.....	41
Topuzolu, Ahmet	26	Weisbrod, Matthias	49
Torres, Albina	47	Weiser, Prisca	31
Traue, Harald C.....	47	Wenzlaff, Paul	68
Trautmann, Sebastian,.....	28, 29	Werner, Amelie	65
		Wessely, Simon	34
		Westerlund, Hugo	37
		Weyerer, Siegfried	19, 24, 25, 60

White, Sarah.....	61	Wu, Chia-Yi.....	51
Wickham, Maeve.....	64	Wüsten, Bernd.....	57
Wiersma, Durk.....	33	Wykes, Til.....	30
Wiese, Birgit.....	25	Yeeles, Ksenija.....	25, 37, 40
Williams, Julie.....	27	Zachbauer, Christina.....	47
Williams, Paul.....	57	Zagozdzon, Pawel.....	37
Wirth, Thomas.....	16, 23	Zali, Nesli.....	26
Wirtz, Gustav.....	49	Zarkov, Zahari.....	29
Wittchen, Hans-Ulrich..	16, 24, 28, 29, 36, 45	Zavos, Helena.....	34
Witthauer, Cornelia.....	54	Zentner, Nadja.....	53
Wojtyniak, Bogdan.....	38	Zilber, Nelly.....	28
Woodhead, Charlotte.....	37, 63	Zimmerman, Cathy.....	52
Wrotkowska, Magdalena.....	37	Zimmermann, Peter.....	28, 29
		Zoppei, Silvia.....	30