



EUROPEAN
PSYCHIATRIC
ASSOCIATION



EPA 2018

26th

EUROPEAN
CONGRESS
OF PSYCHIATRY

CONGRESS PROGRAMME

**MENTAL HEALTH
INTEGRATE
INNOVATE
INDIVIDUALISE**

Nice, France
3-6 March 2018

www.epa-congress.org
#EPA2018





EUROPEAN
PSYCHIATRIC
ASSOCIATION

EPA 2018 DOWNLOAD THE OFFICIAL APP



NETWORK NAME:

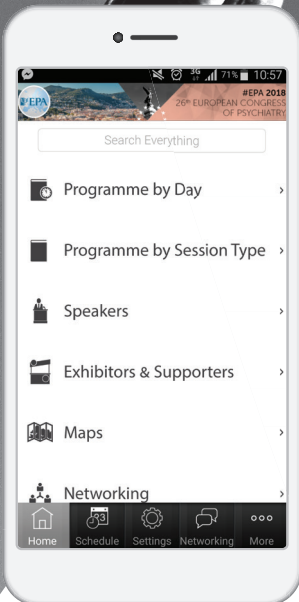
epa2018wifi

PASSWORD:

epa2018wifi

FEATURES INCLUDE:

- Network with colleagues
- Speaker presentations
- Access the programme



Download on the
App Store



GET IT ON
Google play



View on
Mobile Website



EUROPEAN
PSYCHIATRIC
ASSOCIATION

Congress
Information



EPA 2018
26th
EUROPEAN
CONGRESS
OF PSYCHIATRY

CONGRESS PROGRAMME

EPA ADMINISTRATIVE OFFICE

15, Avenue de la Liberté
67000 Strasbourg, France
Tel. + 33 3 8823 9930
Fax + 33 3 8835 2973

EPA BRUSSELS OFFICE



University Foundation
11 rue d'Egmont
1000 Brussels, Belgium
Tel. +32 2 511 02 30

CONGRESS SECRETARIAT



Kenes International Organisers
of Congresses S.A.
Rue François-Versonnex 7
1207 Geneva, Switzerland
Tel. + 41 22 908 04 88
Fax + 41 22 906 91 40
epa@kenes.com

TABLE OF CONTENTS

CONGRESS INFORMATION

Welcome Address	3
General Information	4
Congress Activities	6
EPA Forum	7
Mobile Application, Internet and WiFi	8
EPA 2018 Scientific Programme Overview	9
Information for Presenters	10
e-Posters and e-Poster Walks	11
Congress Accreditation and Certificate of Attendance	12
European Early Career Psychiatrists (EECP) Programme	14
About the European Psychiatric Association	15
EPA Prizes and Awards	17
EPA Membership	19

SCIENTIFIC PROGRAMME

Saturday, 3 March	23
Sunday, 4 March	29
Monday, 5 March	59
Tuesday, 6 March	91

INDEX OF AUTHORS 115

COMPANY AND EXHIBITION GUIDE 123

Acknowledgements	124
Industry Supported Satellite Sessions	126



WELCOME ADDRESS

Dear Colleagues,

The **26th Congress of the European Psychiatric Association (EPA)**, the largest international association of psychiatrists in Europe, will take place 3-6 March 2018 at the prestigious Nice Acropolis Convention Centre located in the city of Nice, the dynamic, cosmopolitan, unofficial capital of the Côte d'Azur.

The theme of the Congress will be **"Mental Health - Integrate, Innovate, Individualise"**.

Integrate emphasises the need to include mental health in both health and social policies; promote the integration of different approaches to mental health care and research; integrate research and mental health services focusing on different life epochs.

Innovate emphasises the importance of identifying priorities for mental health care and research; disseminating and promoting translation into standard practices of new successful prevention and intervention programmes; developing e-mental health programmes to improve service delivery and communication with users, and overcome spatial and linguistic barriers.

Individualise emphasises the current view of mental health care and research as person-centred by matching therapeutic interventions with an individual's characteristics, values and preferences.

A special focus of the Congress will be the integration of new technologies and research findings into person-centred approaches to prevention, care and training, at a time in which difficult challenges, such as displacement, war, terrorism and economic constraints, require new answers.

The Congress will bring together expert clinicians, researchers and leaders of stakeholder organisations in the field of mental health, offering an outstanding set of Plenary and State of the Art Lectures, Educational Courses, Symposia, Workshops, informal meetings with experts and sessions designed by and for early career psychiatrists.

We are confident that, like every year, the Congress will represent for all participants an unforgettable personal and professional experience, and we welcome you to Nice.



Silvana Galderisi
EPA President



Philippe Courtet
Chair of the Local Organising Committee

GENERAL INFORMATION

CONGRESS VENUE

Nice-Acropolis

Société d'Exploitation de l'ACROPOLIS de NICE

1 Esplanade Kennedy-BP 4083

06302 Nice Cedex 4, France

Telephone: +33 4 93 92 83 18, Fax: +33 4 93 92 83 48

www.nice-acropolis.com

LANGUAGE

English is the official language of the Congress.

REGISTRATION

The Registration Desk is situated on the ground floor of the Convention Centre and will operate during the following hours:

Saturday, 3 March	8:00 - 20:00
Sunday, 4 March	7:00 - 18:45
Monday, 5 March	7:30 - 18:45
Tuesday, 6 March	7:30 - 15:00

LOCAL INFORMATION

A Local Information desk situated in Agora 1, offering local city information to Congress participants will operate during the following hours: Sunday, 4 March - Tuesday, 6 March 9:00 - 15:00

EPA BOOTH OPENING HOURS

The EPA Booth is located in the Mykonos foyer, just outside of the Exhibition area (Rhodes) and will be open at the following times:

Sunday, 4 March	9:00 - 17:00
Monday, 5 March	9:00 - 17:00
Tuesday, 6 March	9:00 - 13:30

EXHIBITION OPENING HOURS

Sunday, 4 March	9:00 - 17:00
Monday, 5 March	9:00 - 17:00
Tuesday, 6 March	9:00 - 13:30

NAME BADGE

Upon registering, you will receive your name badge. Congress Delegates are required to wear their badges during all Congress sessions and events.



MOBILE PHONES

Mobile phones must be switched off or muted during all sessions.

SMOKING POLICY

Smoking is prohibited throughout the Congress venue. Please be considerate of the rules of the venue and your fellow participants.

LIABILITY AND INSURANCE

The Congress Secretariat and Organisers cannot accept liability for personal accidents or loss of or damage to private property of participants. Participants are advised not to leave their personal belongings unattended in session halls and throughout the Congress venue.

PHOTOGRAPHY AND RECORDING PRIVILEGES

No photographs, video recording or audio recording may be permitted in the scientific sessions at this Congress unless otherwise authorised by the Scientific Programme Committee or the EPA President.

GUEST ATTENDANCE POLICY

All event activities (including educational sessions, meal functions, exhibition hall, etc.) are exclusively reserved for registered attendees. Non-registered guests (including children, family members, colleagues, etc.) are not allowed in any of the event areas. Badges provided at registration are required for entrance into all functions and will be strictly enforced.

REFRESHMENTS AND BREAKS

Refreshments and lunch will be provided during the breaks in the Exhibition area. For your convenience there is a cash bar available in the Mykonos Bar area.

COMPANY AND EXHIBITION GUIDE

In accordance with compliance regulations, Industry supporting the Congress will be acknowledged separately from the Scientific Programme. Industry Information will appear at the back of the book, under the section entitled Company and Exhibition Guide.

ABSTRACTS

All accepted abstracts are published in an online supplement of the *European Psychiatry Journal* published by Elsevier. Abstract viewing is also available at the internet stations in the Exhibition Area.

CONGRESS ACTIVITIES

SATURDAY, 3 MARCH

EPA FORUM

PERSON-CENTRED HEALTH CARE: OUTCOMES THAT MATTER TO PATIENTS AND THEIR CARERS

9:00 - 13:30 | Hermès, Level 2

OPENING CEREMONY

18:30 - 20:00 | Apollon, Level 2

WELCOME RECEPTION

20:00 | Agora, Level 3

EUROPEAN EARLY CAREER PSYCHIATRISTS' NETWORKING EVENING (ticket required)

21:00 | Mykonos Area, Level 2

The EPA wishes to welcome delegates to the Congress and provide them with a valuable opportunity to meet new colleagues.

Tickets at € 15 per person are available at the Registration Desk or at the door for all registered participants.

SUNDAY, 4 MARCH

EPA EXTRAORDINARY GENERAL ASSEMBLY & ORDINARY GENERAL ASSEMBLY

18:45 | Hermès, Level 2

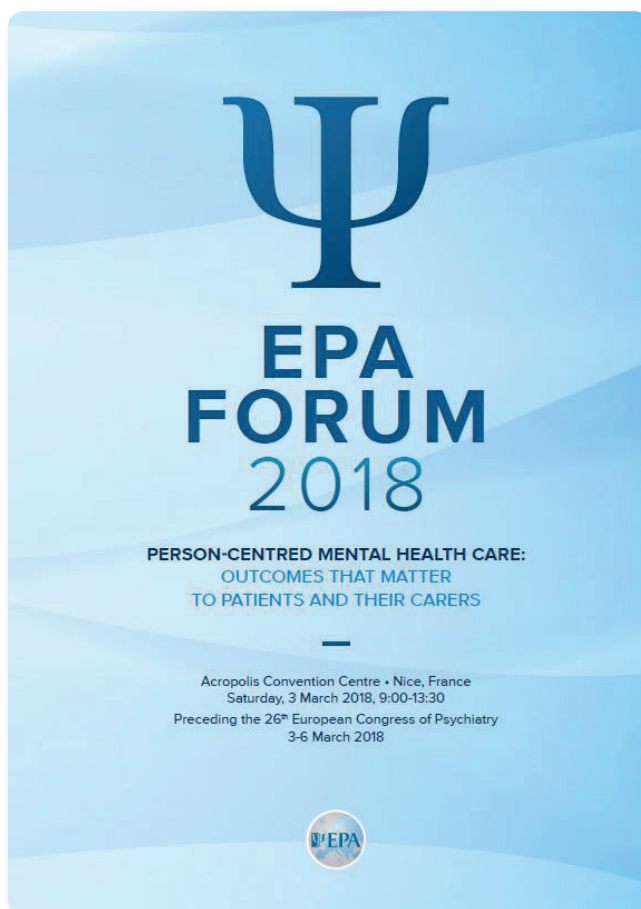
This event is reserved for EPA members.
Please collect your invitation for this event from the EPA booth in the Exhibition Area.



EPA FORUM

The 4th **EPA Forum** "*Person-centred Health Care: Outcomes that Matter to Patients and their Carers*" will take place from 9:00 - 13:30 on Saturday, 3 March 2018, followed by a light lunch. Please refer to page 23 for the full Forum programme.

First introduced in 2015, the EPA Forum will bring together EPA Council of National Psychiatric Society and Association (NPA) members, EPA Individual Members and Congress participants and European organisations, stakeholders and policy makers in the field of Mental Health and Mental Health Care to present and discuss matters of European importance from the perspective of the EPA.



MOBILE APPLICATION, INTERNET & WIFI

MOBILE APPLICATION

Download the EPA 2018 interactive mobile app to your smartphone and portable devices to access all the information you will need during and after the Congress:

- See the overview of sessions, speakers and exhibitors
- Create your own programme for the event, including bookmarking the sessions you wish to attend
- Receive real-time updates
- Follow along with the speakers by viewing their presentations in real time during the sessions*. This feature also allows you to take notes and bookmark key content.

** Valid in sessions for which the speaker has made his or her presentation available on the Congress App.*

Download the EPA App now to enhance your Congress experience!
(available on the App Store or Google Play: EPA 2018 Nice)

INTERNET AND CHARGING STATION

Internet and charging stations are located in the Exhibition Area and are available during exhibition opening hours only.

- Abstract Viewing is available at the Internet Stations.
- Electrical outlets and charging cables for most mobile phones and tablets will also be available at this station.
- A printer will be available for use of delegates during exhibition hours.
- Please do not leave your devices unattended while charging. The EPA is not responsible for items that are misplaced or stolen.

Please do be considerate of fellow participants when using these facilities.

WIFI

Free internet is available to all Congress participants in the Congress Centre.

NETWORK NAME: epa2018wifi | PASSWORD: epa2018wifi

SOCIAL MEDIA

Please Tweet about the Congress using hashtag **#EPA2018**
and username **@Euro_Psychiatry**.

PHOTO CONTEST

EPA is again holding a photo contest. Share your photos from EPA 2018 for a chance to win! Visit us on Facebook **@europsy** or Twitter **@Euro_Psychiatry** to learn more.



SCIENTIFIC PROGRAMME OVERVIEW

The EPA 2018 Scientific Programme is composed of 5 main tracks; each track is composed of a variety of Plenary and State of the Art sessions, Debates, Symposia, and Workshops:

- **Research Track** is composed of sessions with a focus on current research trends in psychiatry.
- **Clinical / Therapeutic Track** offers participants updated, state-of-the-art, clinical and therapeutic information which is based on research and linked to daily practice.
- **Educational Track** provides an update on developments in the field and the opportunity for exchange of ideas between participants and speakers.
- **European Track** deals with common issues for psychiatrists across Europe and will therefore be of particular interest for members of the National Psychiatric Societies/Associations.
- **Mental Health Policy Track** deals with principles and models for action aimed at promoting mental health.

Within each track, some sessions are part of the European Early Career Psychiatrists' Programme (EECPP). EPA invites recent graduates to participate in these sessions, which are tailored to the needs of the early career psychiatrist. The Scientific Programme will also include:

- **Oral Communications Sessions** - There are 12 Oral Communications Sessions classified by topic, in which the authors of selected outstanding abstracts will give a talk.
- **Industry Supported Sessions** - There are a number of Satellite Sessions organised by pharmaceutical companies in consultation with the Scientific Programme Committee. Learn more about the Satellite Symposia on pages 126.
- **E-Posters** - There are e-Poster viewings classified by topics, in which outstanding posters will be presented electronically. There are also 17 daily e-Poster Walk Sessions that take place during the lunch breaks.
- **Ask the Expert Sessions** - These sessions allow participants to meet in a small group with outstanding researchers and clinicians. The sessions, limited in number and taking place at round tables, are designed to facilitate informal discussion, allowing participants to present their questions and gain new perspective. Advance sign up is required.

Section Symposia, Workshops and EPA Courses

 **Session requiring pre-registration**

 **European Early Career Psychiatrists' Programme**

INFORMATION FOR PRESENTERS



PLEASE CHECK THE ONLINE INTERACTIVE PROGRAMME IN CASE OF LAST MINUTE SCHEDULING CHANGES.

SPEAKERS' READY ROOM

Saturday	8:00 - 18:30
Sunday	7:00 - 18:30
Monday	7:30 - 18:30
Tuesday	7:30 - 13:45

ORAL PRESENTATIONS

Data presentation:

If using a PowerPoint (or any other PC-based application), please note you need to bring it on a USB Memory stick and load it on one of the Congress' computers in the Speakers' Ready Room at least 1 hour before the start of the session.

If combining video films with PowerPoint, please make sure to check it in the session hall where your lecture is taking place during a coffee or lunch break prior to your session, at least 30 minutes before the start of the session - **even after checking it in the Speakers' Ready Room.**



PLEASE NOTE THAT THE COMPUTERS IN THE SESSION HALLS WILL BE USING MICROSOFT OFFICE 2016.

Alternatively, you may supply your own laptop computer. In such a case, please confirm that it has a VGA socket for external signal, and have it checked in the Speakers' Ready Room as soon as you arrive. We also strongly recommend that you test your computer in the session hall where your lecture will take place during the coffee or lunch break prior to your session (at least 30 minutes before).



THIS YEAR SPEAKERS' PRESENTATIONS WILL ALSO BE AVAILABLE THROUGH THE CONGRESS APP.

SPEAKERS WHO HAVE NOT ALREADY UPLOADED THEIR PRESENTATIONS MAY DO SO IN THE SPEAKERS' READY ROOM.

PRESENTATIONS WILL LATER APPEAR IN THE APP, WHICH IS UPDATED ONCE A DAY, AND ARE AVAILABLE FOR VIEWING TO ALL CONGRESS DELEGATES.



Important note for Mac users

In order to use Mac presentations on a PC-compatible computer please note that you need to prepare it according to the instructions below, before bringing it to the Speakers' Ready Room:

- Use a common font, such as Arial, Times New Roman, Verdana etc. (special fonts might be changed to a default font within a PC-based PowerPoint presentation).
- Insert pictures as JPG files (and not TIF, PNG or PICT - these images will not be visible within a PC-based PowerPoint presentation).
- Use a common movie format, such as AVI and WMV (MOV files from QuickTime will not be visible within a PC-based PowerPoint presentation).

Alternatively, you may use your own Mac laptop computer. In this case, you will need to provide a VGA adapter for external signal, and have it checked in the Speakers' Ready Room as soon as you arrive. We also strongly recommend that you test your computer in the session hall where your lecture will take place during the coffee or lunch break prior to your session (at least 30 minutes before).



PLEASE NOTE: IN COMPLIANCE WITH EACCME REQUIREMENTS ALL SPEAKERS ARE REQUESTED TO INCLUDE A SLIDE DISCLOSING CONFLICTS OF INTEREST AT THE BEGINNING OF HIS OR HER PRESENTATION.

E-POSTERS

Participants and members will be granted access to an advanced e-Poster platform, which provides user-friendly access to all posters online, during and after the Congress. The platform allows users to browse by e-Poster section and features educational tools such as searching for specific content, commenting on posters and directing questions to the authors. When permitted by the authors, posters will be available for download in PDF format. E-Poster viewing stations will be available at the e-Poster Area in the Exhibition Area, located in the poster area, located in Agora 2 on level 2.

If you have not submitted your e-Poster prior to the Congress via the online system, please bring it on a USB key to the e-Poster Helpdesk at the Congress venue.

E-POSTER WALKS

There are 17 e-Poster Walks scheduled on Sunday, Monday and Tuesday. Each e-Poster Walk station will feature approximately 20 e-Posters. All e-Poster Walks will take place in the e-Poster Area during the lunch breaks.

CONGRESS ACCREDITATION AND CERTIFICATE OF ATTENDANCE

EUROPEAN ACCREDITATION COUNCIL FOR CONTINUING MEDICAL EDUCATION (UEMS/EACCME)

An application has been submitted to the UEMS-EACCME® for CME accreditation of this event. The EACCME is an institution of the European Union of Medical Specialists (UEMS): www.uems.net

AMERICAN MEDICAL ASSOCIATION (AMA)

Through an agreement between the European Union of Medical Specialists and the American Medical Association, physicians may convert EACCME credits to an equivalent number of AMA PRA Category 1 Credits™. Information on the process to convert EACCME credit to AMA credit can be found at www.ama-assn.org/go/internationalcme.

ROYAL COLLEGE OF PHYSICIANS AND SURGEONS OF CANADA

Live educational activities, occurring outside of Canada, recognized by the UEMS-EACCME for ECMEC credits are deemed to be Accredited Group Learning Activities (Section 1) as defined by the Maintenance of Certification Program of The Royal College of Physicians and Surgeons of Canada. For more information, visit: www.royalcollege.ca.

CREDIT BREAKDOWN

Each participant should claim only those hours of credit that he/she actually spent in the educational activity.

Day	Maximum Credits
Saturday, 3 March 2018	3
Sunday, 4 March 2018	6
Monday, 5 March 2018	6
Tuesday, 6 March 2018	5
Total Credits:	20



TO RECEIVE YOUR CME/CPD CERTIFICATE

The CME/CPD certificate will be available after completing the online evaluation and credit claiming procedure. The process takes about 5 minutes. We thank you for your feedback as it is an important part of CME/CPD accreditation and helps improve future educational offerings. Before April 3, 2018:

1. Access the online system via any of the following:
 - Visit the following link: www.surveymonkey.com/r/EPA2018Evaluation
 - Please note that web browsers Mozilla Firefox 2.X or higher, or Google Chrome are recommended
 - Visit the CME/CPD Accreditation page on the event website
 - Follow the link in the email sent at the end of the event
2. Complete the online evaluation and obtain your CME certificate to download and/or print your files.

DISCLOSURE AND RESOLUTION OF PERSONAL CONFLICTS OF INTEREST

In accordance with CME/CPD accreditation criteria and standards for commercial support to ensure balance, independence, objectivity, and scientific rigor, those in control of the educational content must disclose potential or actual conflicts of interest. Disclosure information is evaluated and conflicts of interest resolved. Disclosure is made to participants prior to the activity. Participants will be asked on the evaluation to assess the objectivity and independence of the event.

- Disclosure information is available on the Congress website and also posted on the notice board in the registration area.

EPA COURSES

EPA Courses will be held throughout the Congress, and pre-registration is required. EPA members can register for 2 courses for the price of 1. Please contact the Registration Desk for additional information regarding the availability of courses and registration. Participants are requested to present their Course ticket at the entrance of the appropriate hall.

ACCREDITATION

The EPA Courses are accredited within the accreditation of the 26th European Congress of Psychiatry EPA 2018. EPA Courses are designated for a maximum of, or up to, 3 European CME credits (ECMEC) per course. These are to be claimed within the total number of CME credits claimed for EPA 2018, while respecting the maximum number of credits per day.

CERTIFICATE OF ATTENDANCE AT COURSES

Certificate of Attendance for the Courses will be available after the Congress. A survey link will be sent to course participants. After completing the survey, you may claim your certificate electronically.

EUROPEAN EARLY CAREER PSYCHIATRISTS' PROGRAMME

The European Early Career Psychiatrists' (EECP) Lounge is situated in the Mykonos bar area on level 2 and is dedicated to Early Career Psychiatrists and Trainees, offering the opportunity for networking.

The Lounge will be open at the following times:

Sunday	7:00 - 18:30
Monday	7:30 - 18:30
Tuesday	7:30 - 13:45

All EECP sessions take place in the Clio hall on level 3.

EECP PROGRAMME

SUNDAY, 4 MARCH 2018

- 8:00 - 9:30 Symposium: How to organise acute psychiatric care?
- 15:00 - 16:30 Symposium: Internet, smart phones and mental health apps - what is their role in Psychiatry?
- 17:00 - 18:30 Training Workshop: Psychotherapy for patients with eating disorders: what works?

MONDAY, 5 MARCH 2018

- 8:00 - 9:30 Panel: How can psychiatry contribute to the promotion of human rights of people with mental health problems?
- 8:00 - 9:30 Training Workshop: Perinatal psychiatry for beginners
- 10:00 - 11:30 EFPT/ ECPC Symposium: European Psychiatric Trainees' Research Projects: Key findings
- 17:00 - 18:30 Court Debate: Choose your career wisely: academia and/or clinical practice?

TUESDAY, 6 MARCH 2018

- 8:00 - 9:30 Symposium: Prevention of mental health disorders
- 10:00 - 11:30 Training Workshop: Sexual psychotherapy



ABOUT THE EUROPEAN PSYCHIATRIC ASSOCIATION

With active individual members in as many as 88 countries and 42 National Psychiatric Association Members that represent more than 80,000 European psychiatrists, the European Psychiatric Association is the main association representing psychiatry in Europe. The EPA's activities address the interests of psychiatrists in academia, research and practice throughout all stages of career development.

The EPA deals with psychiatry and its related disciplines and it focuses on the improvement of care for the mentally ill as well as on the development of professional excellence.

MISSION

The mission of the EPA is to improve Psychiatry and Mental Health Care in Europe.

HISTORY

The EPA was founded in October 1983 in the library of the Psychiatric Clinic of the University Hospitals of Strasbourg. The founding members were twelve French- and German-speaking university psychiatrists: Professor Manfred Ackenhil † (Munich), Professor Peter Berner † (Vienna), Professor Daniel Bobon † (Liège), Professor Horst Dilling (Lübeck), Professor Henri Dufour † (Marseille), Professor Hans Heimann † (Tübingen), Professor Hans Hippus (Munich), Professor Michel Patris (Strasbourg), Professor Pierre Pichot (Paris), Professor Charles Pull (Luxembourg), Professor Werner Rein (Tübingen) and Professor Léonard Singer † (Strasbourg). The association was then given the name "Association of European Psychiatrists (AEP)".

The objective of the AEP founding members was to establish an association of French and German Psychiatrists that would promote European Psychiatry in the fields of research, treatment and teaching, three axes considered to be unequivocally complementary.

Another objective was to establish an association of psychiatrists that would act as a privileged mediator between practitioners, official councils and public authorities on matters relating to mental health policies. In the mind of its founding members, this Franco-German Association was to be the first step towards the creation of an association gathering psychiatrists from all European countries.

In order to reach these goals, the AEP gradually set up the organisation of the annual European Congress of Psychiatry, as well as other regular scientific meetings, the publication of a scientific international journal, the awarding of research grants and the

creation of sections as working groups corresponding to sub-disciplines in psychiatry. Since its foundation and the inaugural symposium held in May 1984, the number of AEP members had been growing steadily and its extension to all member states of the Council of Europe proceeded rapidly. As a consequence, in February 1989 the AEP was granted a consultant status at the Council of Europe, followed by a participatory status in 2003.

Strasbourg was selected as the seat of the association, a choice derived from political, cultural and scientific reasons: Strasbourg is the seat of numerous international and European institutions, is situated at the centre of Europe, and is the university centre where the long-prevailing French and German psychiatric schools blended.

In 2008, the Extraordinary General Assembly brought about important changes to the association's statutes and future. A notable evolution applies to the new name of the organisation, called the "European Psychiatric Association" (EPA) from then on. This change was well motivated by the wish to be in harmony with the name of its European and international partners, as also with the title of its European Congress.

Another major achievement was inspired by the interest of the association in increasing its cooperation with National Psychiatric Associations. For this reason, the EPA changed its statutes in 2012 and offers now the possibility to National Psychiatric Associations to become full members, while still preserving the possibility of individual membership.

The EPA is the most visible psychiatric association in Europe, basing its growth on the development of collaborative projects with other major psychiatric and neurological organisations, such as the European College of Neuro-Psychopharmacology (ECNP), the European Brain Council (EBC) and the European Union of Medical Specialists (UEMS), as well as patient and carer organisations such as GAMIAN and EUFAMI.

For more information on EPA, visit www.europsy.net.

Please consult the EPA 2018 Mobile Application for further information on:

- EPA Committees
- EPA Sections
- EPA National Psychiatric Association Members
- EPA Administrative Meetings and EPA Section Meetings



EPA PRIZES AND AWARDS

One of the EPA's missions is to accompany Early Career Psychiatrists in their professional development. The Association proposes a panel of grants and prizes. The European Psychiatric Association is delighted to award the following prizes at the 26th European Congress of Psychiatry. The Award Ceremony will take place during the Opening Ceremony on Saturday, 3 March at 18:30 in the Apollon hall.

2018 EPA CONSTANCE PASCAL – HELEN BOYLE PRIZE FOR OUTSTANDING ACHIEVEMENT BY A WOMAN IN WORKING TO IMPROVE MENTAL HEALTH CARE IN EUROPE

The EPA is launching this prestigious prize for the first time in 2018 as a new initiative that aims to publicly acknowledge and increase awareness of the outstanding achievements by women working to improve mental health care in Europe.

The prize is named in honour of Dr Helen Boyle, an Irish-British psychiatrist who was the first female President of the Medico-Psychological Association (later to become the Royal College of Psychiatrists), and Dr Constance Pascal, a Romanian doctor who was the first woman to qualify as a psychiatrist in France.



Laureate for 2018:

Professor Anita Riecher-Rössler, *Switzerland*

2018 RESEARCH PRIZE WINNERS

Five Research Prizes of € 2,000 each to Early Career Psychiatrists working in Europe, who published the best scientific papers in 2017, have been awarded to:

Category 1: Clinical Psychopathology and Refinement of Psychiatric Diagnostic Categories

Ian Kelleher (Ireland)

"Hallucinations in borderline personality disorder and common mental disorders"

Category 2: Biological Correlates and Treatments of Mental Disorders

Anya Topiwala (UK)

"Moderate alcohol consumption as risk factor for adverse brain outcomes and cognitive decline: longitudinal cohort study"

Category 3: Psychiatric Epidemiology, Social Psychiatry and Psychotherapeutic Interventions in Mental Disorders

Gustav Brander (Sweden)

"Perinatal risk factors in Tourette's and chronic tic disorders: a total population sibling comparison study"

Category 4: Child and Adolescent Psychiatry

Gisela Sugranyes (Spain)

"Clinical, Cognitive, and Neuroimaging Evidence of a Neurodevelopmental Continuum in Offspring of Proband With Schizophrenia and Bipolar Disorder"

Category 5: Best paper published in European Psychiatry

Gaia Sampogna (Italy)

"The impact of social marketing campaigns on reducing mental health stigma: Results from the 2009–2014 Time to Change programme"

2018 SCHOLARSHIP PROGRAMME FOR EARLY CAREER PSYCHIATRISTS & TRAINEES

The EPA Scholarship Programme provides a special grant including free Congress entrance to the European Congress of Psychiatry, travel expenses, hotel accommodation, complimentary registration for one EPA Course, invitation to Early Career Psychiatrists Luncheon and free EPA membership in 2018. The scholarship is available for early career psychiatrists who are either trainees or within 5 years of completion of specialist training in psychiatry and who are working in countries that form part of the World Health Organization Europe region.

The 2018 Scholarship Programme winners are:

Britta Galling, Germany

Tove Mogren, Sweden

Victor Pereira Sanchez, Spain

Ilia Fedotov, Russia

Milica Borovcanin, Serbia



EUROPEAN
PSYCHIATRIC
ASSOCIATION

JOIN EPA FOR ONLY € 100 ANNUAL FEE

To become an individual member of the EPA, you are invited to complete an application form on the EPA website: www.europsy.net/join-us.

THE ADVANTAGES OF EPA MEMBERSHIP:

LEARN

Keep informed about the latest scientific research and treatments

NETWORK

Integrate the network of European practitioners and researchers in Psychiatry

CONTRIBUTE

Get involved in the association and take an active part in the development of Psychiatry in Europe

ADVANCE

Accelerate your career and professional development

INFLUENCE

Have a voice and a role in shaping the future of the profession

MEMBER BENEFITS:

- Free electronic subscription to *European Psychiatry* journal
- Discounted registration fees for the annual European Congress of Psychiatry
- Preferential prices for EPA Courses
- An invitation to EPA General Assembly and right to vote (depending on membership category)
- Access to the EPA Extranet and member directory
- An invitation to join 21 scientific Sections
- Free monthly subscription to the EPA Minds Online newsletter

FIND OUT MORE AT:
WWW.EUROPSY.NET



JOIN US ON SOCIAL MEDIA

MENTAL HEALTH
INTEGRATE
INNOVATE
INDIVIDUALISE

Follow EPA's
LinkedIn page to
access
exclusive
content, learn
about EPA
activities,
exchange
knowledge and
network with
colleagues
around
the globe.

#EPA2018



EUROPEAN
PSYCHIATRIC
ASSOCIATION

Scientific Programme
Saturday, 3 March 2018

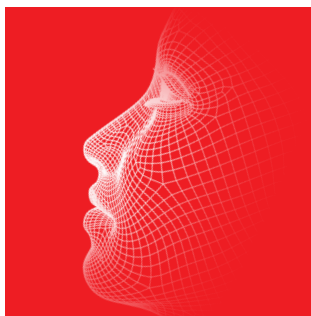
EPA 2018
26th
EUROPEAN
CONGRESS
OF PSYCHIATRY

SCIENTIFIC
PROGRAMME

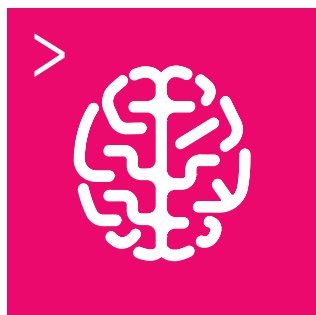
SATURDAY,
3 MARCH 2018



WORLD
PSYCHIATRIC
ASSOCIATION



PSYCHIATRY:
STANDING FIRM
FOR MENTAL
HEALTH



In partnership with:



Supported by:



18TH WPA WORLD CONGRESS OF PSYCHIATRY MEXICO CITY, 27-30 SEPTEMBER, 2018

www.wcp-congress.com

**SUBMIT ABSTRACT
& REGISTER NOW**





SCIENTIFIC PROGRAMME SATURDAY, 3 MARCH 2018

Scientific Programme
Saturday, 3 March 2018

9:00 - 13:30

Hermès

EPA Forum: Person-centred Mental Health Care: Outcomes That Matter to Patients and Their Carers

- 9:00 **Welcome and Introduction**
- [Measuring Quality Outcomes of Person-centred Mental Health Care](#)
 Chair: S. Galderisi
- 9:15 **The Importance of User-Reported Indicators of Health System Performance**
 N. Klazinga
- 9:35 **Measuring Users' Reported Outcome to Improve Their Lives**
 A. Netten
- 9:55 **Integrating Shared Decision Making and Users' Reported Outcome Measures**
 B. Puschner
- 10:15 **Discussion from the Main Stakeholders:**
- The Point of View of the Professionals Working with Policymakers, Patients and Families**
 Helen Herrman (*WPA*)
- The Point of View of Users**
 H. Kärkkäinen (*GAMIAN*)
- The Point of View of the Families**
 M. Männikkö (*EUFAMI*)
- 11:00 **General Discussion**
- 11:15 **Coffee Break**

Challenges in the Implementation of Patient-centred
Research and Care

Chair: P. Gorwood

11:30 **The Role of Digitisation to Support Person-centred Mental
Healthcare in Europe**

T. Peetso

11:45 **Improving the Value From Health Spending: The Case of
Mental Health**

M. Tinelli

12:00 **Translating Academic Research into Novel Value-based
Methodologies and Services**

I. Silva

12:15 **The Outcome Measurement Programme in the
Netherlands: What Can We Learn**

C. Nas

12:30 **Discussion**

The Role of the EPA and National Psychiatric Associations

Chair: W. Gaebel

12:45 **EPA President**

Silvana Galderisi

13:00 **Chairperson of the EPA Council of NPAs**

T. Kurimay

13:15 **General Discussion**

W. Gaebel

13:30 - 14:30 **EPA Forum Lunch**



14:45 - 18:15



Galliéni 4

EPA Course 1:

ADHD in Adults: Etiology, Clinical Picture, Diagnostic Process and Multimodal Treatment

E. Sobanski (*Germany*)
P. Asherson (*United Kingdom*)
J.A. Ramos-Quiroga (*Spain*)

14:45 - 18:15



Galliéni 5

EPA Course 2:

An Introduction to CBT for Psychiatrists

S. Moorey (*United Kingdom*)

14:45 - 18:15



Galliéni 7

EPA Course 3:

Depression in the Elderly

G. Stoppe (*Switzerland*)

14:45 - 18:15



Galliéni 1

EPA Course 4:

Forcibly Displaced People and Mental Health: Basic Knowledge and Skills for Psychiatrists/Mental Health Workers

L. Küey (*Turkey*)
M. Carisius Kastrup (*Denmark*)
M. Schouler-Oçak (*Germany*)

14:45 - 18:15



Risso 6C

EPA Course 5:

How to Manage Delirium in the General Hospital

- A. Diefenbacher (*Germany*)
- D. Georgescu (*Switzerland*)
- A. Barbosa (*Portugal*)

14:45 - 18:15



Risso 7B

EPA Course 6:

Leadership Skills in Psychiatry

- D. Bhugra (*United Kingdom*)
- A. Ventriglio (*Italy*)

14:45 - 18:15



Risso 7A

EPA Course 7:

Screening Cognitive Impairments in Psychosis Using the Cognitive Assessment Interview

- J. Ventura (*USA*)
- A. Mucci (*Italy*)

14:45 - 18:15



Risso 6A

EPA Course 8:

Successful Publication in *European Psychiatry*, the Official Journal of the EPA

- R. Heun (*United Kingdom*)
- S. Frangou (*USA*)
- A. Fiorillo (*Italy*)



EUROPEAN
PSYCHIATRIC
ASSOCIATION



EPA 2018
26th
EUROPEAN
CONGRESS
OF PSYCHIATRY

Scientific Programme
Sunday, 4 March 2018

SCIENTIFIC
PROGRAMME

SUNDAY,
4 MARCH 2018





SCIENTIFIC PROGRAMME SUNDAY, 4 MARCH 2018

8:00 - 9:30

Apollon

Symposium:

Cyberbullying, Cybersuicide and Novel Psychoactive Substances: Mental Health Needs in Young People

Chairs: U. Schmidt (*United Kingdom*)

M. Rojnic Kuzman (*Croatia*)

- 8:00 **Cyberbullying: A New Challenge for Mental Health Care**
A. Fiorillo (*Italy*)
- 8:20 **Cybersuicide in Young People: Implications for Suicide Prevention**
D. Wasserman (*Sweden*)
- 8:40 **The Role of Novel Psychoactive Substances on Young People Mental Health**
F. Schifano (*United Kingdom*)
- 9:00 **Youth Space and Youth Mental Health**
M. Birchwood (*United Kingdom*)
- 9:20 **Discussion**

Scientific Programme
Sunday, 4 March 2018

8:00 - 9:30

Athena

Symposium:

ADHD and Addiction, Towards a Consensus

Chairs: G. Dom (*Belgium*)
M. Musalek (*Austria*)

- 8:00 **Epidemiology of ADHD and SUD**
M. Clerici (*Italy*)
- 8:20 **Concept of Comorbidity on ADHD and SUD**
W. Van den Brink (*The Netherlands*)
- 8:40 **International Statement On ADHD in Patients with SUD**
C.L. Crunelle (*Belgium*)
- 9:00 **Treatment of ADHD in Patients with SUDs: New Evidences**
F. Matthys (*Belgium*)
- 9:20 **Discussion**

8:00 - 9:30

EECP

Clio

EECP Symposium:

How to Organise Acute Psychiatric Care?

Chairs: G. Lydall (*United Kingdom*)
C. Hanon (*France*)

- 8:00 **Acute Interventions in Psychosis**
P. McGorry (*Australia*)
- 8:20 **Rapid Crisis Response Team (ERIC) in France**
L. Zeltner (*France*)
- 8:40 **Patient Controlled Hospital Admissions**
C. Torgaard Thomsen (*Denmark*)
- 9:00 **Integrated or Functional Model of Care?**
D. Giacco (*United Kingdom*)
- 9:20 **Discussion**



8:00 - 9:30

Thalie

Workshop:

Asylum Seeker and Refugee Mental Health: Training Needs of Psychiatrists

Chairs: E. Sönmez (*Turkey*)
M. Schouler-Oçak (*Germany*)

- 8:00 **Introduction**
M. Schouler-Oçak (*Germany*)
- 8:10 **Developing Training for Psychiatrists Treating Refugees:
Some Reflections**
M. Hermans (*Belgium*)
- 8:20 **Forced Displacement: A Challenge for Psychiatry
Residency Programmes**
L. Küey (*Turkey*)
- 8:30 **Psychiatry Across Borders: Insights From EFPT's Survey On
Training Needs**
I. Frankova (*Ukraine*)
- 8:40 **Mental Health Needs in Immigration Removal Centres**
P. Pushkar (*United Kingdom*)
- 8:50 **Reflections From the UK'S Global Health Curriculum Group**
H. Ryland (*United Kingdom*)
- 9:00 **Discussion**

Scientific Programme
Sunday, 4 March 2018

8:00 - 9:30

Erato

Workshop:

E-Mental Health Innovations and Their Implementation in Europe

Chairs: O. Vlijter (*The Netherlands*)
W. Gaebel (*Germany*)

8:00 **Introduction to the Field of e-Mental Health and the eMen Interreg Project**

O. Vlijter (*The Netherlands*)

8:20 **eMen – Focus On Transnational Policy Solutions**

W. Gaebel (*Germany*)

8:40 **E-mental Health Products – State of the Art**

H. Riper (*The Netherlands*)

9:00 **Experiences from Ireland**

S. McDaid (*Ireland*)

9:20 **Discussion**

8:00 - 9:30

Euterpe

International Joint Symposium:

E-Mental Health in Different Continents: Challenges and Opportunities

Chairs: S. Galderisi (*Italy*)
H. Herrman (*Australia*)

8:00 **Asian Federation of Psychiatric Association**

A. Javed (*Pakistan*)

8:20 **African Association of Psychiatrists and Allied Professions**

A. Abdelrahman (*Sudan*)

8:40 **Latin American Psychiatric Association**

R. Cordova (*Colombia*)

9:00 **Discussion**



8:00 - 9:30

Hermès

Workshop:

Gene, Environment and Risk Factors for Psychosis in Migrants and Ethnic Minorities: Results from the EU-GEI Project

Chairs: C. Morgan (*United Kingdom*)

R. Murray (*United Kingdom*)

- 8:00 **Environmental Risk Factors of Attenuated Psychosis in Migrants and General Population**
A. Tortelli (*France*)
- 8:15 **The Effect of CANNABIS and Ethnicity in the EUGEI First Episode Psychosis Study**
D. Quattrone (*Italy*)
- 8:30 **Mind the Gender Gap! Variation in Risk for Psychotic Disorders Among Male and Female Immigrants**
E. van der Ven (*The Netherlands*)
- 8:45 **Migration History and Risk of Psychosis in the EUGEI First Episode Psychosis Study**
I. Tarricone (*Italy*)
- 9:00 **Minority Status and Psychosis: A Comparison of Group Density Effects**
P. Schofield (*United Kingdom*)
- 9:15 **Discussion**

Scientific Programme
Sunday, 4 March 2018

8:00 - 9:30

Calliope

Symposium:

Resilience and Recovery in People with Chronic Psychiatric Disorders

Chairs: I.T. Graef-Calliess (*Germany*)

R. Borbé (*Germany*)

8:00 **Are We Neglecting the Most Needy Patients Again? An European Perspective on Care for Patients With Chronic Disorders**

S. Priebe (*United Kingdom*)

8:20 **Chances and Challenges of Working in Partnership With Users and Family Carers**

M. Amering (*Austria*)

8:40 **Providing Care for People With Severe Mental Illness: What Should the Research Focus Be?**

R. Borbé (*Germany*)

9:00 **Positive Courses of Severe Chronic Psychiatric Disorders First Results of a Longitudinal Mixed-methods Matched Pairs Design**

J. Krieger (*Germany*)

9:20 **Discussion**

8:00 - 11:30



Risso 6C

EPA Course 9:

The Pharmacological Management of Mood Disorders and Psychosis in Pregnancy and Lactation

A. Wieck (*United Kingdom*)

8:00 - 11:30



Risso 6A

EPA Course 10:

Management and Treatment of Suicidal Patients

V. Carli (*Sweden*)

M. Sarchiapone (*Italy*)



8:00 - 11:30



Risso 7B

EPA Course 11:

**Non Invasive Brain Stimulation Methods (RTMS – TDCS):
From Scientific Data to Practical Aspects**

E. Poulet (*France*)
C. Baeken (*Belgium*)
F. Padberg (*Germany*)

9:30 - 10:00

Exhibition

Coffee Break, e-Poster Viewing and Visit the Exhibition

10:00 - 11:30

Apollon

Presidential Symposium:

Vulnerable People in Humanitarian Emergencies

Chairs: S. Galderisi (*Italy*)
H. Herrman (*Australia*)

- 10:00 **Humanitarian Emergencies and Mental Health**
 S. Galderisi (*Italy*)
- 10:20 **Empowering Women and Girls in Humanitarian Emergencies**
 M. Amering (*Austria*)
- 10:40 **Preventing Suicide in Women and Girls in Humanitarian
Emergencies**
 D. Wasserman (*Sweden*)
- 11:00 **The WPA Programme for Strengthening the Contribution
and Availability of Psychiatrists in Situations of Conflict and
Emergency**
 H. Herrman (*Australia*)
- 11:20 **Discussion**

Scientific Programme
Sunday, 4 March 2018

10:00 - 11:30

Athena

Symposium:

The Relationship Between Metabolism, Brain and Behaviour: A Lifecourse Perspective

Chairs: N. Micali (*United Kingdom*)

S. Frangou (*USA*)

- 10:00 **The Association Between Adiposity and Resting-state Connectivity From the Human Connectome Project**
G. Doucet (*USA*)
- 10:20 **Adiposity and Metabolic Biomarkers Index Predisposition for Eating Disorders**
N. Micali (*United Kingdom*)
- 10:40 **Gestational Diabetes and Maternal Adiposity and Risk for Psychotic Symptoms in Adolescence**
S. Zammit (*United Kingdom*)
- 11:00 **Bidirectional Associations Between Obesity and Depression in Childhood and Adolescence**
Y. Muhlig (*Germany*)
- 11:20 **Discussion**

Oral Communications 1:

Anxiety Disorders and Somatoform Disorders Part I / Neuroscience in Psychiatry Part I

- 10:00 **Is There a Vicious Circle During Smoking Cessation Process: Do Anxiety and Depression Decrease Abstinence Rates and, in Reverse, Low Abstinence Increase Anxiety and Depression?**
J. Fernández de Bobadilla (*Spain*)
- 10:06 **Functioning and Quality of Life in Bipolar Disorder: How Are They Correlated? An Observational Study**
C. Girod (*France*)
- 10:13 **The Effects of Cilostazol on the Monoamine Transporter, Which is Known as Cellular Target of Antidepressants**
H. Itoh (*Japan*)
- 10:20 **Anxiety Disorders and Differentiation of Self**
J. Lampis (*Italy*)
- 10:27 **Duloxetine Augmentation in Resistant Obsessive Compulsive Disorder: A Double Blind Controlled Clinical Trial**
A. Mowla (*Iran*)
- 10:34 **Increased Methylation at SLC6A4 Gene is Associated with Somatization Symptoms in Women but not in Men: A Sex-specific Effect Identified in a Non-clinical Sample**
H. Palma-Gudiel (*Spain*)
- 10:41 **Acute Cardiovascular Risk in General Population with Anxiety in Russia / Siberia: Gender Features. A WHO Programme Monica-Psychosocial Study**
D. Panov (*Russia*)
- 10:48 **Prenatal Hypercortisolemia Alters the Course of Neuronal Maturation of Hippocampal Neurons and Anxiety-Like Behaviour in the Rat**
J.R. Pascual (*Chile*)
- 10:55 **Comparative and Additive Benefits of Cognitive Restructuring Versus Exposure-Only Treatment in Anxiety: A longitudinal Multilevel Meta-Analysis on Symptom Relapse**
I. Podina (*Romania*)

- 11:02 **Unraveling the neural circuit mechanism for treatment of fear disorders via alternating bilateral sensory stimulation in mice**
H. Shin (*South Korea*)
- 11:09 **Adjunctive Risperidone for Posttraumatic Stress Disorder: A Systematic Review and Meta-analysis**
S. Suttajit (*Thailand*)
- 11:16 **Generalized Anxiety Disorder in Urban China: Prevalence, Awareness, and Humanistic and Economic Burden**
W. Yu (*China*)
- 11:23 **The Effects of Psilocybin On Brain EEG Activity and Connectivity in Healthy Volunteers – Focus on the Dynamics of the Psychedelic State**
T. Palenicek (*Czech Republic*)

10:00 - 11:30



Erato

Workshop:

Suicide, Assisted Suicide and Euthanasia in the Elderly

Chairs: G. Stoppe (*Switzerland*)
P. Zeppegno (*Italy*)

- 10:00 **"Life is Pleasant. Death is Peaceful. It's the Transition That's Troublesome" (Isaac Asimov): The Elderly and Suicide**
P. Zeppegno (*Italy*)
- 10:15 **Suicide Prevention and Prevention of Assisted Suicide in Switzerland**
G. Stoppe (*Switzerland*)
- 10:30 **Assisted Suicide and Second Opinion Requests for Euthanasia in Elderly Patients With Concomitant Psychiatric and Somatic Disorders. A Case Series**
C. van der Feltz Cornelis (*The Netherlands*)
- 10:45 **Psychoanalytic Perspectives of Suicide in the Elderly**
R. Lindner (*Germany*)
- 11:00 **Discussion**



10:00 - 11:30

Uranie

Oral Communications 2:

Bipolar Disorder

- 10:00 **Ventral Striatal Activity During Win Anticipation: A Comparison Between Euthymic Bipolar Type II and Unipolar Patients**
E. Allauze (*France*)
- 10:05 **Differential Patterns of Psychotropic Prescription in Bipolar I and II Disorder Among European and American Patients Not in a Syndromal Episode**
C. Arici (*Italy*)
- 10:10 **Prague Bipolar Offspring Study: Psychopathological, Neuropsychological and QEEG Correlates**
M. Brunovsky (*Czech Republic*)
- 10:15 **Relationship Between Childhood Adversity and Impulsivity in Major Depression and Bipolar Types I and II**
T. Cassis (*Canada*)
- 10:20 **Evaluation of a Cognitive Remediation Programme, Specific of Working Memory, in Bipolar Patients with Memory Complaints**
F. Coppola (*France*)
- 10:25 **Lithium-associated Tremor: Prevalence, Associated Factors and Clinical Consequences.**
M. Dias Alves (*France*)
- 10:30 **Development of a System for Safe Monitoring of Mood Stabilizing Treatment in Remote Rugged Areas**
J. Eberhard (*United Kingdom*)
- 10:35 **Facial Emotion Recognition in Bipolar Disorder**
U. Espinos (*Spain*)
- 10:40 **Effect of Lurasidone on Cognition in Children and Adolescents with Bipolar Depression: A 6-month Interim Analysis of a 2-year Open-label Extension Study**
R. Goldman (*USA*)

Scientific Programme
Sunday, 4 March 2018

- 10:45 **Symptom Improvement Associated with Lurasidone Treatment of Children and Adolescents with Bipolar I Depression: Results of a Short-term Placebo-controlled Trial**
R. Goldman (*USA*)
- 10:50 **Predominant Polarity in Bipolar I and II Disorders: A Five-year Follow-up Study**
S. Pallaskorpi (*Finland*)
- 10:55 **How to Distinct Between Unipolar and Bipolar Depression: The Role of Adhesion Molecules**
M. Pantovic (*Serbia*)
- 11:00 **Hippocampal Subfields in Suicidal Attempters with Bipolar Disorder**
G. Sani (*Italy*)
- 11:05 **Duration of Lithium Exposure and Hippocampus/amygdala Volumes in Bipolar Disorder**
A. Simonetti (*Italy*)
- 11:10 **Treatment Compliance in Patients with Bipolar I Disorder During Remission**
N. Tepe-Bal (*Turkey*)
- 11:15 **Safety and Effectiveness of Long-term Treatment with Lurasidone in Children and Adolescents with Bipolar Depression: A 6-month Interim Analysis of a 2-year Open-label Extension Study**
M. Tocco (*USA*)
- 11:20 **Influence of Family Group Psycho-education On Relapse Rate and Duration of Hospitalization in Patients with Bipolar Disorder Type I**
S.M. Zamir (*Iran*)



10:00 - 11:30

Euterpe

Workshop:

E-Mental Health: New Media and New Data to Prevent, Treat and Assess Efficacy

Chairs: A. Luquiens (*France*)
S. Berrouguet (*France*)

- 10:00 **Big Data to Track and Treat? Proposing Online Therapy to Problem Gamblers: A Randomised Clinical Trial**
A. Luquiens (*France*)
- 10:15 **Development of a Connected Health System for the Prevention of Suicidal Recidivism**
E. Guillodo (*France*)
- 10:30 **Development of a Text-Message Brief Contact Intervention Following a Suicide Attempt**
R. Billot (*France*)
- 10:45 **A Mobile Application for the Management of Addictions: Example of the Application Stop-Cannabis**
Y. Khazaal (*Switzerland*)
- 11:00 **Ecological Momentary Assessment and Suicide Prevention: The MEmind Ecosystem**
E. Guillodo (*France*)
- 11:15 **Discussion**

Scientific Programme
Sunday, 4 March 2018

10:00 - 11:30

Hermès

Symposium:

Setting Priorities for Mental Health Research in Europe

Chairs: M. Maj (*Italy*)
T. Wykes (*United Kingdom*)

- 10:00 **The ROAMER Project: A Roadmap for Mental Health Research in Europe**
J.M. Haro (*Spain*)
- 10:20 **Priorities For Mental Health Research in Europe: A Survey Among National Stakeholders' Associations within the ROAMER Project**
A. Fiorillo (*Italy*)
- 10:40 **Defining Research Priorities for Mental Health: An Integrated and Comprehensive ROADMAP**
T. Wykes (*United Kingdom*)
- 11:00 **The Psychological Perspective on Mental Health and Mental Disorder Research in Europe**
U. Wittchen (*Germany*)
- 11:20 **Discussion**



10:00 - 11:30

Calliope

Symposium:

Closing the Mortality Gap in Schizophrenia

Chairs: T. Kurimay (*Hungary*)

C. Hanon (*France*)

- 10:00 **Mortality Gap in Schizophrenia: What the Data Tell Us**
E. Mittendorfer-Rutz (*Sweden*)
- 10:20 **Should Psychiatrists Be More Cautious About the Long-Term Prophylactic Use of Antipsychotics**
R. Murray (*United Kingdom*)
- 10:40 **Securing the Right to Health for Persons with Mental Health Problems and Disabilities**
A. Deister (*Germany*)
- 11:00 **Reduced Life Expectancy in People with Schizophrenia**
J. Westman (*Sweden*)
- 11:20 **Discussion**

Scientific Programme
Sunday, 4 March 2018

10:00 - 11:30

Rhodes Exhibition area

Ask the Experts I

- 10:00 **Person-centred Psychiatry**
G. Stanghellini (*Italy*)
- 10:00 **Why Eating Disorders Begin in Adolescence**
J. Treasure (*United Kingdom*)
- 10:00 **Precision Medicine in Addiction**
W. van den Brink (*The Netherlands*)
- 10:00 **Assisted Suicide in Psychiatric Patients**
J. Vandenberghe (*Belgium*)
- 10:00 **Do Bipolar Disorders Benefit from Apps and eMental Health Programmes**
E. Vieta (*Spain*)
- 10:00 **How to Address Domestic and Sexual Violence in Clinical Work**
L. Howard (*United Kingdom*)
- 10:00 **Launch of the first EPA MOOC (on the topic of Psychotherapy)**
S. Moorey (*United Kingdom*)

11:30 - 11:45

Exhibition

Short Break to Change Halls

11:45 - 12:30

Apollon

Plenary Lecture:

An Innovative Conceptualisation of Mental Disorders: The Network Approach

Chair: P. Gorwood (*France*)

Speaker: D. Borsboom (*The Netherlands*)

12:30 - 13:15

Exhibition

Lunch Break, Exhibition, e-Poster Viewing and e-Poster Walks



15:00 - 16:30



Apollon

Symposium:

Recent Developments in Perinatal Mood Disorders

Chairs: A. Wieck (*United Kingdom*)
M. Eberhard-Gran (*Norway*)

- 15:00 **New Findings in Perinatal Bipolar Disorder**
A. Wieck (*United Kingdom*)
- 15:20 **The Impact of Postpartum PTSD on Child Development**
M. Eberhard-Gran (*Norway*)
- 15:40 **Preconception Consultation - Challenges of Translating Evidence into Clinical Practice**
E. McDonald (*United Kingdom*)
- 16:00 **The Neural Correlates of Perinatal Anxiety and Depression**
J. Pawluski (*France*)
- 16:20 **Discussion**

15:00 - 16:30

Athena

Debate:

Antipsychotic Treatment: Polypharmacy Is Better than Monotherapy

Chair: I. Bitter (*Hungary*)

- 15:00 **Pro**
C. Correll (*USA*)
- 15:45 **Con**
S. Leucht (*Germany*)

Scientific Programme
Sunday, 4 March 2018

15:00 - 16:30

EECP

Clio

EECP Symposium:

Internet, Smartphones and Mental Health Apps - What Is Their Role in Psychiatry?

Chairs: M. Pinto da Costa (*Portugal*)

D. Mucic (*Denmark*)

- 15:00 **Patient Interest, Engagement, and Innovation in Smartphones for Psychiatry**
Davor Mucic (*Denmark*)
- 15:20 **Using Video-calls to Combat Loneliness in Old Age**
S. Zamir (*United Kingdom*)
- 15:40 **Face-to-face or Digitally? Patients' Preferences of Being in Contact with a Volunteer**
M. Pinto da Costa (*Portugal*)
- 16:00 **The Role of Social Media in Building Resilience Among Psychiatrists**
G. Lydall (*United Kingdom*)
- 16:20 **Discussion**

15:00 - 16:30

Thalie

Oral Communications 3:

Child and Adolescent Psychiatry / Comorbidity / Dual Pathologies / Consultation Liaison Psychiatry and Psychosomatics

- 15:00 **Serum Levels of IGF-I in Delirious and Non-delirious Acutely Ill Older Medical Inpatients**
D. Adamis (*Ireland*)
- 15:05 **Prevalence of Depressive Symptoms Among Victims of Sexual Abuse: Cross Sectional Study From Oman**
M. Al Shekaili (*Oman*)
- 15:10 **Risk and Type of New Onset Seizures in Patient with and without Dementia**
R. Castilla-Puentes (*USA*)



- 15:15 **Opioid Maintenance Therapy in Subjects Receiving Antipsychotic for Schizophrenia**
A. Dervaux (*France*)
- 15:20 **Adolescent Early Birds VS Night Owls: Chronotype and the Psychological Health of Youth**
G. Gariepy (*Canada*)
- 15:25 **Changes in Hormones, Melatonin and Cortisol, Related to the Psychological and Sleep States of High School Students**
H. Kim (*South Korea*)
- 15:30 **Cognitive Function and Home-Environmental Outcomes in Perinatally Acquired HIV-Positive Pre-and-School Age Children on cART in South Africa**
A. Lentoor (*South Africa*)
- 15:35 **Suicide Attempts in Bipolar Disorder: Risk Factors in a Cohort of 220 Patients**
H. Maatallah (*Tunisia*)
- 15:40 **Guanfacine for Autism Spectrum Disorder: Use in an Outpatient Unit**
V. Muñoz Martínez (*Spain*)
- 15:45 **Life Trajectories of Adverse Experience: Tracing the Paths to Suicide**
C. Notredame (*France*)
- 15:50 **A Prospective Longitudinal Investigation of the (Dis)continuity of Mental Health Difficulties between Mid- To Late- childhood and the Predictive Role of Familial Factors**
C. O'Connor (*Ireland*)
- 15:55 **Depression and Anxiety as Factors of Cognitive Disorders in Patients with Essential Hypertension**
E. Pervichko (*Russia*)
- 16:00 **Outcome Measures for Autism Spectrum Disorders: A Systematic Review**
U. Provenzani (*Italy*)
- 16:05 **Psychiatric Comorbidity and Medication Usage in Adult Autism Spectrum Disorder (ASD): Results From the Ncmh Adult Asd Cohort**
J. Underwood (*United Kingdom*)
- 16:10 **The Effects of Adverse Childhood Experience and Social Support On Self-injury Behaviours in Adolescents: Is There Any Gender Difference?**
Y. Wan (*United Kingdom*)

15:00 - 16:30



Erato

Workshop:

Psychopharmacological Treatment in Elderly Patients: Chances and Gaps in Psychopharmacological Treatment

Chairs: R. Heun (*United Kingdom*)
J. Bobes (*Spain*)

- 15:00 **Sleep Inducers in Elderly Patients: What to Prescribe?**
 J. Bobes (*Spain*)
- 15:15 **How to Avoid Irrational Polypharmacy in Elderly Patients? Psychopharmacologist's View**
 M. Stuhec (*Slovenia*)
- 15:30 **Drug Discontinuation in Elderly Patients. When It is Possible and Rational in Patients with Mood Disorders?**
 R. Heun (*United Kingdom*)
- 15:45 **Psychopharmacological Approach to Mood Disorders in the Elderly: Realities and Perspectives**
 M. Martin Carrasco (*Spain*)
- 16:00 **Clinical Aspects of Polypharmacy in Geriatric Medicine – the Role of Psychotropics**
 G. Laux (*Germany*)
- 16:15 **Discussion**



15:00 - 16:30

Uranie

Workshop:

Improving Psychiatric Training: In Home Countries and in Europe

Chairs: V. Pereira Sánchez (*Spain*)
C. Matei (*Germany*)

- 15:00 **Building National Collaborations With Senior Psychiatrists: The Spanish Experience**
N. Gomez-Coronado (*Spain*)
- 15:10 **Challenges of Psychiatric Trainees in Eastern Europe**
T. Gondek (*Poland*)
- 15:20 **Coordinating the Efforts From Trainees Around Europe**
C. Matei (*Germany*)
- 15:30 **Crossing the Bridge: Achievements of Psychiatric Trainees in Turkey**
E. Sönmez (*Turkey*)
- 15:40 **Exploring Training and Working Opportunities of Substance Abuse and Dual Disorders for Early-Career Psychiatrists**
C. Gomez (*Spain*)
- 15:50 **Developing and Improving Training in Child and Adolescent Psychiatry in Europe**
T. Gómez Alemany (*Spain*)
- 16:00 **Discussion**

15:00 - 16:30

Euterpe

Joint Symposium with the ECNP:

Advancing Psychiatric Drug Development Through New Approaches

Chairs: S. Galderisi (*Italy*)
C. Arango (*Spain*)

- 15:00 **Using Neuroimaging to Guide Development for Psychiatric Treatment**
Oliver Gruber (*Germany*)
- 15:30 **Exploring Drug Effects on Human Models of Emotional Processing**
S. Murphy (*United Kingdom*)
- 16:00 **Moving Towards Integrated Translational Approaches in Psychiatric Research**
M. Kas (*The Netherlands*)

WWW.EPA-CONGRESS.ORG

49

Scientific Programme
Sunday, 4 March 2018

15:00 - 15:45

Hermès

State of the Art Lecture:

Developments in Diagnosis and Treatment of Bipolar Disorders: New Technologies and Approaches

Chair: P. Courtet (*France*)

Speaker: E. Vieta (*Spain*)

15:00 - 16:30

Calliope

Symposium:

Childhood Trauma and Eating Disorders: Neurobiological and Clinical Aspects

Chairs: P. Monteleone (*Italy*)

S. Guillaume (*France*)

15:00

Childhood Trauma and Hypothalamus-Pituitary-Adrenal Axis

V. Mondelli (*United Kingdom*)

15:25

Neurobiological Effect of Childhood Trauma Exposure in Adults with Eating Disorders

A.M. Monteleone (*Italy*)

15:50

Childhood Traumatic Experiences and Clinical Characteristics of Patients With Eating Disorders

S. Guillaume (*France*)

16:15

Discussion

15:45 - 16:30

Hermès

State of the Art Lecture:

How to Address Domestic and Sexual Violence in Clinical Work?

Chair: M. Schouler-Oçak (*Germany*)

Speaker: L. Howard (*United Kingdom*)



16:30 - 17:00

Exhibition

Coffee Break, Exhibition, e-Poster Viewing and e-Poster Walks

17:00 - 18:30

Apollon

Symposium:

Circadian Rhythms, Sleep and Activity in the Course, Early Detection and Treatment of Mood Disorders

Chairs: F. Bellivier (*France*)
G. Morken (*Norway*)

17:00 **Impact of Circadian Phenotypes and Genes On the Clinical Expression of Bipolar Disorders**

B. Etain (*France*)

17:20 **When Variability Counts: Modeling the Actigraphy Signal for More Comprehension of Various Mood States**

K. Krane-Gartiser (*Norway*)

17:40 **Do 'Omics' Approaches Identify a Circadian Signature Associated to Lithium Response in Bipolar Disorders?**

F. Bellivier (*France*)

18:00 **Sleep Disturbances as Predictors of Transition to Mood Disorders and as a Target for Early Interventions in At-risk Subject**

J. Scott (*United Kingdom*)

18:20 **Discussion**

Scientific Programme
Sunday, 4 March 2018

17:00 - 18:30

Athena

Symposium:

E-Mental Health: New Opportunities to Innovate in Affective Disorders

Chairs: D.J. Palao Vidal (*Spain*)

U. Hegerl (*Germany*)

17:00 **Depression Case Management Innovation at Primary Care
by Using a Computerized Clinical Practice Guideline**

D.J. Palao Vidal (*Spain*)

17:20 **Self-management in Affective Disorders: How to Use
Both Patient Generated Data and Internet and CBT-based
Programmes in Routine Care**

U. Hegerl (*Germany*)

17:40 **The Effect of Smartphone-based Treatment Interventions
in Bipolar Disorder**

M. Faurholt-Jepsen (*Denmark*)

18:00 **Developing a mHealth Framework to Improve Bipolar
Disorder Self-management: Lithium Home Monitoring**

N. Cardoner (*Spain*)

18:20 **Discussion**

17:00 - 18:30

EECP

Clio

EECP Training Workshop:

Psychotherapy for Patients with Eating Disorders: What Works?

Chairs: K. Koelkebeck (*Germany*)

M. Hermans (*Belgium*)

17:00 **Psychotherapy for Patients with Eating Disorders: What Works?**

J. Treasure (*United Kingdom*)



17:00 - 18:30

Thalie

Symposium:

Is It Still Time to Challenge Stigma Attached to Mental Disorders?

Chairs: A. Fiorillo (*Italy*)
J. Beezhold (*United Kingdom*)

- 17:00 **Proud to Be Psychiatrists: Making the Most of Our Specialty**
J. Beezhold (*United Kingdom*)
- 17:20 **Reducing Stigma Among Young People With Mental Health Problems and Implications for Help-Seeking**
S. Evans-Lacko (*United Kingdom*)
- 17:40 **Implementing Anti-Stigma Actions in Community Care. What Really Works**
A. Lasalvia (*Italy*)
- 18:00 **The Role of Mass Media and Social Media for Challenging Stigma**
G. Sampogna (*Italy*)
- 18:20 **Discussion**

17:00 - 18:30



Erato

Workshop:

Implementing Early Detection and Intervention Services for Psychosis in Europe: Obstacles and How to Overcome Them

Chairs: A. Riecher-Rössler (*Switzerland*)
N. Maric Bojovic (*Serbia*)

- 17:00 **Implementing Early Detection and Intervention Services for Psychosis in Europe: Obstacles and How to Overcome Them**
A. Riecher-Rössler (*Switzerland*)
- 17:20 **Implementation of Early Detection Services: Current Status and Perspectives in Southeastern Europe**
N. Maric Bojovic (*Serbia*)
- 17:40 **Implementation of Early Detection Services in France: Current Status and Further Perspectives**
M. Krebs (*France*)
- 18:00 **Implementation of Early Detection Services: Economic Perspectives**
D. McDaid (*United Kingdom*)
- 18:20 **Discussion**

Scientific Programme
Sunday, 4 March 2018

17:00 - 18:30

Uranie

Workshop:

Ethical Challenges in the Practice of Psychiatry – How Do We Improve the Quality of the Decision-Making Process?

Chairs: D. Wasserman (*Sweden*)
L. Vavrusova (*Slovakia*)

17:00 **Declaration of Geneva: Medical Oath as an Ethical Guideline**
R.J. van der Gaag (*The Netherlands*)

17:20 **Ethical Dilemmas in the Provision of Mental Health Care**
N. Sartorius (*Switzerland*)

17:40 **Values-based Practice, Ethics in Action**
S. Bailey (*United Kingdom*)

18:00 **Ethical Challenges Assessed in the Clinical Ethic Committee of Psychiatry in the Region of Southern Denmark in the Period 2010-2015: A Qualitative Content Analysis**
H. Bruun (*Denmark*)

18:20 **Discussion**

17:00 - 18:30

Euterpe

Joint Symposium with the EBC:

The Value of Effective Transition of Care

Chairs: Silvana Galderisi (*Italy*)
Monica di Luca (*Italy*)

17:00 **Introduction – Primary and Secondary prevention in Child & Adolescent Psychiatry**
N. Specchio (*Italy*)

17:20 **Primary & Secondary prevention in Psychiatry - A focus on children and adolescents**
C. Arango (*Spain*)

17:40 **Optimising Transition from Child to Adult Mental Health Care for Eating Disorders**
U. Schmidt (*United Kingdom*)

18:00 **Transition of Care in ADHD**
P. Asherson (*United Kingdom*)

18:20 **Discussion**



17:00 - 18:30



Hermès

Symposium:

Resource-Oriented Approaches in the Treatment of Refugees

Chairs: I.T. Graef-Calliess (*Germany*)

M. Schouler-Oçak (*Germany*)

17:00 Cultural Adaptation of Minimally Guided Interventions for Refugees: Chances and Challenges

E. Heim (*Switzerland*)

17:20 Implementing Scalable Interventions for Common Mental Disorders in Response to the Syrian Refugee Crisis: First Results Regarding Problem Management Plus (PM+ Programmes)

M. Sijbrandij (*The Netherlands*)

17:40 Peer Support: The Potential of Ethnically Diverse Peer Navigators to Address Ethnic Health Disparities in Refugees

I. Missmahl (*Germany*)

18:00 Resilience Oriented Treatment and Strategies (ROTS) in Refugees and Asylum Seekers in Psychiatric Settings

K. Laban (*The Netherlands*)

18:20 Discussion

Scientific Programme
Sunday, 4 March 2018

17:00 - 18:30



Calliope

Symposium:

Treating Beyond Symptoms to Improve Outcome: Cognitive Remediation in Psychiatry

Chairs: A. Mucci (*Italy*)
W. Gaebel (*Germany*)

- 17:00 **Using Metacognition in Cognitive Remediation: Implications for Therapy Delivery and Functional Outcome**
M. Cella (*United Kingdom*)
- 17:20 **Cognitive Remediation in Subjects with Schizophrenia: Effectiveness and Impact On Use of Psychiatric Services**
A. Vita (*Italy*)
- 17:40 **Cognitive Training in Subjects at Ultra-high Risk for Psychosis**
M. Nordentoft (*Denmark*)
- 18:00 **Cognitive Dysfunction and Remediation in Affective Disorders**
G. Sachs (*Austria*)
- 18:20 **Discussion**



EUROPEAN
PSYCHIATRIC
ASSOCIATION



EPA 2018
26th
EUROPEAN
CONGRESS
OF PSYCHIATRY

Scientific Programme
Monday, 5 March 2018

SCIENTIFIC
PROGRAMME

MONDAY,
5 MARCH 2018



International Neuropsychological Society 2018 Mid-Year Meeting

Bridging Science and Humanity

July 18–20, 2018, Prague, Czech Republic



Dear colleagues, dear friends,

We are pleased and honored to announce that the INS mid-year meeting, in association with the Czech Neuropsychological Society, will be held in Prague, the beautiful capital of the Czech Republic and the reputed „Heart of Europe“.

The conference theme, „Bridging Science and Humanity,“ was inspired by Prague's location at a crossroads of diverse cultures, languages, and political and economic systems.

In line with the conference theme, the 2018 INS mid-year meeting in Prague will focus on the following topics:

- The practice of neuropsychology in an increasingly globalized and diverse world
- The neuroscience of key human processes, such as morality, ethics, or political and economic decision making
- The application of science to humane and holistic patient care

We look forward to seeing you at INS-CENES Prague 2018!



Lenka Kramska

President

Czech Neuropsychological Society

www.cenes.cz



Keith Yeates

President

The International Neuropsychological Society

www.the-ins.org



Meeting Venue

Prague Congress Centre

5.května 65, 140 21 Prague 4, Czech Republic

www.kcp.cz

Call for abstracts:

ins2018.guarant.eu/abstracts

The abstract submission deadline is February 28, 2018.

Registration is open:

www.ins2018.org/registration

Deadline for early registration is May 14, 2018.



www.ins2018.org



SCIENTIFIC PROGRAMME MONDAY, 5 MARCH 2018

8:00 - 9:30



Athena

Symposium:

Mapping Symptoms and Syndromes for Psychosis: Is Neuroimaging Useful for Psychopathology Stratification?

Chairs: P. Brambilla (*Italy*)

S. Frangou (*USA*)

- 8:00 **Neuroimaging Phenotypes of Symptomatic Improvement**
S. Frangou (*USA*)
- 8:20 **Imaging Psychosis: Similarities and Differences Between Schizophrenia and Bipolar Disorder**
P. Brambilla (*Italy*)
- 8:40 **The Impact of Early Environmental Stress On the Brain of Affected and Non-affected Twins and Epigenetic Related Signatures**
L. Fañanás (*Spain*)
- 9:00 **Gyrification, Cortical Thickness and Volume Across the Psychosis Spectrum: From Sub-clinical Psychotic Features to High-risk Populations and the Heterogeneity Within Schizophrenia**
I. Nenadic (*Germany*)
- 9:20 **Discussion**

Scientific Programme
Monday, 5 March 2018

8:00 - 9:30

EECP

Clio

EECP Panel:

How Can Psychiatry Contribute to the Promotion of Human Rights of People with Mental Health Problems?

Chairs: D. Krupchanka (*Czech Republic*)
N. Sartorius (*Switzerland*)

8:00 **How to Fight Human Rights Violations, Discrimination and Stigma Attached to Mental Health Conditions?**

P. McGovern (*Switzerland*)

8:20 **Human Rights Promotion in Psychiatry**

A. Heinz (*Germany*)

8:40 **Perspectives from the European Federation of Associations of Families of People with Mental Illness (EUFAMI)**

M. Männikkö (*Finland*)

9:00 **Mental Health Patients' expectations towards Psychiatrists in promoting Human Rights**

H. Kärkkäinen (*Finland*)

9:20 **Discussion**

8:00 - 9:30

Thalie

Oral Communications 4:

Cultural Psychiatry / Posttraumatic Stress Disorder / Epidemiology and Social Psychiatry / Intellectual Disability / Oncology and Psychiatry

8:00 **Importance of an Early EMDR Intervention in Emergency Room to Prevent Posttraumatic Stress Disorder and Concussion-like Persistent Symptoms: A Pilot Randomised Controlled Study**

S. Al Joboory (*France*)

8:05 **Effects of Bilateral Alternated Stimulation on Memory of Emotional and Neutral Content**

S. Baier (*France*)

8:10 **Empathy in Bosnian War Veterans with and Without Posttraumatic Stress Disorder**

E. Becirovic (*Bosnia - Herzegovina*)

8:15 **Suicidality Factors in Alcoholics Among Indigenous Population of Far North**

N. Bokhan (*Russia*)



- 8:20 **Genetic Epidemiolgy of Chronic Psychiatric Disorder in Caribbean Island: A Pilot Study**
S. Florence (*France*)
- 8:25 **Burnout in Medical Students Before Residency: Systematic Review and Meta-analysis**
A. Frajerman (*France*)
- 8:30 **Adults With Intellectual Disabilities In China: Co-Morbid Psychiatric Disorder and its Association With Health Service Utilisation**
P. He (*China*)
- 8:35 **Improving Child and Women's Mental Health among Ultra-Poor Families: Two-Year Results of a Cluster-Randomised Trial in West Africa**
L. Ismayilova (*USA*)
- 8:40 **Glutamate Anterior Cingulate Cortex Glutamate Activity in Autism Spectrum Disorder with and Without Emotional Dysregulation**
G. Joshi (*USA*)
- 8:45 **Mediating Effects of Depression on the Relationship Between Resilience and Posttraumatic Stress Symptoms and Dissociation in Firefighters**
T.H. Kwon (*South Korea*)
- 8:50 **Diagnostic Criteria of Posttraumatic Stress Disorder; Gender Differences**
E. Lassemo (*Norway*)
- 8:55 **The Perception of Mentally Ill and its Impact on Desire for Social Distance by the Public in Hanoi, Vietnam**
L.K. Martensen (*Germany*)
- 9:00 **A Cross-cultural Comparison of Self-reported Burdens Between Vietnamese and German Psychiatric Outpatients – Findings From an Interdisciplinary Mixed Method Study**
M.H. Nguyen (*Germany*)
- 9:05 **Audit on the Management of Depression and Anxiety in Oncology Patients undergoing Breast Surgery and Their Relative**
E. Saliba (*Malta*)
- 9:10 **Cholinesterase Inhibitors and Survival in Alzheimer's Disease in Down Syndrome**
A. Strydom (*United Kingdom*)

8:00 - 9:30



Erato

Symposium:

Chronic Pain and Risk of Addiction

Chairs: G. Dom (*Belgium*)
M. Wojnar (*Poland*)

- 8:00 **The "P" of Psychiatry in Pain Management: A Trial With Suboxone**
A. Schellekens (*The Netherlands*)
- 8:20 **Another Important Piece in a Complex Puzzle? Exploring Significance of Pain in Alcohol Dependence**
A. Jakubczyk (*Poland*)
- 8:40 **The Misuse of Prescription Opioids: A Threat For Europe?**
W. Van den Brink (*The Netherlands*)
- 9:00 **Assessing the Risk of Addiction in Chronic Pain Management**
G. Dom (*Belgium*)
- 9:20 **Discussion**



8:00 - 9:30

Uranie

Workshop:

Apathy and Disorders of Motivation: Assessment and Therapeutic Perspectives

Chairs: P. Robert (*France*)

B. Dubois (*France*)

- 8:00 **Apathy in Pre Dementia: Prevalence, Neurobiology and Treatment**
K. Lanctot (*Canada*)
- 8:10 **How Audio, Video and Actigraphic Sensors Can Be Used for the Apathy Assessment**
A. König (*France*)
- 8:20 **How Information and Communication Technologies Can Be Used As Therapeutic Options for Patients with Apathy**
V. Manera (*France*)
- 8:30 **Relationships Between Apathy and Motor Activity in Actigraphic Studies**
R. David (*France*)
- 8:40 **Apathy from a Neurological Perspective**
B. Dubois (*France*)
- 8:50 **Diagnostic Criteria for Apathy Revisited**
P. Robert (*France*)
- 9:00 **Discussion**

Scientific Programme
Monday, 5 March 2018

8:00 - 9:30

Euterpe

Joint Symposium with Hosting NPA:

Social Exclusion is Harmful for Mental Health

Chairs: S. Galderisi (*Italy*)
P. Courtet (*France*)

- 8:00 **How Is the Brain Sensitive to Social Exclusion?**
E. Olié (*France*)
- 8:20 **Perception and Reactions to Social Cues**
J. Grèzes (*France*)
- 8:40 **Loneliness in Young Adulthood: Findings From an
Epidemiological Cohort Study**
T. Matthews (*United Kingdom*)
- 9:00 **Biological Mechanisms Whereby Social Exclusion May
Contribute to the Etiology of Psychosis: A Narrative Review**
A. Meyer-Lindenberg (*Germany*)
- 9:20 **Discussion**

8:00 - 9:30

Hermès

Symposium:

Forcibly Displaced People and Mental Health in Europe: Challenges and Needs

Chairs: L. Küey (*Turkey*)
M. Carisius Kastrup (*Denmark*)

- 8:00 **Dimensions of the Problem and the Psychosocial Context**
L. Küey (*Turkey*)
- 8:20 **Traumas Faced on the Way**
I.T. Graef-Calliess (*Germany*)
- 8:40 **Mental Health Situation of Forcibly Displaced People**
M. Schouler-Oçak (*Germany*)
- 9:00 **Mental Health Services for Asylum Seekers and Refugees**
M. Carisius Kastrup (*Denmark*)
- 9:20 **Discussion**



8:00 - 9:30

Calliope

Symposium:

Exercise Interventions as a Tool for Promoting Recovery in Schizophrenia

Chairs: H. Hulshoff Pol (*The Netherlands*)
B. Malchow (*Germany*)

- 8:00 **Changes in Brain Connectivity After Endurance Training in Schizophrenia**
H. Hulshoff Pol (*The Netherlands*)
- 8:20 **Combining Endurance Training With Cognitive Remediation in Multi-episode Schizophrenia**
B. Malchow (*Germany*)
- 8:40 **Impaired Cardiac Response to Incremental Exercise in Patients With Schizophrenia**
K. Bar (*Germany*)
- 9:00 **Implications of Findings from Animal Models for the Effects of Exercise on Patients With Schizophrenia**
W.G. Honer (*Canada*)
- 9:20 **Discussion**

8:00 - 11:30



Risso 6A

EPA Course 12:

Patient-Centred Care: Shared Decision Making and Motivational Interviewing

E. Baron (*The Netherlands*)
L. De Backer (*Belgium*)

8:00 - 11:30



Risso 6C

EPA Course 13:

Resilience, Grit and Emotional Intelligence: Key Qualities for Effectively Managing Your Professional and Personal Development

G. Radu (*Canada*)
J. Mckimm (*United Kingdom*)

Scientific Programme
Monday, 5 March 2018

9:30 - 10:00

Exhibition

Coffee Break, e-Poster Viewing and Visit the Exhibition

10:00 - 11:30

Athena

Symposium:

Brain Mechanisms of Resilience to Mood and Psychotic Disorders

Chairs: S. Frangou (*USA*)

A. Fiorillo (*Italy*)

10:00

Identifying the Brain Mechanisms of Resilience to Stressful Life Events, Psychological Distress and Depression

A. McIntosh (*United Kingdom*)

10:20

Identifying the Brain Mechanisms of Resilience to Familial Risk for Bipolar Disorder

S. Frangou (*USA*)

10:40

Brain Volume Abnormalities in Different Types of First Degree Relatives of Schizophrenia and Bipolar Disorder: An ENIGMA Study

N. van Haren (*The Netherlands*)

11:00

Polygenic Risk Profile Score Increases Schizophrenia Liability Mostly Through Cognition Pathways: Mathematical Causation Models with Latent Cognition and Polygenic Risk

T. Touloupoulou (*Turkey*)

11:20

Discussion



10:00 - 11:30

EECP

Clio

EECP Training Workshop:

Perinatal Psychiatry for Beginners

Chairs: N. Jovanovic (*United Kingdom*)
H. Herrman (*Australia*)

10:00 **Key Clinical Challenges in Perinatal Psychiatry**
L. Howard (*United Kingdom*)

10:45 **Pharmacotherapy in Pregnancy and Postnatal Period**
T. Kurimay (*Hungary*)

10:00 - 11:30

S

Thalie

Symposium:

Attention-Deficit Hyperactivity Disorder and Suicide

Chairs: J. Balazs (*Hungary*)
P. Asherson (*United Kingdom*)

10:00 **Aetiological Links Between ADHD and the Development of Depression**
P. Asherson (*United Kingdom*)

10:20 **Prevalence and Treatment of ADHD and Mood Disorders**
S. Kooij (*The Netherlands*)

10:40 **Possible Association Between Attention Deficit Hyperactivity Disorder and Attempted Suicide in Adolescents**
G. Zalsman (*Israel*)

11:00 **ADHD and Suicide and Non-Suicidal Self Injury: The Role of Comorbidity**
J. Balazs (*Hungary*)

11:20 **Discussion**

Scientific Programme
Monday, 5 March 2018

10:00 - 11:30



Erato

Workshop:

Mental Health in Adults with Autism

Chairs: B. Perera (*United Kingdom*)
S. Elstner (*Germany*)

- 10:00 **Diagnosing Autism in Adults**
B. Perera (*United Kingdom*)
- 10:10 **Comorbid Mental Disorders in Autism**
H. Ramsay (*Ireland*)
- 10:20 **Behavioural Problems in People with Intellectual Disability and Autism**
S. Elstner (*Germany*)
- 10:30 **Autism in Adulthood**
K. Krysta (*Poland*)
- 10:40 **Sensory Sensitivities in People with Autism**
K. Courtenay (*United Kingdom*)
- 10:50 **Autism and Intellectual Disabilities**
M. Rossi (*Italy*)
- 11:00 **Discussion**



10:00 - 11:30



Uranie

Workshop:

Person-Centred Psychiatry: Practical Guidelines to Explore What It Is Like to Suffer from Mental Disorders

Chairs: G. Stanghellini (*Italy*)
M. Aragona (*Italy*)

- 10:00 **Person-centred Dialectical Models of Mental Disorders:
The Case of Schizophrenia**
G. Stanghellini (*Italy*)
- 10:20 **Philosophy of Illness**
D. Bhugra (*United Kingdom*)
- 10:40 **What Is Like to Be in an At-Risk Mental State for Psychosis**
A. Raballo (*Italy*)
- 11:00 **Personal Experiences in Phenomenological Psychopathology**
O. Doerr-Zegers (*Chile*)
- 11:20 **Discussion**

Scientific Programme
Monday, 5 March 2018

10:00 - 11:30



Euterpe

Symposium:

Battling Suicidal Behaviour in Europe: Successful Initiatives for Prevention

Chairs: J.P. Soubrier (*France*)
V. Carli (*Sweden*)

- 10:00 **Suicide Prevention in an Adolescent Population in Kazakhstan**
M. Sarchiapone (*Italy*)
- 10:20 **Supremocol: Suicide Prevention by Monitoring and Collaborative Care. A Regional Systems Approach in Noord Brabant, the Netherlands**
C. van der Feltz Cornelis (*The Netherlands*)
- 10:40 **Effects of the National Suicide Prevention Project in Finland: "Suicide Can Be Prevented"**
J. Lönnqvist (*Finland*)
- 11:00 **From Recontact Strategies Around the World to the French VigilantS Programme**
G. Vaiva (*France*)
- 11:20 **Discussion**



10:00 - 11:30

Hermès

Symposium:

From Analog to Digital: Using Computer-Science to Advance Mental Health Promotion

Chairs: S.J. Schmidt (*Switzerland*)
F. Schultze-Lutter (*Germany*)

- 10:00 **Overcoming the Implementation Gap in Psychotherapy Research by Means of Virtual-reality Therapy**
L. Valmaggia (*United Kingdom*)
- 10:20 **Serious Computer Games - Are They Really an Alternative to Face-to-face Psychotherapy?**
D. Zullino (*Switzerland*)
- 10:40 **Detecting Profiles of Distress Using Machine Learning in Social Media**
R. Basili (*Italy*)
- 11:00 **Enhancing Resilience in Teenagers by an Online-prevention Programme**
S.J. Schmidt (*Switzerland*)
- 11:20 **Discussion**

Scientific Programme
Monday, 5 March 2018

10:00 - 11:30

Calliope

Symposium:

Recovery-Oriented Approach to Severe Mental Disorders: Focusing on Key Variables to Improve Outcome

Chairs: S. Galderisi (*Italy*)
P. Gorwood (*France*)

- 10:00 **Developing a Focus on Recovery in Mental Health Systems**
M. Amering (*Austria*)
- 10:20 **Centrality of Community Activities in a Network Analysis of Outcome-limiting Factors: Implications for Recovery-oriented Strategies**
A. Mucci (*Italy*)
- 10:40 **Treatment Effectiveness in the Real-World: Addressing Adherence, Burden and Subjective Well-Being**
P. Gorwood (*France*)
- 11:00 **Relationships Between Personal and Clinical Recovery: Implications for Individualisation and Integration of Treatment Programmes**
A. Rossi (*Italy*)
- 11:20 **Discussion**

10:00 - 11:30

Galliéni

Oral Communications 5:

Depression Part II / Psychopharmacology and Pharmacoeconomics

- 10:00 **Major Depressive Disorder in Residents of Fort Mc Murray Six Months after a Wildfire: Prevalence Rates and Probable Correlates**
V. Agyapong (*Canada*)
- 10:05 **The Effectiveness of Various QEEG Parameters in Theta Frequency Band in Prediction of Response to Antidepressants in Patients with Depressive Disorder**
M. Bares (*Czech Republic*)



- 10:11 **A Meta-analysis of Dose Escalation of Antidepressants in Unipolar Depression Concerning Double-blind Randomised Controlled Trials**
L. Bartova (*Austria*)
- 10:16 **Predictors of Poor 6-week Outcome in a Cohort of Major Depressive Disorder Patients Treated With Antidepressant Medication: The Role of Entrapment**
F. Caetano (*Portugal*)
- 10:22 **Long-term Risk of Developing Dementia After Electroconvulsive Therapy for Depression**
S. Hjerrild (*Denmark*)
- 10:28 **Depression is Associated with Increased Risk of Cardiovascular Diseases in Primary Care Population in Latvia**
R. Ivanovs (*Latvia*)
- 10:33 **Comparison of the Effectiveness of Allopurinol and Placebo in Reducing Depressive Symptoms in Patients With Major Depressive Disorder**
H. Jamilian (*Iran*)
- 10:39 **Intervention for Maternal Depression and Early Child Development: An RCT From Urban Slums of Pakistan**
T. Kiran (*Pakistan*)
- 10:45 **Risk Factors Analysis for Late-onset Depression and the Relationship with Cognition Based on the Default Mode Sub-network**
R. Liu (*China*)
- 10:50 **The Link Between Lipid Profile and Mood Disorders Development at Elderly Patients**
S. Opris (*Romania*)
- 10:56 **Association between Cannabis Use and Prevalence of Major Depression in a Community-based Sample from Southern Spain**
A. Porras Segovia (*Spain*)
- 11:01 **Childhood Maltreatment and Major Depression: Results From the Granad-ep Study**
A. Porras Segovia (*Spain*)
- 11:07 **Factor Structure of the EURO-D Depression Scale in People over 50 in Europe with SHARE**
C. Portellano Ortiz (*Spain*)

- 11:13 **Sensory Profiles as Possible Predictors of Response to Psychoactive Medications in Major Affective Disorders**
G. Serafini (*Italy*)
- 11:18 **Severity, Course-trajectory and Within-person Variability of Individual Symptoms during 9 years in Outpatients with Major Depression**
W. van Eeden (*The Netherlands*)
- 11:24 **Angiotensin-converting-enzyme Inhibitors (ACEI) as a Repurposed Treatment for a Unipolar Depression: Results of a 20-year Follow-up Study**
D. Wincewicz (*Poland*)

10:00 - 11:30

Rhodes Exhibition area

Ask the Experts II

- 10:00 **Should Psychiatrists Be More Cautious About the Longterm Prophylactic Use of Antipsychotics?**
R. Murray (*United Kingdom*)
- 10:00 **Recognising and Treating Suicidal Patients**
D. Wasserman (*Sweden*)
- 10:00 **Dealing With Migrants' Mental Health Needs**
L. Küey (*Turkey*)
- 10:00 **Reconceptualising Psychiatry: The Network Approach**
D. Borsboom (*The Netherlands*)
- 10:00 **Should We Really Promote Exercise for Our Depressed Patients?**
M. Nordentoft (*Denmark*)
- 10:00 **Disclosing Mental Disorders: Advantages and Consequences**
S. Evans-Lacko (*United Kingdom*)
- 10:00 **Dealing With Stigma of Mental Disorders**
N. Sartorius (*Switzerland*)

11:30 - 11:45

Exhibition

Short Break to Change Halls



11:45 - 12:30

Apollon

Plenary Lecture:

High Risk and Resilience Studies: Lessons for Prevention, Care and Research

Chair: W. Gaebel (*Germany*)

Speaker: M. Nordentoft (*Denmark*)

12:30 - 13:15

Exhibition

Lunch Break, Exhibition, e-Poster Viewing and e-Poster Walks

15:00 - 16:30



Athena

Symposium:

Progress and Challenges in the Antipsychotic Treatment of Schizophrenia

Chairs: I. Bitter (*Hungary*)

J. Bobes (*Spain*)

- 15:00 **The Dopamine D3 Receptor - Clinical Implications**
P. Sokoloff (*France*)
- 15:20 **Do Antipsychotics Shrink the Brain?**
R. Kahn (*The Netherlands*)
- 15:40 **Continuity of Antipsychotic Treatment in Schizophrenia**
S. Kasper (*Austria*)
- 16:00 **Have Too High Doses of Antipsychotics Been Used in Schizophrenia?**
I. Bitter (*Hungary*)
- 16:20 **Discussion**

Scientific Programme
Monday, 5 March 2018

15:00 - 16:30

EECP

Clio

EFPT/ ECPC Symposium:

European Psychiatric Trainees' Research Projects: Key Findings

Chairs: K. Koelkebeck (*Germany*)
H. Ryland (*United Kingdom*)

- 15:00 **Assessing Barriers and Facilitators for Research by Early Career Psychiatrists: What do They Need?**
K. Koelkebeck (*Germany*)
- 15:20 **How is EFPT Bridging the Gap Between Clinical Practice and Research Among Psychiatry Trainees**
I. Frankova (*Ukraine*)
- 15:40 **E-psychiatry in France**
A. Fontaine (*France*)
- 16:00 **How Can Young Psychiatrists Keep Pace with the New Psychoactive Substances - Findings from the EFPT Pan-European Survey**
D. Quattrone (*Italy*)
- 16:20 **Discussion**

15:00 - 16:30

Thalie

Oral Communications 7:

Schizophrenia and Other Psychotic Disorders - Part I / Forensic Psychiatry / Obsessive-Compulsive Disorder

- 15:00 **A Combination of Polymorphisms in Three Genes Contributes to Premorbid Personality Disorders in Male Patients with Schizophrenia**
M. Alfimova (*Russia*)
- 15:06 **The Association between the GWAS Risk Allele rs2514218 (C) and Schizophrenia is Confirmed in the Russian Population**
M. Alfimova (*Russia*)
- 15:12 **Efficacy of Cariprazine in Predominant Negative Symptoms of Schizophrenia – Post Hoc Analyses against Different Comparators**
A. Barabassy (*Hungary*)



- 15:19 **Functional Remission Frequency in a French Cohort of Schizophrenia Patients Initiating Treatment with Long-Acting Injectable Antipsychotic**
E. Bessieres (*France*)
- 15:25 **Transition to Psychosis and Its Association to EEG Resting-state Microstates in High-risk Individuals**
L. Golz (*Switzerland*)
- 15:32 **Measuring Effectiveness of Long Acting Antipsychotics: Are We Doing It Right? The Minimum Effective Dose Method**
C. Gómez Sánchez-Lafuente (*Spain*)
- 15:38 **Can Be IL-2 and IL-1beta Specific Biomarkers of Negative Dimension in Schizophrenia?**
L. Gonzalez-Blanco (*Spain*)
- 15:45 **Higher Baseline C-Reactive Protein Mark Poor Clinical Course in the First Ten Years of Schizophrenia: One-year Follow-up Study**
L. Gonzalez-Blanco (*Spain*)
- 15:51 **Alteration of Inflammatory Cytokines in Different Age-at-onset Schizophrenia With Neurodevelopmental Deficits**
C. Hanyu (*Taiwan*)
- 15:57 **Paliperidone Palmitate 3-Monthly Formulation in Schizophrenia - Baseline Interim Analysis of a Naturalistic, 52-Week, Prospective Study**
L. Hargarter (*Germany*)
- 16:04 **Increased Mortality Following Myocardial Infarction in Patients With Schizophrenia: A Nationwide Cohort Study**
P. Kugathasan (*Denmark*)
- 16:10 **Relationships between Dysglycaemia, Immune Activation and Psychotic Experiences: Findings from the ALSPAC Birth Cohort**
B. Perry (*United Kingdom*)
- 16:17 **First Criminal Behaviour among Adults with Serious Mental Illness: Further Evidence of the Role of Gender and Substance Use Disorders**
J. Moamai (*Canada*)
- 16:23 **Oxidative and Nitrosative Markers in Obsessive-compulsive Disorder: A Systematic Review and Meta-analysis**
A. Maia (*Portugal*)

15:00 - 16:30

Erato

Oral Communications 6:

Depression Part I / Personality and Personality Disorders / Promotion of Mental Health / Mental Health Care / Research Methodology / Anxiety Disorders and Somatoform Disorders Part II

- 15:00 **Personality and Psychological Distress in Portuguese International Students: The Role of Stress and Social Support**
A.P. Amaral (*Portugal*)
- 15:06 **The Role of Perfectionism and Paranoia on Depression: Preliminary Results**
A.I. Araújo (*Portugal*)
- 15:12 **Personality Traits and Burnout Among Trainee-teachers of the Regional Center for Educational and Training Professions of Casablanca (Morocco)**
F. Azzaoui (*Morocco*)
- 15:19 **Borderline Personality Disorder as a Mediator of the Relation Between Self-reported Childhood Traumatic Experiences and Psychotic-like Experiences Among Patients With Mood Disorder**
I. Baryshnikov (*Finland*)
- 15:25 **Perfectionistic Self-presentation as a Mediator Between Narcissism and Psychological Distress: Preliminary Results**
M. Coroa (*Portugal*)
- 15:32 **Episodic Memory in Autism Spectrum Disorder: A Meta-analysis**
P. Desaunay (*France*)
- 15:38 **Perceived Social Support and Medication Compliance Among Patients with Psychiatric Disorders**
S. Harfush (*Egypt*)
- 15:45 **Anxiety Increases the Risk of Cardiovascular Diseases in Men but not Women: A Cross-Sectional Study of Primary Care Population in Latvia**
R. Ivanovs (*Latvia*)
- 15:51 **Coping Style Among Doctors and its Correlation with Depression and Subsequent Burnout and Perceived Stress During the Residency Training**
P. Pariwatcharakul (*Thailand*)



- 15:57 **Is the Stereotype of the Mad Psychiatrist a Justified Prejudice? A Comparison of Personality Traits Between Psychiatrists and Other Specialists**
S. Taib (France)
- 16:04 **Predicting Optimal Acute and Long-term Outcomes in Cognitive Therapy or Interpersonal Psychotherapy for Depressed Individuals Using the Personalised Advantage Index Approach**
S. van Bronswijk (Netherlands Antilles)
- 16:10 **A Systematic Review of Subjective Side Effects Following ECT Treatment**
S. Vann Jones (United Kingdom)
- 16:17 **Early Improvement as a Resilience Signal Predicting Later Remission to Antidepressant Treatment in Patients With Major Depressive Disorder: Systematic Review and Meta-analysis**
S. Wagner (Germany)
- 16:23 **Depression in Lesbian, Gay and Bisexual French Adolescents**
X. Wang (France)

15:00 - 16:30

Uranie

Symposium:

RTMS for Depression in Europe - It's Time for Approval from Health Authorities

Chairs: B. Langguth (*Germany*)
F. Rachid (*Switzerland*)

- 15:00 **From Multicentric Studies to Clinical Guidelines - Two Solutions Between Low and High Frequency in the Treatment of Depression**
E. Poulet (France)
- 15:20 **Neurobiological and Ethical Questions on Accelerated rTMS Paradigms**
C. Baeken (Belgium)
- 15:40 **NIBS from Acute to Maintenance Treatment – What Are the Options?**
F. Padberg (Germany)
- 16:00 **Cost and Reimbursement of rTMS: A Challenge for the Clinicians**
A. Sauvaget (France)
- 16:20 **Discussion**

WWW.EPA-CONGRESS.ORG

79

Scientific Programme
Monday, 5 March 2018

15:00 - 16:30

Euterpe

Symposium:

The Use and Abuse of Neuroimaging in Forensic Psychiatry: What Can We Learn From Neuroimaging Colleagues?

Chairs: K. Goethals (*Belgium*)

P. Brambilla (*Italy*)

15:00 **The Role of Neuroimaging Studies in Our Understanding of Suicidal Behaviour**

G. Serafini (*Italy*)

15:20 **The Use of Neuroimaging in Forensic Psychiatry**

A. Meyer-Lindenberg (*Germany*)

15:40 **The Use of Neuroimaging in Court: Science, Ethics and Practice**

M. Kyriakopoulos (*United Kingdom*)

16:00 **Neurobiological Underpinnings of Delinquent Behaviour: Violence and Sex Offences**

K. Schiltz (*Germany*)

16:20 **Discussion**

15:00 - 15:45

Hermès

State of the Art Lecture:

Advances in (Adolescent) Eating Disorders Treatment

Chair: M.P. Garcia-Portilla (*Spain*)

Speaker: J. Treasure (*United Kingdom*)



15:00 - 16:30

Calliope

Symposium:

Women in Psychiatry - Differences in Career Paths Across Europe

Chairs: S. Galderisi (*Italy*)

A. Szulc (*Poland*)

15:00 **Women in Psychiatry - How to Break Through the Glass Ceiling**

A. Szulc (*Poland*)

15:20 **Mentoring for Women in Psychiatry**

A. Riecher-Rössler (*Switzerland*)

15:40 **Women in Academic Psychiatry**

M. Amering (*Austria*)

16:00 **Strategies for Success for Women in Psychiatry**

S. Frangou (*USA*)

16:20 **Discussion**

Scientific Programme
Monday, 5 March 2018

15:00 - 16:30

Rhodes Exhibition AREA

Ask the Experts III

- 15:00 **Promoting Mental Health in a Period of Terrorist Attacks**
D. Bhugra (*United Kingdom*)
- 15:00 **Polypharmacy in Antipsychotic Treatments**
C. Correll (*USA*)
- 15:00 **Caring for People with Intellectual Disabilities**
K. Courtenay (*United Kingdom*)
- 15:00 **Developments in Old Age Psychiatry**
C. Hanon (*France*)
- 15:00 **Planning Ahead for Acute Mental Health Crises: Methods and Outcomes**
C. Henderson (*United Kingdom*)
- 15:00 **The WPA Programme for Strengthening the Contribution of Psychiatrists in Situations of Conflict and Emergency**
H. Herrman (*Australia*)
- 15:00 **Transition From Child to Adult Mental Health Services: What Should Be Avoided, and What Should Be Done**
P. McGorry (*Australia*)
- 15:00 **Changes in the Classification of Sexuality, Sexual Health, and Gender Identity for ICD-11**
G. Reed (*Switzerland*)

15:45 - 16:30

Hermès

State of the Art Lecture:

Precision Medicine in Addiction: A Bright Future?

* Presentation EUFAS/EAR Award to Prof. Wim van den Brink

Chair: G. Dom (*Belgium*)

Speaker: W. van den Brink (*The Netherlands*)

16:30 - 17:00

Exhibition

Coffee Break, Exhibition, e-Poster Viewing and e-Poster Walks



17:00 - 18:30

Athena

Symposium:

Individualised Treatments for Obsessive-Compulsive Disorders: From Bench to Bedside

Chairs: B. Dell'Osso (*Italy*)
N. Fineberg (*United Kingdom*)

- 17:00 **Biological Models in Obsessive-Compulsive Disorder**
J. Menchon (*Spain*)
- 17:20 **The International College of Obsessive-Compulsive Spectrum Disorders (ICOCS) Snapshot Study: Results and Clinical Correlates**
B. Dell'Osso (*Italy*)
- 17:40 **Duration of Untreated Illness, Dynamic Adherence and Response to Treatment in OCD**
U. Albert (*Italy*)
- 18:00 **New Treatment Strategies for OCD**
N. Fineberg (*United Kingdom*)
- 18:20 **Discussion**

17:00 - 18:30

EECP

Clio

EECP Court Debate:

Choose Your Career Wisely: Academia and/or Clinical Practice?

Chairs: D. Krupchanka (*Czech Republic*)
E. Sönmez (*Turkey*)

- 17:00 **Discussion Moderator**
P. Gorwood (*France*)
- 17:00 **Pros and Cons of Clinical Practice**
led by S. Galderisi (*Italy*)
- 17:45 **Pros and Cons of Academia**
led by R. Murray (*United Kingdom*)

Scientific Programme
Monday, 5 March 2018

17:00 - 18:30

Thalie

Oral Communications 8:

Psychoneuroimmunology / Psychophysiology / Psychotherapy / Rehabilitation and Psychoeducation / Training in Psychiatry / Genetics and Molecular Neurobiology

- 17:00 **Effect of Schizophrenia Risk Variants on Age at Onset, Age at Anti-psychotic Treatment Initiation, and Age at First Hospitalisation in Schizophrenia Patients**
A. Bani-Fatemi (*Canada*)
- 17:05 **Refining Suicide Prevention: Advances in Psychotherapeutic Tools**
R. Calati (*France*)
- 17:10 **Altered Th17 Pathway in Schizophrenia: Evidences From Genetic, Gene Expression and Biochemical Studies**
M. Debnath (*India*)
- 17:15 **Alterations in Bioelectric Activity of the Brain and Therapeutic Effects of Neurofeedback in Stroke Patients With Depressive States**
O. Dobrushina (*Russia*)
- 17:20 **The Genetics of Cognitive Functions in Major Depressive Disorder: A Review**
E.K. Fischer (*Denmark*)
- 17:25 **New Ways to Learn Psychopharmacology: Receptor Polygomis**
C. Gómez Sánchez-Lafuente (*Spain*)
- 17:30 **Psychiatric Disorders in Systemic Lupus Erythematosus**
N. Hamza (*Tunisia*)
- 17:35 **Stigmatising Attitudes Towards Mental Illness Among Medical Students**
H. Hernández-Évole (*Spain*)
- 17:40 **Stress, Inflammation and Depression: Integrative Role of the Endocannabinoid Pathway**
J. Lazary (*Hungary*)
- 17:45 **Recovery Model Implementation in Psychiatric in-patient Settings: Pilot Study**
L. Lipskaya-Velikovsky (*Israel*)
- 17:50 **Effects of Immunomodulatory Drugs on the Development of Chronic Opiate Dependence in Experimental Animals**
E. Markova (*Russia*)



- 17:55 **Innate Immunity Alterations in Schizophrenia: A Computational Deconvolution Study of Leukocyte Counts**
B. Misiak (*Poland*)
- 18:00 **Histone Deacetylase Inhibition During CUMS Prevents Anhedonia in Male Rat**
A. Nahavandi (*Iran*)
- 18:05 **A Psychophysiological Study of Cognitive Disorders in Naive Middle-Age Patients with Uncomplicated Essential Hypertension and White Matter Lesions**
E. Pervichko (*Russia*)
- 18:10 **A Role of T Cell Subsets in the Immun Dysfunction of Schizophrenia**
C. Sahbaz (*Turkey*)
- 18:15 **β 2-microglobulin: A Potential Biomarker for Bipolar Disorder and Schizophrenia?**
R. Sayous (*France*)
- 18:20 **Psychological Interventions in Patients Undergoing Bariatric Surgery - Preliminary Results of a Systematic Review**
D. Storman (*Poland*)

17:00 - 18:30



Erato

Symposium:

Women Migrants and Refugees: A Case for Special Mental Health Needs?

Chairs: M. Casanova Dias (*United Kingdom*)
A. Sutter-Dallay (*France*)

- 17:00 **Problems Faced By Women Refugees: An Overview**
M. Carisius Kastrop (*Denmark*)
- 17:20 **How to Address the Perinatal Needs of Women Refugees: An Example From France**
A. Sutter-Dallay (*France*)
- 17:40 **Trauma and Migration**
M. Schouler-Oçak (*Germany*)
- 18:00 **Risk Factors For Depression and PTSD Amongst Homeless Refugees**
M. Melchior (*France*)
- 18:20 **Discussion**

WWW.EPA-CONGRESS.ORG

85

Scientific Programme
Monday, 5 March 2018

17:00 - 18:30

Uranie

Symposium:

International Trainee-Led Psychiatric Research Projects in Europe

Chairs: A. Nobels (*Belgium*)

H. Ryland (*United Kingdom*)

17:00 **Analysing the Social Media Impact of Psychiatric Disorders**

M.Á. Álvarez de mon (*Spain*)

17:20 **Aggressions to Psychiatric Trainees by Patients in Europe:
Assessing the Prevalence and Policy**

A. Gürcan (*Turkey*)

17:40 **European Federation of Psychiatric Trainees (EFPT) Exchange
Programme**

A. Kjellstenius (*Sweden*)

18:00 **Supported and Valued? A Trainee-led Review into Morale
and Training Within Psychiatry**

A. Till (*United Kingdom*)

18:20 **Discussion**



17:00 - 18:30



Euterpe

Symposium:

The Importance of Resilience to the Prevention of Mental Disorders

Chairs: F. Schultze-Lutter (*Germany*)

E. Meisenzahl (*Germany*)

17:00

Salutogenic Pathways to Health Promotion

B. Lindstrom (*Norway*)

17:20

Disentangling Resilience and Wellbeing

F. Schultze-Lutter (*Germany*)

17:40

Cultural Aspects of Resilience and Wellbeing

C.A. Essau (*United Kingdom*)

18:00

Enhancing Resilience in a Stepwise Primary Preventive Approach

S.J. Schmidt (*Switzerland*)

18:20

Discussion

Scientific Programme
Monday, 5 March 2018

17:00 - 18:30

Hermès

Symposium:

Promoting Mental Health Following Terrorist Attacks

Chairs: A. Fiorillo (*Italy*)
D. Bhugra (*United Kingdom*)

17:00 **Violence: Could Psychiatry Have a Role in Understanding and Eliminating It?**

L. Küey (*Turkey*)

17:20 **Acculturation and Violent Radicalisation**

D. Bhugra (*United Kingdom*)

17:40 **Utoya, Nice, Munich: Is there a psychopathological link in recent terroristic attacks?**

A. Raballo (*Italy*)

18:00 **The Role of Scientific Societies in Promoting Positive Mental Health**

A. Fiorillo (*Italy*)

18:20 **Discussion**

17:00 - 18:30

Calliope

Debate:

Assisted Suicide in Psychiatric Patients

Chair: D. Wasserman (*Sweden*)

17:00 **Pro**

J. Vandenberghe (*Belgium*)

17:45 **Con**

P. Courtet (*France*)



EUROPEAN
PSYCHIATRIC
ASSOCIATION

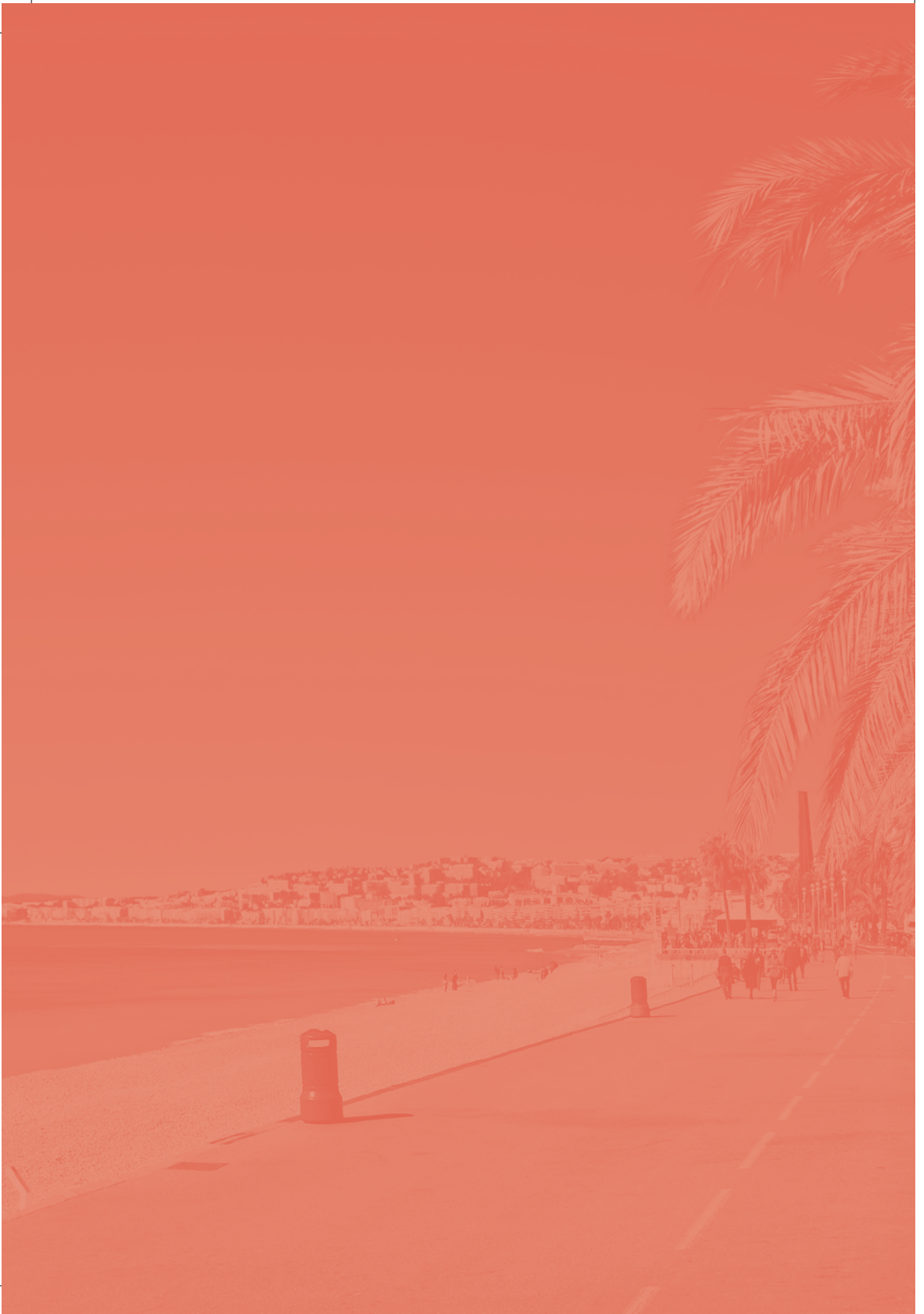


EPA 2018
26th
EUROPEAN
CONGRESS
OF PSYCHIATRY

SCIENTIFIC
PROGRAMME

TUESDAY,
6 MARCH 2018

Scientific Programme
Tuesday, 6 March 2018





SCIENTIFIC PROGRAMME TUESDAY, 6 MARCH 2018

8:00 - 9:30

Athena

Symposium:

Molecular and Brain Imaging Biomarkers of Response to Lithium Treatment

Chairs: F. Bellivier (*France*)
D. Cousins (*United Kingdom*)

- 8:00 **The European Network on Biomarker of Lithium Response (R-LiNK)**
F. Bellivier (*France*)
- 8:20 **The Development and Application of ⁷Li-MRI to Determine
the Distribution of Lithium in the Brain**
D. Cousins (*United Kingdom*)
- 8:40 **Transcriptomics and miRNomics Combining Analyses in
Lymphoblastoid Cell Lines of Bipolar Patients: Identified
Networks Associated With Treatment Response**
A. Cattaneo (*Italy*)
- 9:00 **DNA Methylation Signatures of Lithium Response**
C. Marie-Claire (*France*)
- 9:20 **Discussion**

Scientific Programme
Tuesday, 6 March 2018

8:00 - 9:30

EECP

Clio

EECP Training Workshop:

Prevention of Mental Health Disorders

Chairs: O. Kazakova (*Belarus*)
J. Beezhold (*United Kingdom*)

8:00

The Art of Prevention

N. Sartorius (*Switzerland*)

8:20

Effective Prevention Programmes in Childhood

K. Wahlbeck (*Finland*)

8:40

Prevention of Suicide and Self-Harm Behaviour

M. Nordentoft (*Denmark*)

9:00

Prevention of Substance Misuse

G. Dom (*Belgium*)

9:20

Discussion

8:00 - 9:30

Thalie

Symposium:

Combination of Biomarkers and Epigenetic Signatures: Impact on Psychiatric Disorders and Treatment Response

Chairs: J. Samochowiec (*Poland*)
N. Ramoz (*France*)

8:00

Cortisol Secretion and Specific Methylation Profiles: Biomarker of Conversion to Schizophrenia?

O. Kebir (*France*)

8:22

Prenatal Suffering and Epigenetic Signatures of Relevance for Neurodevelopmental Disorders: A Study Based on an Informative Twin Cohort

L. Fañanás (*Spain*)

8:44

Levels of non-coding microRNAs during antidepressant treatments: New biomarkers of positive response

Anthony Zannas (*Germany*)

9:06

Neuropeptide Concentrations and Epigenetic Profiles of Patients Who Remitted from Anorexia Nervosa: Prognostic Biomarkers?

N. Ramoz (*France*)



8:00 - 9:30

Erato

Workshop:

How do the EPA, WPA and WHO Respond to the Mental Health Consequences of Forced Displacement?

Organised by the EPA Task Force on Needs of Refugee and Asylum Seeker Patients in Europe

Chairs: M. Carisius Kastrup (*Denmark*)
O. Andlauer (*United Kingdom*)

8:00 **Activities and Initiatives of the EPA**

L. Küey (*Turkey*)

8:20 **Activities and Initiatives of the WPA**

H. Herrman (*Australia*)

8:40 **Evidence On Mental Health Care for Forcibly Displaced Migrants: A Review in Collaboration with WHO Europe**

D. Giacco (*United Kingdom*)

9:00 **Discussion**

8:00 - 9:30

Euterpe

Symposium:

Revision of the International Classification of Diseases – State of the Art in ICD-11 Field Studies

Chairs: W. Gaebel (*Germany*)
G. Reed (*Switzerland*)

8:00 **Results from Recent ICD-11 Field Studies in Germany**

W. Gaebel (*Germany*)

8:20 **Current Developments in Overall ICD-Revision on Mental, Behavioural or Neurodevelopmental Disorders**

G. Reed (*Switzerland*)

8:40 **Personality Disorders in ICD-11: Current Status**

S. Herpertz (*Germany*)

9:00 **ICD-11 and the Future of Disease Classification in Psychiatry**

M. Maj (*Italy*)

9:20 **Discussion**

Scientific Programme
Tuesday, 6 March 2018

8:00 - 9:30

Hermès

Symposium:

New Challenges in the Treatment of Negative Symptoms in Schizophrenia

Chairs: S. Galderisi (*Italy*)
S. Dollfus (*France*)

- 8:00 **Pathophysiology of Negative Symptoms - Current Developments and their Implications for Treatment**
S. Kaiser (*Switzerland*)
- 8:20 **What Are the Best Assessments to Target Negative Symptoms in Clinical and Research Practices?**
S. Dollfus (*France*)
- 8:40 **Pharmacological Treatment of Negative Symptoms in Schizophrenia**
I. Bitter (*Hungary*)
- 9:00 **Cognitive Behavioural Therapy of Negative Symptoms in Schizophrenia**
L. Lecardeur (*France*)
- 9:20 **Discussion**

8:00 - 9:30



Calliope

Symposium:

From New Psychotropic Drugs to Psychedelic Medicine: Risks and Challenges of Research Chemicals in Psychiatry

Chairs: F. Kiefer (*Germany*)
A. Schellekens (*The Netherlands*)

- 8:00 **Renaissance of Serotonergic Hallucinogens in Psychiatry**
B. Quednow (*Switzerland*)
- 8:20 **Gamma-Hydroxybutyric Acid (GHB): Between Euphoria and Dependence**
H. Beurmanjer (*The Netherlands*)
- 8:40 **Ibogaine as an Anti-Addiction Agent**
A. Schellekens (*The Netherlands*)
- 9:00 **MDMA as a Treatment Targeting Addictive Processes**
B. Sessa (*United Kingdom*)
- 9:20 **Discussion**



8:00 - 9:30

Galliéni

Oral Communications 9:

Suicidology and Suicide Prevention / Substance-Related and Addictive Disorders / Women, Gender and Mental Health

- 8:00 **Stressful Exposure to the Public in the Workplace is Associated with Alcohol, Tobacco and Cannabis Use: Findings from the Large Population-Based Constances Cohort**
G. Airagnes (*France*)
- 8:05 **Thyroid Axis Functioning in Patients With High Suicide Risk**
B. Berentaitė (*Lithuania*)
- 8:10 **Perceived Stigma as a Potential Moderator of Treatment Outcome in Persons with Gender Dysphoria: A Two-year Follow-up Study**
G. Castellini (*Italy*)
- 8:15 **Differential Association Between Cytokines and Cerebral Activations During Experience of Social Exclusion**
I. Conejero (*France*)
- 8:20 **Case-Control Study of Suicide in Children and Young People using Linked Primary and Secondary Routinely Collected Electronic Health Records**
M. Del Pozo Banos (*United Kingdom*)
- 8:25 **The Influence of Mass Media on Body Satisfaction in Young Females: The Role of Emotional Reappraisal**
O. Dobrushina (*Russia*)
- 8:30 **Characteristics of Rural Suicide in Romania**
M.M. Dumitru (*Romania*)
- 8:35 **Role of Dopamine Transporter ((DAT)) in Alcohol Dependence – a Genetic Association and Imaging Study**
T. Grover (*India*)
- 8:40 **Live Stream Suicide**
M. Guimarães (*Portugal*)
- 8:45 **Personality Traits and Genetics as Risk Factors for Suicidality in Depressed Patients**
M. Hambrich (*Romania*)

Scientific Programme
Tuesday, 6 March 2018

- 8:50 **Psychopathological Characteristics and Adverse Childhood Events Are Differentially Associated with Suicidal Ideation and Suicidal Acts in Mood Disorders**
D. Janiri (*Italy*)
- 8:55 **Novel Triple Opioid Receptors Antagonist Ondelopran (LY2196044) for Alcohol Dependence Phase Iii Study: Female Subjects Subgroup Efficacy and Safety Analysis**
E. Mukhametshina (*Russia*)
- 9:00 **Adherence to Methadone Maintenance Treatment and Associations with Violent and Non-Violent Offending: Results from a 17-year Longitudinal Cohort Study of Canadian Provincial Offenders**
A. Russolillo (*Canada*)
- 9:05 **The Association Between Act-Belong-Commit Indicators and Problem Drinking Among Older Irish Adults: Findings From a Prospective Analysis of the Irish Longitudinal Study on Ageing (TILDA)**
Z. Santini (*Denmark*)
- 9:10 **Schizophrenia and Pregnancy**
L. Simoila (*Finland*)
- 9:15 **Characteristics and Risk Factors for Suicide Among Japanese College Students**
C. Uchida (*Japan*)
- 9:20 **Relationship Between Suicidality and Thyreotropic Axis Activity**
S. Vuk Pisk (*Croatia*)
- 9:25 **Specific Alterations in RNA Editing Blood Biomarkers to Predict Future Suicide Attempts**
D. Weissmann (*France*)

8:00 - 11:30



Risso 6A

EPA Course 14:

The ABCs of the Clinical-Diagnostic Interview

Chairs: P. Handest (*Denmark*)
A. Raballo (*Italy*)



8:00 - 11:30



Risso 6C

EPA Course 15:

Useful and Free Open Science Tools to Do Research in Psychiatry

Chair: T. Gargot (*France*)

9:30 - 10:00

Exhibition

Coffee Break, e-Poster Viewing and Visit the Exhibition

10:00 - 11:30

Athena

Debate:

Disclosing a Mental Disorder: Do the Advantages Outweigh the Disadvantages?

Chair: A. Fiorillo (*Italy*)

10:00

Pro

S. Evans-Lacko (*United Kingdom*)

10:45

Con

S. Farooq (*United Kingdom*)

10:00 - 11:30



Clio

EECP Training Workshop:

Sexual Psychotherapy

Chairs: M. Rojnic Kuzman (*Croatia*)
O. Andlauer (*United Kingdom*)

10:00

Sexual Therapy in the 21st Century

G. Arbanas (*Croatia*)

Scientific Programme
Tuesday, 6 March 2018

10:00 - 11:30



Thalie

Symposium:

Using Technology to Respond to the Mental Health Needs For the Mentally Ill Worldwide: Mobile Devices, Telemedicine, Outcomes Management and Virtual Reality

Chair: D. Mucic (*Denmark*)

- 10:00 **Introduction on the Development in E-health Technology and Virtual Health**
M. Krausz (*Canada*)
- 10:20 **Advances in mobile mental health: Opportunities and implications for the spectrum of e-behavioural health services**
D. Hilty (*USA*)
- 10:40 **The Use of a Telemedicine Model and Its Logistics to Reach as Many European Refugees as Possible**
D. Mucic (*Denmark*)
- 11:00 **Virtual reality in the treatment of fear of heights and other anxiety disorders - Polish experience**
K. Krysta (*Poland*)
- 11:20 **Discussion**

10:00 - 11:30

Erato

Oral Communications 10:

Schizophrenia and Other Psychotic Disorders - Part II / Classification of Mental Disorders / E-Mental Health / Pain and Treatment Options

- 10:00 **Prevalence and Predictors of Social Cohesion and Its Association with Mental Health in India**
B. Ali (*India*)
- 10:05 **Prevalence and Predictors of Mental Health Disorder in India: A Cross-sectional Study**
B. Ali (*India*)
- 10:10 **Cannabis Use and Clinical Correlates in Patients with an At-risk Mental State and First Episode of Psychosis**
K. Beck (*Switzerland*)



- 10:15 **Comparison of Long-Term Treatment Outcomes in Men and Women with Schizophrenic Psychoses over a Period of 20 years. Prospective Study**
A. Cechnicki (*Poland*)
- 10:20 **Clinical and Rehabilitation Treatment Outcomes of Patients with Severe Schizophrenia in a Comprehensive, Case Managed Programme. A 7-year Follow-up**
S. Diaz Fernande (*Spain*)
- 10:25 **Effect of Lurasidone on Cognition in Adolescents with Schizophrenia: A One-year Interim Analysis of a 2-year Open-label Extension Study**
R. Goldman (*USA*)
- 10:30 **Aminoacylase-1: A New Potential Biomarker For Schizophrenia / A Preliminary Study**
D. Göverti (*Turkey*)
- 10:35 **Role of Orexinergic Neuron on Ketamine-Induced Analgesia**
K. Hirota (*Japan*)
- 10:40 **PDE7B, NMBR and EPM2A Variants and Schizophrenia: A Case-control and Pharmacogenetics Study**
T. Jun (*South Korea*)
- 10:45 **Psychopathy, Impulsivity and Trait Aggression as Predisposing Factors to Violence in Schizophrenia and in the General Population: A Profile Analysis**
M. Krakowski (*USA*)
- 10:50 **Validation of a Scale of Autonomy in Patients with Schizophrenia in Remission**
M. Morozova (*Russia*)
- 10:55 **Personality Functioning and Long-Term Results of Treatment in Remitted Patients with Schizophrenia**
M. Morozova (*Russia*)
- 11:00 **The Effectiveness of the Long-Acting Injections of Second Generation Antipsychotics: A 54-month Follow-up Study of Risperidone Long-Acting Injection vs Paliperidone Palmitate One-month Formulation**
R. Navarro Pablo (*Spain*)

- 11:05 **ICD-11 Field Studies On Gender Incongruence: Evidence From African, Arab, European and Latin American Countries for Removing Transgender Categories From the Chapter On Mental Disorders**
R. Robles (*Mexico*)
- 11:10 **A Randomized Clinical Trial of Computerized Cognitive Behavioural Training Using a Smart-Toy For Enhancing Cognitive Abilities of 5-7-Year Old Children**
M. Shin (*South Korea*)
- 11:15 **Safety and Effectiveness of Lurasidone in Adolescents With Schizophrenia: A One-year Interim Analysis of a 2-year Open-label Extension Study**
M. Tocco (*USA*)

10:00 - 11:30



Uranie

Symposium:

Emerging Disorders Or Their Risk Factors: What Should Be the Target of Prevention?

Chairs: E. Meisenzahl (*Germany*)
F. Schultze-Lutter (*Germany*)

- 10:00 **Indicated Prevention in Psychosis: Developmental Aspects**
F. Schultze-Lutter (*Germany*)
- 10:20 **Strategies to Identify Individuals at High Risk of Developing First Episode Mania**
J. Scott (*United Kingdom*)
- 10:40 **Prevention and Early Intervention for Borderline Personality Disorders**
M. Speranza (*France*)
- 11:00 **Need for a Transdiagnostic Approach for Prevention of Emerging Mental Disorders**
S.J. Schmidt (*Switzerland*)
- 11:20 **Discussion**



10:00 - 11:30

Euterpe

Joint Symposium with the EUFAS:

Co-Occurring Substance Use and Psychiatric Disorders: Pathogenesis and Treatment

Chairs: S. Galderisi (*Italy*)

A. Gual (*Spain*)

10:00 **Interaction Between Behavioural Inhibition and Neural Alcohol Cue-reactivity in ADHD and Alcohol Use Disorder**
S. Vollstädt-Klein (*Germany*)

10:25 **Exploring Novel Targets in the Transition From Reward to Misery in Comorbid Substance Use and Mood Disorders**
A. Batalla (*The Netherlands*)

10:50 **Addiction treatment – what is needed?**
C. Drummond (*United Kingdom*)

11:15 **EUFAS/EAR 2018 European Addiction Research Award Lecture: W. van den Brink**
Introduction by A. Gual (*Spain*)

10:00 - 11:30

Hermès

Symposium:

Neurobiology of Suicidal Behaviour

Chairs: L. Sher (*USA*)

Z. Rihmer (*Hungary*)

10:00 **The Psychoneuroendocrinology of Suicide: The Time is Ripe for Active Scientific Research**
L. Sher (*USA*)

10:20 **Oxytocin and the Pathophysiology of Suicidal Behaviour**
J. Jokinen (*Sweden*)

10:40 **Understanding the Complexity of Suicidal Behaviour: A Contribution of Structural and Functional Neuroimaging Studies**
G. Serafini (*Italy*)

11:00 **Psychopharmacological Prevention of Suicide**
Z. Rihmer (*Hungary*)

11:20 **Discussion**

Scientific Programme
Tuesday, 6 March 2018

10:00 - 11:30



Calliope

Symposium:

Recent Advances in Neurobiological Underpinnings of Developmental Processes in Major Psychiatric Disorders: From Genes to Therapeutic Response

Chairs: R. Brunner (*Germany*)

G. Zalsman (*Israel*)

- 10:00 **Psychiatric Imaging in the Lifespan: The Role of Genes, Gender and Age**
P. Brambilla (*Italy*)
- 10:20 **MicroRNA Markers in Response Prediction to SSRIs in Youth**
G. Zalsman (*Israel*)
- 10:40 **Violence and Aggression in the First Three Years of Life and Beyond: Developmental, Environmental and Biological Aspects**
M. Keren (*Israel*)
- 11:00 **A History of Childhood Adversity and Parenting Behaviour: The Mediating Role of Oxytocin Receptor Gene Polymorphisms**
R. Brunner (*Germany*)
- 11:20 **Discussion**

10:00 - 11:30

Galliéni

Oral Communications 11:

Schizophrenia and Other Psychotic Disorders - Part III / Neuroscience in Psychiatry Part II / Old Age Psychiatry Part I / Prevention of Mental Disorders Part I / Psychopharmacology and Pharmacoeconomics

- 10:00 **Exploring the Autonomic Correlates of Symptoms and Functional Difficulties in Psychosis Using Wearables**
M. Cella (*United Kingdom*)
- 10:04 **First Benzodiazepine Prescription in Relation to Onset and Duration of Untreated Illness in Schizophrenia, Mood and Anxiety Spectrum Disorders**
V. De Carlo (*Italy*)
- 10:08 **Clinical Staging: Application in Stable Community-dwelling Schizophrenia Patients**
O. Godin (*France*)



- 10:12 **Clinical Characteristics Associated with Benzodiazepines' Use in Mood Disorders**
B.M. Grancini (*Italy*)
- 10:16 **Is There an Association Between Theory of Mind Ability and Biological Rhythm Disturbances in Individuals with Schizophrenia?**
A. Kurtulmuş (*Turkey*)
- 10:20 **Impact of Childhood Trauma On Sensory Gating in Patients with First-episode Schizophrenia**
X. Li (*China*)
- 10:24 **Cognitive Profile of Healthy Siblings of Patients with First-episode Psychosis as a Candidate Endophenotype**
P. Mohr (*Czech Republic*)
- 10:28 **Mindfulness Based Childbirth and Parenting: An RCT On Effects on Stress, Depression and Biomarkers**
M. Niemi (*Sweden*)
- 10:36 **Impact of Antipsychotic Treatment On Cytokine Levels in Schizophrenia: A Meta-analysis**
B. Roméo (*France*)
- 10:40 **Saccadic Eye Movements in Clinical High-risk State for Psychosis**
M. Skuhareuskaya (*Belarus*)
- 10:44 **Action-related Language Impairments in Schizophrenia Spectrum Disorders**
D. Smirnova (*Russia*)
- 10:48 **The Place of VMAT-2 Inhibitors for the Treatment of Tardive Dyskinesia: A Meta-analysis of Randomized Controlled Trials**
M. Solmi (*Italy*)
- 10:52 **Is Stress Sensitivity a Better Marker of Risk than Ultra High Risk (UHR) for Psychosis Criteria?**
H. Stain (*United Kingdom*)
- 10:56 **Fully Automated Speech-based Frontline Screening for Dementia**
J. Tröger (*Germany*)
- 11:04 **Prediction of CYP3A Metabolic Phenotype in Patients with Ziprasidone by Blood Concentration Measurement**
Y. Zhang (*China*)

11:30 - 11:45

Exhibition

Short Break

12:30 - 13:15

Exhibition

Lunch Break, Exhibition, e-Poster Viewing and e-Poster Walks

11:45 - 12:30

Athena

Plenary Lecture:

Schizophrenia is a Myth with a Strong Genetic Component

Chair: Silvana Galderisi (*Italy*)

Speaker: R. Murray (*United Kingdom*)

13:15 - 14:45

Athena

Symposium:

Current Perspectives on Behavioural Addictions

Chairs: T. Lemenager (*Germany*)

D. Kuss (*United Kingdom*)

13:15 Fascination, Immersion and Addiction: Why We Can't Look Away about the Phenomenology of 'Excessive' Use

R. Graham (*United Kingdom*)

13:35 Social Cognitions and Craving Reactions in Internet-communication Disorder

E. Wegmann (*Germany*)

13:55 Treatment of Internet Gaming Disorder

D. Kuss (*United Kingdom*)

14:15 Comorbidities and Psychological Correlates of Internet Addiction with and Without Communication Features

T. Lemenager (*Germany*)

14:35 Discussion



13:15 - 14:45

Clio

Symposium:

Behavioural Addictions: Motivations and Classification Updates

Chairs: G. Dom (*Belgium*)
T. Kurimay (*Hungary*)

13:15 **Similarities and Differences in the Motivational Background of Substance Use and Behavioural Addictions**

Z. Demetrovics (*Hungary*)

13:35 **Physical Exercise, Motivation, Exercise Addiction**

T. Kurimay (*Hungary*)

13:55 **Challenges in diagnosis and classification of gaming and gambling disorders**

J.B. Saunders (*Australia*)

14:15 **Behavioural Addictions, the Role of Psychiatric Comorbidity**

K. Mann (*Germany*)

14:35 **Discussion**

Scientific Programme
Tuesday, 6 March 2018

13:15 - 14:45

Thalie

Symposium:

**New Perspectives in Negative Symptoms: A Transnosographic Approach to
Diagnosis and Treatment**

Chairs: A. Raballo (*Italy*)

L. Valmaggia (*United Kingdom*)

13:15 **Negative Symptoms across Diagnostic Categories:
Implications For Their Conceptualisation and Assessment**
A. Mucci (*Italy*)

13:35 **Negative Symptoms in At-Risk Mental State (ARMS) for
Psychosis: Implications for the Outcome**
L. Valmaggia (*United Kingdom*)

13:55 **Negative Symptoms in Schizophrenia-Spectrum and
Affective Psychoses: Presentation, Course and Correlates**

14:15 **Treatment of Negative Symptoms across Diagnostic
Categories: Achievements and Challenges**
S. Kaiser (*Switzerland*)

14:35 **Discussion**



13:15 - 14:45



Erato

Workshop:

Women's Mental Health: Insights from European Countries

Chairs: H. Herrman (*Australia*)

N. Semenova (*Russia*)

- 13:15 **Women's Mental Health in the UK: Yesterday, Today and Tomorrow**
J. Burns (*United Kingdom*)
- 13:35 **Women's Mental Health: Insights from the WMH Section of
the Russian Society of Psychiatrists**
N. Semenova (*Russia*)
- 13:55 **Women's Mental Health in Turkey: Challenges and Insights
from the WMH Section of the Psychiatric Association of Turkey**
E. Sönmez (*Turkey*)
- 14:15 **Women's Mental Health in Slovakia**
L. Vavrusova (*Slovakia*)
- 14:35 **Discussion**

Scientific Programme
Tuesday, 6 March 2018

13:15 - 14:45

Uranie

Workshop:

Schizotypy: Current Translational Perspectives From Basic Neuroscience to Transdiagnostic Clinical Phenotypes

Chairs: I. Nenadic (*Germany*)
N. Barrantes-Vidal (*Spain*)

- 13:15 **Cognitive, Neuroimaging and Pharmacological Studies of Schizotypy: An Overview and Introduction**
U. Ettinger (*Germany*)
- 13:35 **Psychosocial Risk Factors, Gene-Environment Interactions, and the Role of Schizotypy in the Psychosis Spectrum**
N. Barrantes-Vidal (*Spain*)
- 13:55 **Emotional Processing and Schizotypy: Multimodal Findings in Support of the Neurobiological Continuum Hypothesis**
G. Modinos (*United Kingdom*)
- 14:15 **Schizotypy in the Affective Disorders Spectrum: From Clinical Phenotypes to Biological Models**
I. Nenadic (*Germany*)
- 14:35 **Discussion**



13:15 - 14:45



Euterpe

Symposium:

Suicidal Behaviour in the Vulnerable Populations: Focus on Migrants

Chairs: M. Sarchiapone (*Italy*)
M. Schouler-Oçak (*Germany*)

- 13:15 **Migrant's Suicidal Behaviours: A Transcultural Perspective**
C. Gramaglia (*Italy*)
- 13:35 **Suicide Attempt Rates and Intervention Effects in Women of Turkish Origin in Berlin**
M. Schouler-Oçak (*Germany*)
- 13:55 **Social and Ethno-Cultural Aspects of the Dynamics of the Rate of Suicides in the CIS Countries (1990 – present time)**
B. Polozhy (*Russia*)
- 14:15 **Attempted Suicide among South Asians in the UK**
D. Bhugra (*United Kingdom*)
- 14:35 **Discussion**

13:15 - 14:00

Hermès

State of the Art Lecture:

Planning Ahead for Acute Mental Health Crises: Methods and Outcomes

Chair: M. Amering (*Austria*)
Speaker: C. Henderson (*United Kingdom*)

Scientific Programme
Tuesday, 6 March 2018

13:15 - 14:45

Calliope

Workshop:

How Can We Improve Adherence to Treatment in Psychiatric Disorders?

Chairs: S. Galderisi (*Italy*)
M. Tournier (*France*)

- 13:15 **How Can We Improve Adherence to Treatment in Psychotic Disorders?**
I. Bitter (*Hungary*)
- 13:30 **How Can We Improve Adherence to Treatment in Bipolar Disorders?**
A. Erfurth (*Austria*)
- 13:45 **How Can We Improve Adherence to Treatment in Eating Disorders?**
P. Monteleone (*Italy*)
- 14:00 **How Can We Improve Adherence to Treatment in Anxiety Disorders?**
S. Pallanti (*Italy*)
- 14:15 **How Can We Improve Adherence to Treatment in Depression?**
M. Tournier (*France*)
- 14:30 **Discussion**

13:15 - 14:45

Galliéni 5

Oral Communications 12:

Eating Disorders / Migration and Mental Health of Immigrants / Neuroimaging / Neuroscience in Psychiatry Part III / Old Age Psychiatry Part II / Prevention of Mental Disorders Part II / Quality Management

- 13:15 **The Impact of Childhood Trauma on Brain Structure and Stress Response: Differences Between First-episode Psychosis Patients and Healthy Controls**
S. Ciufolini (*United Kingdom*)
- 13:20 **The Role of Spirituality in the Care of Older People with Mental Illness**
S. Curran (*United Kingdom*)
- 13:25 **Brain Health Complications of Diabetes Mellitus: Awareness Among Individuals with Diabetes and the General Population in Ireland**
C. Dolan (*Ireland*)



- 13:30 **Differentiating Constitutional Thinness From Anorexia Nervosa in DSM 5 Era**
N. Germain (*France*)
- 13:35 **Hunger Feeling in Anorexia Nervosa and Ghrelin Plasma Level**
N. Germain (*France*)
- 13:40 **Restoring Fertility to Persistent Amenorrheic Weight-recovered Anorexia Nervosa Patients: Benefice and Risk**
N. Germain (*France*)
- 13:45 **Exposure to Trauma, Post Traumatic Stress Disorder and Depression Symptoms in Eritrean Refugees Living in Ethiopia**
B. Getnet (*Ethiopia*)
- 13:50 **Cardio-metabolic Monitoring in Patients on Antipsychotics in an Inner City New York City Adult Outpatient Clinic: What Have We Learned So Far**
S. Gunturu (*USA*)
- 13:55 **National Model for Mental Health Work Among Refugees and Asylum Seekers in Finland**
S. Jokela (*Finland*)
- 14:00 **Building a Prognosis Model for Anorexia Nervosa: A Machine Learning Approach**
C. Kan (*United Kingdom*)
- 14:05 **Automated Analysis of Verbal Fluency Ability for Detection of Cognitive Impairment in Elderly People**
A. König (*France*)
- 14:10 **The Effectiveness of Psychosocial Interventions for Survivors of Natural Disasters: A Systematic Review**
S. M Selveindran (*United Kingdom*)
- 14:15 **Alcohol Use and Dependence Among Older Adults in Canadian Home Care: Is It Getting Better or Worse Over Time?**
E. Neufeld (*Canada*)
- 14:20 **Adult Attachment Styles and Cortisol Awakening Response in Eating Disorders**
F. Pellegrino (*Italy*)
- 14:25 **An Analysis of Pharmaceutical Interventions in a Psychiatric Hospital: A 5-month Retrospective Study**
P. Rhodes (*France*)

- 14:30 **Social Cognition as a Hub Between Creative Thinking and Affective-cognitive Dysfunction in Subjects with Traits of the Psychotic Spectrum**
H. Santamaria Garcia (*Colombia*)
- 14:35 **Higher Cortical Dendrite Density in Patients with Bipolar Disorder Undergoing Lithium Therapy**
S. Sarrazin (*France*)
- 14:40 **A Randomised Sham-Controlled Feasibility Trial of Repetitive Transcranial Magnetic Stimulation in Outpatients with Severe and Enduring Anorexia Nervosa**
U. Schmidt (*United Kingdom*)
- 14:45 **Perception and Satisfaction of Patients Versus Staffs in Psychiatry Wards**
S.M. Zamir (*Iran*)
- 14:50 **Effects of Maternal Stress During Different Gestational Periods on the Emotion Development in Adult Rat Offspring**
F. Zhen (*China*)

14:00 - 14:45

Hermès

State of the Art Lecture:

Youth Mental Health: Transition from Child to Adult Mental Health Services

Chair: J. Beezhold (*United Kingdom*)

Speaker: P. McGorry (*Australia*)



EUROPEAN
PSYCHIATRIC
ASSOCIATION



EPA 2018
26th
EUROPEAN
CONGRESS
OF PSYCHIATRY

INDEX OF AUTHORS

INDEX OF
AUTHORS





INDEX OF AUTHORS

A

Abdelrahman, A.	32	Barbosa, A.	26
Adamis, D.	46	Bares, M.	72
Agyapong, V.	72	Bar, K.	65
Airagnes, G.	95	Baron, E.	65
Albert, U.	83	Barrantes-Vidal, N.	108
Alfimova, M.	76	Bartova, L.	73
Ali, B.	98	Baryshnikov, I.	78
Al Joboory, S.	60	Basili, R.	71
Allauze, E.	39	Batalla, A.	101
Al Shekaili, M.	46	Becirovic, E.	60
Álvarez de mon, M.Á.	86	Beck, K.	98
Amaral, A.P.	78	Beezhold, J.	53, 92, 112
Amering, M.	34, 35, 72, 81, 109	Bellivier, F.	51, 91
Andlauer, O.	93, 97	Berentaitè, B.	95
Aragona, M.	69	Berrouguet, S.	41
Arango, C.	49, 54	Bessieres, E.	77
Araújo, A.I.	78	Beurmanjer, H.	94
Arbanas, G.	97	Bhugra, D.	26, 69, 82, 88, 109
Arici, C.	39	Billot, R.	41
Asherson, P.	25, 54, 67	Birchwood, M.	29
Azzaoui, F.	78	Bitter, I.	45, 75, 94, 110

B

Baeken, C.	35, 79	Bokhan, N.	60
Baier, S.	60	Borbé, R.	34
Bailey, S.	54	Borsboom, D.	44, 74
Balazs, J.	67	Brambilla, P.	59, 80, 102
Bani-Fatemi, A.	84	Brunner, R.	102
Barabassy, A.	76	Brunovsky, M.	39
		Bruun, H.	54
		Burns, J.	107

C

Caetano, F.	73	Demetrovics, Z.	105
Calati, R.	84	Dervaux, A.	47
Cardoner, N.	52	Desaunay, P.	78
Carisius Kastrup, M.	25, 64, 85, 93	Dias Alves, M.	39
Carli, V.	34, 70	Diaz Fernande, S.	99
Casanova Dias, M.	85	Diefenbacher, A.	26
Cassis, T.	39	di Luca, M.	54
Castellini, G.	95	Dobrushina, O.	84, 95
Castilla-Puentes, R.	46	Doerr-Zegers, O.	69
Cattaneo, A.	91	Dolan, C.	110
Cechnicki, A.	99	Dollfus, S.	94
Cella, M.	56, 102	Dom, G.	30, 62, 82, 92, 105
Ciufolini, S.	110	Doucet, G.	36
Clerici, M.	30	Drummond, C.	101
Conejero, I.	95	Dubois, B.	63
Coppola, F.	39	Dumitru, M.M.	95
Cordova, R.	32		
Coroa, M.	78		
Correll, C.	45, 82		
Courtenay, K.	68, 82		
Courtet, P.	50, 64, 88		
Cousins, D.	91		
Crunelle, C.L.	30		
Curran, S.	110		

D

David, R.	63
De Backer, L.	65
Debnath, M.	84
De Carlo, V.	102
Deister, A.	43
Dell'Osso, B.	83
Del Pozo Banos, M.	95

E

Eberhard-Gran, M.	45
Eberhard, J.	39
Elstner, S.	68
Erfurth, A.	110
Espinos, U.	39
Essau, C.A.	87
Etain, B.	51
Ettinger, U.	108
Evans-Lacko, S.	53, 74, 97

F

Fañanás, L.	59, 92
Farooq, S.	97
Faurholt-Jepsen, M.	52
Fernández de Bobadilla, J.	37



Fineberg, N.	83	Graham, R.	104
Fiorillo, A.	26, 29, 42, 53, 66, 88, 97	Gramaglia, C.	109
Fischer, E.K.	84	Grancini, B.M.	103
Florence, S.	61	Grèzes, J.	64
Fontaine, A.	76	Grover, T.	95
Frajerman, A.	61	Gruber, O.	49
Frangou, S.	26, 36, 59, 66, 81	Gual, A.	101
Frankova, I.	31, 76	Guillaume, S.	50
G		Guillodo, E.	41
Gaebel, W.	24, 32, 56, 75, 93	Guimarães, M.	95
Galderisi, S.	23, 24, 32, 35, 49, 54, 64, 72, 81, 83, 94, 101, 104, 110	Gunturu, S.	111
Garcia-Portilla, M.P.	80	Gürçan, A.	86
Gargot, T.	97	H	
Gariépy, G.	47	Hambrich, M.	95
Georgescu, D.	26	Hamza, N.	84
Germain, N.	111	Handest, P.	96
Getnet, B.	111	Hanon, C.	30, 43, 82
Giacco, D.	30, 93	Hanyu, C.	77
Girod, C.	37	Harfush, S.	78
Godin, O.	102	Hargarter, L.	77
Goethals, K.	80	Haro, J.M.	42
Goldman, R.	39, 40, 99	Hegerl, U.	52
Golz, L.	77	Heim, E.	55
Gómez Alemany, T.	49	Heinz, A.	60
Gomez, C.	49	Henderson, C.	82, 109
Gomez-Coronado, N.	49	He, P.	61
Gómez Sánchez-Lafuente, C.	77, 84	Hermans, M.	31, 52
Gondek, T.	49	Hernández-Èvole, H.	84
Gonzalez-Blanco, L.	77	Herpertz, S.	93
Gorwood, P.	24, 44, 72, 83	Herrman, H.	23, 32, 35, 67, 82, 93, 107
Göverti, D.	99	Heun, R.	26, 48
Graef-Calliess, I.T.	34, 55, 64	Hilty, D.	98
		Hirota, K.	99

Hjerrild, S.	73	Kim, H.	47
Honer, W.G.	65	Kiran, T.	73
Howard, L.	44, 50, 67	Kjellstenius, A.	86
Hulshoff Pol, H.	65	Klazinga, N.	23

I

Ismayilova, L.	61	Kooij, S.	67
Itoh, H.	37	Krakowski, M.	99
Ivanovs, R.	73, 78	Krane-Gartiser, K.	51

J

Jakubczyk, A.	62	Krupchanka, D.	60, 83
Jamilian, H.	73	Krysta, K.	68, 98
Janiri, D.	96	Küey, L.	25, 31, 64, 74, 88, 93
Javed, A.	32	Kugathasan, P.	77
Jokela, S.	111	Kurimay, T.	24, 43, 67, 105
Jokinen, J.	101	Kurtulmuş, A.	103
Joshi, G.	61	Kuss, D.	104
Jovanovic, N.	67	Kwon, T.H.	61
Jun, T.	99	Kyriakopoulos, M.	80

K

Kahn, R.	75	Laban, K.	55
Kaiser, S.	94, 106	Lampis, J.	37
Kan, C.	111	Lanctot, K.	63
Kärkkäinen, H.	23, 60	Langguth, B.	79
Kas, M.	49	Lasalvia, A.	53
Kasper, S.	75	Lassemo, E.	61
Kazakova, O.	92	Laux, G.	48
Kebir, O.	92	Lazary, J.	84
Keren, M.	102	Lecardeur, L.	94
Khazaal, Y.	41	Lemenager, T.	104
Kiefer, F.	94	Lentoor, A.	47

L



Leucht, S.	45
Lindner, R.	38
Lindstrom, B.	87
Lipskaya-Velikovsky, L.	84
Liu, R.	73
Li, X.	103
Lönnqvist, J.	70
Luquiens, A.	41
Lydall, G.	30, 46

M

Maatallah, H.	47
Maia, A.	77
Maj, M.	42, 93
Malchow, B.	65
Manera, V.	63
Männikkö, M.	23, 60
Mann, K.	105
Maric Bojovic, N.	53
Marie-Claire, C.	91
Markova, E.	84
Martensen, L.K.	61
Martín Carrasco, M.	48
Matei, C.	49
Matthews, T.	64
Matthys, F.	30
McDaid, D.	53
McDaid, S.	32
McDonald, E.	45
McGorry, P.	30, 82, 112
McGovern, P.	60
McIntosh, A.	66
Mckimm, J.	65
Meisenzahl, E.	87, 100

Melchior, M.	85
Menchon, J.	83
Meyer-Lindenberg, A.	64, 80
Micali, N.	36
Misiak, B.	85
Missmahl, I.	55
Mittendorfer-Rutz, E.	43
Moamai, J.	77
Modinos, G.	108
Mohr, P.	103
Mondelli, V.	50
Monteleone, A.M.	50
Monteleone, P.	50, 110
Moorey, S.	25, 44
Morgan, C.	33
Morken, G.	51
Morozova, M.	99
Mowla, A.	37
Mucci, A.	26, 56, 72, 106
Mucic, D.	46, 98
Muhlig, Y.	36
Mukhametshina, E.	96
Muñoz Martínez, V.	47
Murphy, S.	49
Murray, R.	33, 43, 74, 83, 104
Musalek, M.	30

N

Nahavandi, A.	85
Nas, C.	24
Navarro Pablo, R.	99
Nenadic, I.	59, 108
Netten, A.	23
Neufeld, E.	111

Nguyen, M.H.	61
Niemi, M.	103
Nobels, A.	86
Nordentoft, M.	56, 74, 75, 92
Notredame, C.	47

O

O'Connor, C.	47
Olié, E.	64
Opris, S.	73

P

Padberg, F.	35, 79
Palao Vidal, D.J.	52
Palenicek, T.	38
Pallanti, S.	110
Pallaskorpi, S.	40
Palma-Gudiel, H.	37
Panov, D.	37
Pantovic, M.	40
Pariwatcharakul, P.	78
Pascual, J.R.	37
Pawluski, J.	45
Peetso, T.	24
Pellegrino, F.	111
Pereira Sánchez, V.	49
Perera, B.	68
Perry, B.	77
Pervichko, E.	47, 85
Pinto da Costa, M.	46
Podina, I.	37
Polozhy, B.	109
Porrás Segovia, A.	73

Portellano Ortiz, C.	73
Poulet, E.	35, 79
Priebe, S.	34
Provenzano, U.	47
Puschner, B.	23
Pushkar, P.	31

Q

Quattrone, D.	33, 76
Quednow, B.	94

R

Raballo, A.	69, 88, 96, 106
Rachid, F.	79
Radu, G.	65
Ramos-Quiroga, J.A.	25
Ramoz, N.	92
Ramsay, H.	68
Reed, G.	82, 93
Rhodes, P.	111
Riecher-Rössler, A.	53, 81
Rihmer, Z.	101
Riper, H.	32
Robert, P.	63
Robles, R.	100
Rojnic Kuzman, M.	29, 97
Roméo, B.	103
Rossi, A.	72
Rossi, M.	68
Russolillo, A.	96
Ryland, H.	31, 76, 86



S

Sachs, G.	56
Sahbaz, C.	85
Saliba, E.	61
Samochowiec, J.	92
Sampogna, G.	53
Sani, G.	40
Santamaría García, H.	112
Santini, Z.	96
Sarchiapone, M.	34, 70, 109
Sarrazin, S.	112
Sartorius, N.	54, 60, 74, 92
Saunders, J.B.	105
Sauvaget, A.	79
Sayous, R.	85
Schellekens, A.	62, 94
Schifano, F.	29
Schiltz, K.	80
Schmidt, S.J.	71, 87, 100
Schmidt, U.	29, 54, 112
Schofield, P.	33
Schouler-Oçak, M.	25, 31, 50, 55, 64, 85, 109
Schultze-Lutter, F.	71, 87, 100
Scott, J.	51, 100
Selveindran, S. M.	111
Semenova, N.	107
Serafini, G.	74, 80, 101
Sessa, B.	94
Sher, L.	101
Shin, H.	38
Shin, M.	100
Sijbrandij, M.	55
Silva, I.	24
Simoila, L.	96

Simonetti, A.	40
Skuhareuskaya, M.	103
Smirnova, D.	103
Sobanski, E.	25
Sokoloff, P.	75
Solmi, M.	103
Sönmez, E.	31, 49, 83, 107
Soubrier, J.P.	70
Specchio, N.	54
Speranza, M.	100
Stain, H.	103
Stanghellini, G.	44, 69
Stoppe, G.	25, 38
Storman, D.	85
Strydom, A.	61
Stuhec, M.	48
Suttajit, S.	38
Sutter-Dallay, A.	85
Szulc, A.	81

T

Taib, S.	79
Tarricone, I.	33
Tepe-Bal, N.	40
Till, A.	86
Tinelli, M.	24
Tocco, M.	40, 100
Torgaard Thomsen, C.	30
Tortelli, A.	33
Toulopoulou, T.	66
Tournier, M.	110
Treasure, J.	44, 52, 80
Tröger, J.	103

U

Uchida, C.	96
Underwood, J.	47

V

Vaiva, G.	70
Valmaggia, L.	71, 106
van Bronswijk, S.	79
Vandenberghe, J.	44, 88
van den Brink, W.	30, 44, 62, 82
van der Feltz Cornelis, C.	38, 70
van der Gaag, R.J.	54
van der Ven, E.	33
van Eeden, W.	74
van Haren, N.	66
Vann Jones, S.	79
Vavrusova, L.	54, 107
Ventriglio, A.	26
Ventura, J.	26
Vieta, E.	44, 50
Vita, A.	56
Vlijter, O.	32
Vollstädt-Klein, S.	101
Vuk Pisk, S.	96

W

Wagner, S.	79
Wahlbeck, K.	92
Wang, X.	79
Wan, Y.	47
Wasserman, D.	29, 35, 54, 74, 88
Wegmann, E.	104
Weissmann, D.	96
Westman, J.	43
Wieck, A.	34, 45
Winiewicz, D.	74
Wittchen, U.	42
Wojnar, M.	62
Wykes, T.	42

Y

Yu, W.	38
--------	----

Z

Zalsman, G.	67, 102
Zamir, S.	46
Zamir, S.M.	40, 112
Zammit, S.	36
Zannas, A.	92
Zeltner, L.	30
Zeppugno, P.	38
Zhang, Y.	103
Zhen, F.	112
Zullino, D.	71



EUROPEAN
PSYCHIATRIC
ASSOCIATION



EPA 2018
26th
EUROPEAN
CONGRESS
OF PSYCHIATRY

COMPANY AND EXHIBITION GUIDE

COMPANY AND
EXHIBITION GUIDE

ACKNOWLEDGEMENTS

EPA wishes to express its gratitude for the contribution and support of the following healthcare industries:

PLATINUM SPONSORS



GOLD SPONSORS



SILVER SPONSORS



BRONZE SPONSORS



EXHIBITORS



INDUSTRY SUPPORTED SATELLITE SESSIONS

SUNDAY, 4 MARCH 2018

13:15 – 14:45 | CALLIOPE

**Symposium: Past, present and future of
schizophrenia negative symptoms treatment**



- 13:15 – 13:20 **Negative symptoms of Schizophrenia:**
István Bitter (Hungary)
- 13:20 – 13:45 **Schizophrenia negative symptoms: A burden for patients,
caregivers and society**
Silvana Galderisi (Italy)
- 13:45 – 14:10 **Dopamine receptor partial agonism: State of the Art**
Leslie Citrome (USA)
- 14:10 – 14:35 **Treatment of schizophrenia negative symptoms: Do we have an
adequate solution?**
Stefan Leucht (Germany)

13:15 – 14:45 | HERMÈS

**Symposium: The Reality of Treatment-resistant
Depression (TRD) Today**



- Chair: Siegfried Kasper (Austria)
- 13:15 – 13:45 **Identification and diagnosis of patients with TRD**
Siegfried Kasper (Austria)
- 13:45 – 14:15 **Biomarkers for TRD: do we have strong evidence?**
Marion Leboyer (France)
- 14:15 – 14:45 **Clinical pathways for patients with TRD**
Siegfried Kasper (Austria)



13:15 – 14:45 | ATHENA

Symposium: Is it ADHD? What to look for and what to do



Chair: David Bull (UK)

13:15 – 13:20 **Welcome and overview**

13:20 – 13:40 **ADHD in adults**

Anthony Rostain (USA)

13:40 – 14:00 **ADHD - missed or misdiagnosis? What to look out for**

Larry Klassen (Canada)

14:00 – 14:15 **Guidance for treatment of ADHD in adults**

Philip Asherson (UK)

14:15 – 14:40 **Ask the Experts: Panel and delegates Q&A**

David Bull (UK), Anthony Rostain (USA), Larry Klassen (Canada),
Philip Asherson (UK), Martin Katzman (Canada)

MONDAY, 5 MARCH 2018

13:15 – 14:45 | CALLIOPE

Symposium: Insights into schizophrenia today: do the available
treatment options meet patients' and physicians' needs?



Chair: Andrea Fagiolini (Italy)

13:15 – 13:45 **Patients' and doctors' needs: common goals for a therapeutic
alliance**

Christoph Correll (Germany)

13:45 – 14:15 **Current treatment options in light of unmet clinical needs**

Stefan Leucht (Germany)

13:15 – 13:45 **Optimising patient's pharmacological journey in schizophrenia**

David Taylor (UK)

13:15 – 14:45 | ATHENA

**Symposium: Reducing relapse and mortality in schizophrenia:
myth or reality?**



Chair: John M. Kane (USA)

13:15 – 13:25 **Welcome and introduction**

13:25 – 13:50 **Relapse prevention: would this impact patients' lives?**

Eric Fakra (France)

13:50 – 14:15 **Mortality in schizophrenia: do we need to think about that now?**

Jari Tiihonen (Sweden)

14:15 – 14:40 **Communicating with patients and caregivers: the role of the
treating physician**

Giuseppe Maina (Italy)

14:40 – 14:45 **Closing remarks**

18.30 – 21.30 | Méditerranée

Interactive Educational Session: Discovering ADHD in Adults



S.T.A.R.T. Clinic (Stress, Trauma, Anxiety, Rehabilitation and Treatment)

Martin Katzman (Canada)

**MRC Social, Genetic and Developmental Psychiatry Centre,
Institute of Psychiatry**

Philip Asherson (UK)

University of Pennsylvania

Anthony Rostain (USA)

West London Mental Health Services

Susan Young (UK)

**Hospital Universitari Vall d'Hebron & Universitat Autònoma de
Barcelona**

Josep Antoni Ramos-Quiroga (Spain)



13:15 – 14:45 | HERMÈS

Symposium: Functional Recovery from Depression: Lots to THINC® About



Chair: Roger McIntyre (Canada)

- 13:15 – 13:20 **Functional recovery in depression: role of cognitive symptoms**
Roger McIntyre (Canada)
- 13:20 – 13:40 **Assessment of functional and cognitive outcomes in depression**
John Harrison (UK)
- 13:40 – 14:00 **Clinical management of cognitive symptoms in depression**
Bernhard Baune (Australia)
- 14:00 – 14:20 **A case with vortioxetine and workplace productivity in patients with depression**
Pratap Chokka (Canada)
- 14:20 – 14:40 **Questions from the audience**
- 14:40 – 14:45 **Closing remarks**

18:45 – 20:15 | HERMÈS

Symposium: From conventional antidepressant efficacy to real-world effectiveness



Chair: Eduard Vieta (Spain)

- 18:50 – 19:10 **Traditional efficacy of antidepressants: does it reflect your long-term treatment goals?**
Eduard Vieta (Spain)
- New Rigorous Preclinical Trials of Cerebrolysin for Stroke**
Michael Chopp (USA)
- 19:10 – 19:30 **Looking beyond MADRS to restore patient functioning**
Bernhard Baune (Australia)
- 19:30 – 19:50 **A case with vortioxetine and workplace productivity in patients with depression**
Pratap Chokka (Canada)
- 19:50 – 20:10 **Questions from the audience**
- 20:10 – 20:15 **Closing remarks**

TUESDAY, 6 MARCH 2018

13:15 – 13:55 | RISSO 6A-B

Educational Workshop: General principles and
particular cases in the treatment of schizophrenia



Speaker: Dr Philippe Nuss (France)

EXHIBITION FLOOR PLANS



LIST OF EXHIBITORS

Exhibitor	Booth N°
BrainsWay	17
Deymed	4B
Elsevier	1A - Shared Booth
European Brain Council	5A
European College of Neuropsychopharmacology	7
European Federation of Psychiatric Trainees	5B
European Psychiatric Association	1A - Shared Booth
French Congress of Psychiatry (CFP)	6
Gamian	19B
Gedeon Richter and Recordati S.P.A.	21 - Shared Booth
Genomind	5
International College of Neuropsychopharmacology	4A
Janssen Pharmaceutical	14
Karger	20
Lundbeck	27
Magstim	12
MagVenture	24
Pineapple Contracts	18
SEI Healthcare	3
Shire	16
Sooma	2
Soterix Medical	1
Wisepress Medical Bookshop	8
World Psychiatric Association	19A



COMPANY PROFILES

Angelini SpA

Via Amelia, 70

Roma

00181

Italy

www.angelini.it



Angelini, a private international Group, is a leader in the health and wellness area of the pharmaceutical and basic commodities sectors. Founded in Italy in the early 20th century, it now has branches in 20 countries. The company portfolio focuses mainly on pain relief, inflammation, CNS, anti-infectives, gynecology and has a strong position in the OTC market. The R&D department is currently working on several projects in the area of Pain & Inflammation Disorders, Nervous System Diseases & Disorders and Infection Control & Infectious Diseases. In the latter, R&D is active with discovery programs, including private-public projects with new Chemical Entities.

BrainsWay

19 Hartum St.

Jerusalem

9777518

Israel

Booth n° 17

www.brainsway.com



Brainsway

BrainsWay is engaged in the research, development and marketing of BrainsWay-Therapy, a medical system for non-invasive treatment of common brain disorders. The medical system developed and manufactured by the company is based on a proprietary and breakthrough technology called Deep-TMS, which can reach deeply and broadly into the brain and produce nerve stimulation or suppression. BrainsWay is currently FDA cleared for the treatment of Major-Depressive-Disorder, and has reimbursement by insurers, including both commercial and government payers, covering about 90% of the US population. The Company's systems are sold worldwide as well, with CE mark for a variety of indications including Major-Depressive-Disorder, Obsessive-Compulsive-Disorder, Smoking-Cessation, Chronic-Pain, Post-Traumatic-Stress-Disorder and more.

Congrès Français de Psychiatrie

6 Cité Paradis
PARIS
75010
France
Booth n° 6

www.congresfrancaispsychiatrie.org



The French Congress of Psychiatry (CFP) gathers an important group of persons taking care of psychiatry and mental health. It aimed to propose a national congress where all components of Psychiatry could share their scientific and theoretical background. The CFP is having one congress a year, usually at the end of November or beginning of December, and moves from one large French town to another in order to facilitate the participation of all French psychiatrists. For his 10th Edition, the CFP will take place in Nantes from Wednesday 28 November till Saturday 1st December 2018. The CFP is also one of the National Psychiatric Associations representing France in EPA's Council of NPA's, and is therefore one of its active member.

Deymed Diagnostic

Velký Dřevíč 91
Hronov
549 32
Czech Republic
Booth n° 4B

www.deymed.com



The company was founded in 1997 and its first product was developing a 32 channel EEG device which was completed and sold in 1998. In the following years additional neurology products have been developed including EMG, PSG and TMS devices. The initial sales were to the Czech Republic but soon thereafter were offered in international markets. Due to the high level of innovation and modern design of the products, Deymed has become an established worldwide leader in neurology for both clinical and research applications.



European Brain Council

Rue d'Egmont 11
Brussels
1000
Belgium
Booth n° 5A
www.braincouncil.eu



The European Brain Council (EBC) is a non-profit organisation gathering patient associations, major brain-related societies as well as industries. Established in March 2002, its mission is to promote brain research in order to improve the quality of life of those living with brain disorders in Europe. EBC's main action areas are fostering cooperation with its members organisations, promoting dialogue between scientists, industry and society, interacting with the European Commission, the European Parliament and other relevant international institution, raising awareness and promoting education on the brain and disseminating information about brain research and brain diseases in Europe.

ECNP

Bolognalaan 28
Utrecht
3584CJ
The Netherlands
Booth n° 7
www.2018.ecnp.eu



ECNP is Europe's leading independent forum for the science of CNS treatments. The ECNP Congress showcases the world's best disease-oriented brain research, annually attracting between 4,000 and 6,000 neuroscientists, psychiatrists, neurologists and psychologists. ECNP's wide range of scientific and educational activities, programmes and events make it the largest non-institutional supporter of applied and translational neuroscience research and education in Europe.

Eisai

5/6 place de l'Iris Tour Manhattan La Défense
Paris
92095
France
www.eisai.com



Therapeutical areas: Neurology: Alzheimer, Epilepsy, Lennox-Gastaut syndrome
Oncology: Breast cancer and sarcoma Psychiatry Critical Care

Elsevier

Radarweg 29
Amsterdam
1043 NX
The Netherlands
Booth n° 1A
www.elsevier.com



Elsevier is a global information analytics business that helps institutions and professionals progress science, advance healthcare and improve performance for the benefit of humanity. Elsevier publishes over 2,500 digitized journals, including the European Psychiatric Association's European Psychiatry.

European Federation of Psychiatric Trainees

20 Avenue de la Couronne
Brussels
1050
Belgium
Booth n° 5B
www.efpt.eu



The European Federation of Psychiatric Trainees (EFPT) is an umbrella organisation for National Trainee Associations (NTA) of postgraduate doctors training in psychiatry within the WHO Europe Region. The EFPT currently has 38 member organisations in 36 countries and represents many thousands of trainees. The EFPT works on a range of projects, including running a popular exchange programme, supporting the establishment of NTAs and conducting trainee-led international research.

European Psychiatric Association

15, avenue de la liberté
Strasbourg
67000
France
Booth n° 1A
www.europsy.net



With active individual members in as many as 88 countries and 42 National Psychiatric/ Association Members who represent more than 80,000 European psychiatrists, the European Psychiatric Association is the main association representing psychiatry in Europe. The EPA's activities address the interests of psychiatrists in academia, research and practice throughout all stages of career development. The EPA deals with psychiatry and its related disciplines, and focuses on the improvement of care for the mentally ill as well as on the development of professional excellence.



GAMIAN-Europe

60 rue du Trone
Brussels
1050
Belgium
Booth n° 19B
www.gamian.eu

GAMIAN-Europe, a patient-driven pan-European organisation, representing the interests of persons affected by mental health illness and advocates for their rights. GAMIAN-Europe was established in 1998 as a representative coalition of patient organisations. Putting the patient at the centre of all issues of the EU healthcare debate, the organisation aims to bring together and support the development and policy influencing capacity of local, regional and national organisations active in the field of mental health.

Gedeon Richter Plc.



Gyömrői street 19-21
Budapest
H-1103
Hungary
Booth n° 21
www.richter.hu/en-US

Headquartered in Hungary, Gedeon Richter is an innovation-driven specialty pharmaceutical company. It has manufacturing subsidiaries in five countries and markets its products in one hundred countries. With a 1000-strong R&D team the company boasts the biggest pharmaceutical research centre in CEU. CNS drugs are important parts of its portfolio and constitute the focus of its original research. The company's latest achievement is the original atypical antipsychotic compound, cariprazine, already marketed in the US for the treatment of bipolar mania and schizophrenia since March 2016. In 2017 it received marketing authorization in the EU for the treatment of schizophrenia in adult patients.

Genomind



2200 Renaissance Blvd, Suite 100
King of Prussia
19406
USA
Booth n° 5
www.genomind.com

Genomind is a U.S. based personalized medicine company bringing innovation to mental healthcare through genetic testing. Genomind's expert staff is comprised of pioneering researchers and thought leaders in psychiatry and neurology who specialize in pharmacogenetic laboratory testing for psychiatric conditions. Genomind is a CLIA certified and CAP accredited laboratory. Learn more at www.genomind.com.

H. Lundbeck A/S

Ottiliavej 9
Valby
2500
Denmark
Booth n° 27

www.lundbeck.com



Lundbeck – improved treatment and a better life for people living with psychiatric and neurological disorders. A global pharmaceutical company specialized in psychiatric and neurological disorders. For more than 70 years, we have been at the forefront of research in neuroscience with focus on depression, schizophrenia, Parkinson's disease and Alzheimer's disease. www.lundbeck.com

International College of Neuropsychopharmacology (CINP)

CINP Central Office, 60 Nasmyth Ave, East Kilbride
Glasgow
G75 0QR
UK
Booth n° 4A

www.cinp.org



The International College of Neuropsychopharmacology (CINP) is a truly worldwide organisation established over 50 years ago in Zurich, Switzerland. Membership is on an individual basis and we offer members the opportunity to become part of this knowledgeable group of scientists who work at an international level. Holding regular meetings in the form of Thematic Meetings, Regional Meetings, Training, Educational Programmes and the Biennial World Congress, CINP reaches interested researchers all over the world. CINP is dedicated to promoting research and education on a worldwide basis.

Janssen Pharmaceutica NV

Turnhoutsweg 30, B-2340
B-2340
Belgium
Booth n° 14

www.janssen.com/EMEA



About the Janssen Pharmaceutical Companies At the Janssen Pharmaceutical Companies of Johnson & Johnson, we are working to create a world without disease. Transforming lives by finding new and better ways to prevent, intercept, treat and cure disease inspires us. We bring together the best minds and pursue the most promising science. We are Janssen. We collaborate with the world for the health of everyone in it. Learn more at www.janssen.com/EMEA. Follow us at [www.twitter.com/janssenEMEA](https://twitter.com/janssenEMEA).



Karger Publishers

Allschwilerstrasse 10
Basel
4009
Switzerland
Booth n° 20
www.karger.com

KARGER
Medical and Scientific Publishers

Karger Publishers in Basel, Switzerland, is a globally active medical and scientific publishing company. Independent and family-run in the fourth generation by Vice Chairwoman & Publisher Gabriella Karger and Chairman Thomas Karger, the company is dedicated to serving the information needs of the scientific community with publications of high-quality content, covering all fields of medical science. The publication programme comprises 30 new books per year and 105 peer-reviewed journals with a growing number of open-access publications. Karger content is published predominantly in English, with a strong focus on basic and clinical research, and is in general available online. S. Karger AG consists of the publishing company Karger Publishers (est. 1890) and the International Subscription Agency Karger Libri (est. 1960).

Magstim

Spring Gardens
Whitland
Sa34 0HR
UK
Booth n° 12
www.magstim.com

magstim
THE BRAINS BEHIND TMS™

Magstim TMS therapy for depression is a safe, non-invasive, effective treatment option which can be effective when other treatments have failed. Transcranial Magnetic Stimulation (TMS) uses a series of repetitive, brief and highly focused magnetic pulses, to stimulate brain cells. TMS is an effective, non-invasive, outpatient treatment, with very few side effects. 58% of patients with treatment resistant depression respond positively to TMS therapy. More than 37% of patients achieve complete remission. As the Brains Behind TMS™, Magstim are trusted by researchers and clinicians worldwide. We have developed strong partnerships with other leading medical and research companies, and now manufacture and supply a wide range of products for research and clinical applications. Discover Magstim TMS therapy today and start changing lives.

MagVenture A/S

Lucernemarken 15
Farum
DK- 3520
Denmark
Booth n° 24

www.magventure.com



MagVenture A/S Lucernemarken 15 DK- 3520 Farum Denmark Phone: + 45 4499 8444 info@magventure.com www.magventure.com MagVenture is a medical device company specializing in non-invasive magnetic stimulation systems. MagVita TMS Therapy, MagVenture's treatment system for clinical use, is effective and easy to use for psychiatrists wishing to give patients an alternative to antidepressants. It is offered as a one-off purchase with no payment per use. Treatment quality, flexibility, consistency, and patient comfort are key elements in the system which was the first to be CE-marked for treating Major Depressive Disorder in adults and was also FDA cleared in 2015. MagVenture's TMS systems are furthermore used around the world for clinical examination and research in the areas of neurophysiology, neurology, cognitive neuroscience, rehabilitation, and psychiatry. Visit MagVenture at booth 24.

Otsuka / Lundbeck

Framewood Road
Wexham Springs
SL3 6PJ
UK

www.otsuka-europe.com



Otsuka Pharmaceutical Europe Ltd.: innovative, creative and determined to deliver products that will have a positive impact on the lives of people throughout the world.



Pineapple Contracts

Westmead, Aylesford
MAIDSTONE
ME20 6XJ
UK

Booth n° 18

www.pineapplecontracts.com

Pineapple

Pineapple Contracts have been creating furniture for demanding environments for over 40 years. Our carefully designed products help to enhance the aesthetics and safety levels of healthcare environments. Our furniture helps to improve safety in high security psychiatric wards in mental health units, we create solutions for clients from many different areas of care. Our rolling testing programme enables us to keep up to date with all the current British Standards of contract furniture. All furniture ranges are strength and stability tested to the very latest relevant BS EN standards and all fabrics fire retardant to BS 7176:2007 source 5, with Source 7 upholstery and fabrics also available.

RECORDATI S.p.A

Via M. Civitali 1
milano
20148
Italy

Booth n° 21

www.recordati.it



Recordati is a European specialty pharmaceutical group dedicated to partnering, discovering and developing innovative, value-added products in cardiovascular, urological, psychiatric and rare diseases areas.

SEI -Healthcare

16192 Coastal Highway Lewes,
Delaware
19958,
USA

Booth n° 3

www.sei-healthcare.com



SEI Healthcare is a team of experienced pharmaceutical marketers, digital gurus and medical education professionals who have an overwhelming desire to set a new standard of delivery and raise expectations in the healthcare industry. Our mission is to organise the world's medical information and make it universally accessible and useful to doctors through technological innovation. One of our core products known as Med-sims.org is a free tool for healthcare professionals that provides rich simulated patient experiences for medical doctors featuring case-based curriculum of clinical medicine.

Shire International GmbH

Zahlerweg 10

Zug

6301

Switzerland

Booth n° 16

www.shire.com



Shire is a leading global biotechnology company focused on serving people affected by rare diseases and highly specialized conditions. These diseases are often misunderstood, under-diagnosed, and potentially life-threatening. We strive to develop best-in-class products, across core therapeutic areas including Hematology, Immunology, Neuroscience, Ophthalmics, Lysosomal Storage Disorders, Gastrointestinal/Internal Medicine/Endocrine and Hereditary Angioedema; and Oncology. Our employees come to work every day with a shared mission: to develop and deliver breakthrough therapies for the hundreds of millions of people in the world affected by rare diseases and other high-need conditions, and who lack effective therapies to live their lives to the fullest.

Sooma Medical

Kuortaneenkatu 2

Helsinki

00510

Finland

Booth n° 2

www.soomamedical.com



We provide treatment solutions and medical devices to healthcare professionals. Our neurostimulation platform Sooma tDCS brings unparalleled ease of use and patient comfort to the treatment of depression and chronic pain. With our remote patient management software and a novel patient contact interface, we are a world leader in home-based transcranial direct current stimulation. Our aim is to improve the tools available in routine healthcare and currently, we are looking for research collaboration in the treatment of schizophrenia and addictions.



Soterix Medical INC

237 W 35 ST, 1401
New York
10001
USA
Booth n° 1

www.soterixmedical.com



Soterix Medical is the world leader in non-invasive neuromodulation and brain stimulation technology. Leveraging the most advanced scientific understanding, Soterix Medical technology is the forefront of neuromodulation therapy and trials for the treatment of neuropsychiatric disorders. Soterix Medical tDCS-LTE treatment is approved in the European Union for the treatment of Major Depression in adult patients. The tDCS-LTE system is a battery powered medical device that stimulates the brain via electrodes on the scalp. It is a highly promising therapy for Major Depression without the systemic side effects commonly associated with oral antidepressant medications.

Takeda Pharmaceutical Company Limited

3rd floor, 61 Aldwych
London
WC2B 4AE
UK

www.takeda.com



Takeda Pharmaceuticals is a global, R&D-driven pharmaceutical company committed to bringing better health and a brighter future to patients by translating science into life-changing medicines. Takeda focuses its research efforts on oncology, gastroenterology and central nervous system therapeutic areas. It also has specific development programs in specialty cardiovascular diseases and late-stage candidates for vaccines. Takeda conducts R&D both internally and with partners to stay at the leading edge of innovation. More than 30,000 Takeda employees are committed to improving quality of life for patients, working with our partners in healthcare in more than 70 countries.

Wisepress Medical Bookshop

15 Lyon Road
London
SW19 2RL
UK

Booth n° 8

www.wisepress.com



[Wisepress.com](http://www.wisepress.com), Europe's leading conference bookseller, attend around 200 conferences every year. We have an extensive range of books and journals relevant to the themes of this conference available at our booth. We also have a comprehensive range of STM titles available on our online bookshop. Follow us on Twitter @WisepressBooks.

WPA

Psychiatric Hospital 2, ch. du Petit-Bel-Air
Geneva
1225 Chêne-Bourg,
Switzerland
Booth n° 19A

www.wcp-congress.com



The WPA is an association of national psychiatric societies aimed to increase knowledge and skills necessary for work in the field of mental health and the care for the mentally ill. Its member societies are presently 140, spanning 120 different countries and representing more than 200,000 psychiatrists. The WPA organizes the World Congress of Psychiatry every three years. It also organizes international and regional congresses and meetings, and thematic conferences. It has 72 scientific sections, aimed to disseminate information and promote collaborative work in specific domains of psychiatry. It has produced several educational programmes and series of books. It has developed ethical guidelines for psychiatric practice, including the Madrid Declaration (1996). Visit the WPA association Website: www.wpanet.org



WWW.EPA-CONGRESS.ORG 145

[illegible]

NOW AVAILABLE FOR THE MAINTENANCE TREATMENT OF SCHIZOPHRENIA
IN ADULT PATIENTS STABILISED WITH ORAL ARIPIPRAZOLE

New once-monthly Abilify Maintena[®] (aripiprazole) gives your patients protection from relapse*

Recurring relapse in schizophrenia can lead to clinical deterioration and decreased functioning.¹
Abilify Maintena can significantly reduce the risk of relapse during long-term treatment*^{2,3}
and maintain personal and social functioning.⁴

*Superior to placebo and comparable to oral aripiprazole^{2,3}

REFERENCES: 1. Lieberman JA, Perkins D, Belger A, et al. The early stages of schizophrenia: speculations on pathogenesis, pathophysiology, and therapeutic approaches. *Biol Psychiatry*. 2001;50:884-897. 2. Fleischhacker WW, Sanchez R, Perry PP, et al. Aripiprazole once-monthly for the treatment of schizophrenia: a double-blind, randomized, non-inferiority study vs. oral aripiprazole. Poster presented at the 166th Annual Meeting of the American Psychiatric Association; 18-22 May, 2013; San Francisco, CA, USA. 3. Kane JM, Sanchez R, Perry PP, et al. Aripiprazole intramuscular depot as maintenance treatment in patients with schizophrenia: a 52-week, multicenter, randomized, double-blind, placebo-controlled study. *J Clin Psychiatry*. 2012;73(5):61-624. 4. Carson WH, Perry P, Sanchez R, et al. Effects of a long-acting injectable formulation of aripiprazole on secondary efficacy outcomes in maintenance treatment of schizophrenia. Poster presented at the 52nd Annual Meeting of the New Clinical Drug Evaluation Unit (NCDEU); May-June, 2012; Phoenix, AZ, USA.

 400MG
Abilify Maintena[®]
(aripiprazole) prolonged-release suspension for injection

Date of preparation: December 2013 Code: OPEL/1213/MTN/1081

Deeply Vital

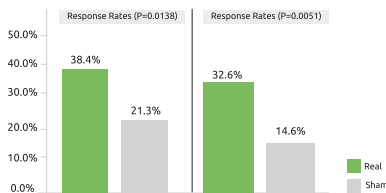


Effective, Non-invasive, Neuromodulation Technique

BrainsWay Multicenter Trials:

MDD

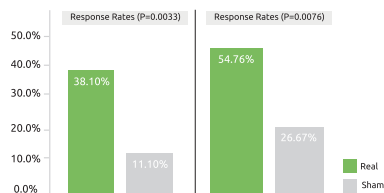
1 in 3 medication-resistant patients (TRD) achieved remission after 5 weeks¹.



* Remission - HDRS-21 Score < 10
Response - improvement of at least 50% from baseline

OCD

1 in 3 patients with inadequate relief from medication/CBT achieved response after 6 weeks.



* Response - Reduction of at least 30% in YBOCS score from baseline
Partial response rate comparison at the 6 week visit, where response is defined as a reduction of at least 20% in YBOCS score from baseline

BRO-AD100-00 V.1

Visit us: **Booth #17 at EPA 2018**
and experience stimulation of your motor cortex

To schedule a hands-on demonstration:
contact@brainsway.com

1. Levkovitz Y, et al. World Psychiatry 2015; 14:64-73



Janssen Sponsored Satellite Symposium at the 26th European Congress of Psychiatry (EPA 2018)

The reality of treatment-resistant depression (TRD) today

Chair and Scientific Committee: Prof. Siegfried Kasper, Austria

Sunday 4 March 2018, 13:15–14:45

Nice Acropolis Convention Centre, Room Hermès, Nice, France

Janssen Sponsored Satellite Symposium at the 26th European Congress of Psychiatry (EPA 2018)

Reducing relapse and mortality in schizophrenia: **myth or reality?**

Scientific Committee: Prof. John M. Kane, USA; Prof. Giuseppe Maina, Italy

Chair: Prof. John M. Kane, USA

Monday 5 March 2018, 13:15–14:45

Nice Acropolis Convention Centre, Room Athena, Nice, France



The European Accreditation Committee in CNS (EACIC) has granted 2 CME credits each to these satellite symposia. To obtain your CME credits, fill out the evaluation form on www.eacic.eu.

With the support of Janssen Pharmaceutical Companies of Johnson & Johnson in EMEA

Janssen Pharmaceutica NV
Turnhoutseweg 30
B-2340 Beerse, Belgium

Date of preparation: February 2018
PHEM/PSY/1217/0002p

janssen  **Neuroscience**
PHARMACEUTICAL COMPANIES OF *Johnson & Johnson*



Satellite Symposium held during the **26th European Congress of Psychiatry**

Nice, France
3-6 March 2018

**Sunday, 4 March,
13:15 - 14:45**

**CALLIOPE Hall,
Nice Acropolis
Convention Centre**

Past, present and future of schizophrenia negative symptoms treatment



GEDEON RICHTER



What does the long-term future look like for your patients with major depressive disorder?



Satellite symposia on the occasion of the 26th European Congress of Psychiatry, with educational financial support provided by H. Lundbeck A/S

Join us for 2 symposia

**Functional recovery from depression:
lots to THINC® about**

Monday 5 March 2018, 13:15–14:45

Hall Hermès, Nice Acropolis Convention Centre

Speakers: Roger McIntyre (Chair), John Harrison and Bernhard Baune

**From conventional antidepressant efficacy
to real-world effectiveness**

Monday 5 March 2018, 18:45–20:15

Hall Hermès, Nice Acropolis Convention Centre

Speakers: Eduard Vieta (Chair), Bernhard Baune and Pratap Chokka

Light refreshments will be provided at 18:15 prior to the symposium



The European Accreditation Committee in
CNS (EACIC) has granted 2 CME credits to
each satellite symposium. To obtain your
CME credits, fill out the evaluation form on
www.eacic.eu.





ANGELINI

EPA 2018, 3-6 MARCH, NICE, FRANCE

SATELLITE SYMPOSIUM

MONDAY, 5TH MARCH 2018, 13:15 – 14:45

Hall Calliope - Level 3

**“Insights into schizophrenia today:
do the available treatment options
meet patients’ and physicians’ needs?”**

INDUSTRY CHAIR: Prof. Andrea Fagiolini

**“PATIENTS’ AND DOCTORS’ NEEDS:
COMMON GOALS FOR A THERAPEUTIC ALLIANCE”**

Prof. Christoph Correll

CURRENT TREATMENT OPTIONS IN LIGHT OF UNMET CLINICAL NEEDS

Prof. Stefan Leucht

**OPTIMIZING PATIENTS’ PHARMACOLOGICAL JOURNEY
IN SCHIZOPHRENIA**

Prof. David Taylor

Join us as we explore together **ADHD in adults...**



RECOGNISING ADHD
IN ADULTS

At: Athéna (Level 2)

SATELLITE SYMPOSIUM

Sunday 4th March 2018 | 13:15-14:45

Is it ADHD? *What to look out for and what to do...*

Welcome and overview David Bull (London, UK)	13:15-13:20	
ADHD in adults Anthony Rostain (Philadelphia, USA)	13:20-13:40	
ADHD - missed or misdiagnosis? What to look out for... Larry Klassen (Manitoba, Canada)	13:40-14:00	
Guidance for treatment of ADHD in adults Philip Asherson (London, UK)	14:00-14:15	
Ask the Experts Panel and delegates Q&A Philip Asherson (London, UK) Martin Katzman (Toronto, Canada) Larry Klassen (Manitoba, Canada) Anthony Rostain (Philadelphia, USA)	14:15-14:40	
Closing comments David Bull (London, UK)	14:40-14:45	

(Lunch boxes will be provided)

At: Exhibition Hall (Situated between booths 22 & 24)

PRODUCT THEATRE

Monday 5th March 2018 | 12:30-13:00

It is ADHD. *Real patient cases and clinical discussion*

Presenter:	Larry Klassen (Manitoba, Canada)	
Discussants:	Martin Katzman (Toronto, Canada) & J. Antoni Ramos-Quiroga (Barcelona, Spain)	
Moderator	David Bull (London, UK)	



This Symposium and Product Theatre are initiated, organised and funded by Shire.

© Shire 2018. All rights reserved. Shire and the Shire logo are registered trademarks of Shire Pharmaceutical Holdings Ireland Limited or its affiliates C-APROM/INT/1231 | Date of preparation: January 2018



EUROPEAN
PSYCHIATRIC
ASSOCIATION



EPA 2019
27th
EUROPEAN
CONGRESS
OF PSYCHIATRY

**PSYCHIATRY IN
TRANSITION**

**TOWARDS
NEW MODELS,
GOALS &
CHALLENGES**

**SAVE THE
DATE**

Warsaw, Poland
6-9 April 2019

www.epa-congress.org
#EPA2019